

WAAS CH <b>78334</b> <b>W04A</b>	APP CRS <b>039°</b>	Rwy Idg TDZE Apt Elev	<b>8001</b> <b>292</b> <b>319</b>
--	------------------------	-----------------------------	---

# RNAV (GPS) RWY 4

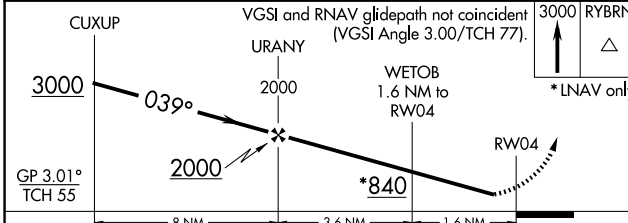
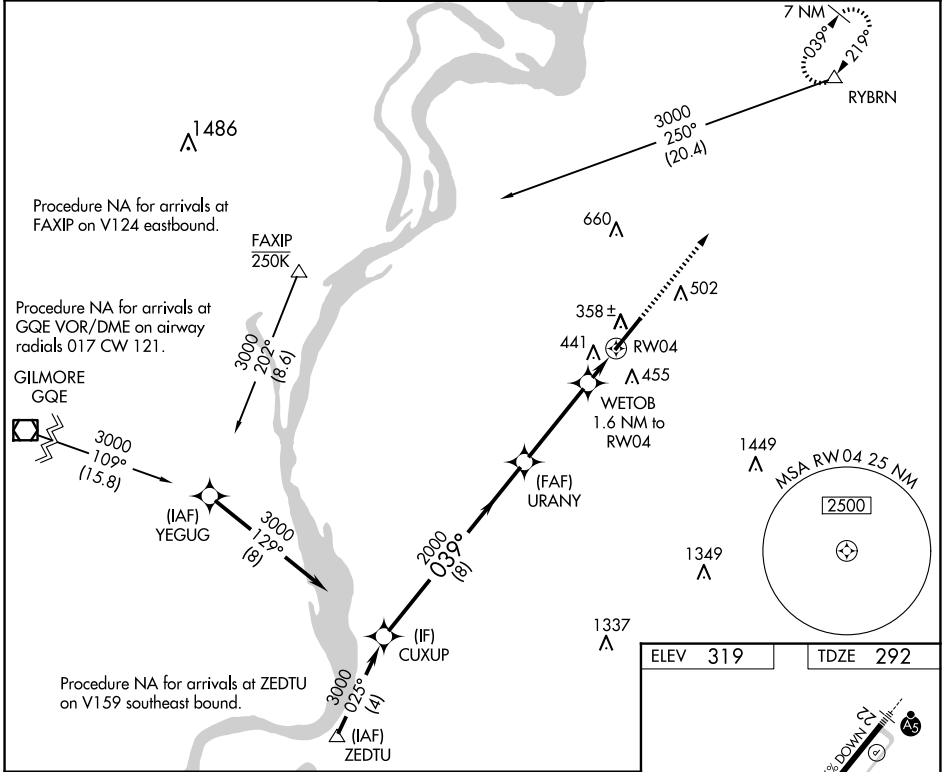
MILLINGTON/MEMPHIS (NQA)

RNP APCH

▼ Rwy 4 helicopter visibility reduction below 3/4 SM NA. For uncompensated Baro-VNAV systems, LNAV/VNAV NA below -15°C or above 54°C.

▲ MISSED APPROACH: Climb to 3000 direct RYBRN and hold.

AWOS-3 <b>118.925</b>	MEMPHIS APP CON <b>119.1 291.6</b> <b>125.8 338.3</b> (176°-355°) (356°-175°)	MILLINGTON TOWER ★ <b>120.25 (CTAF) 0 340.2</b>	GND CON <b>121.375</b>	UNICOM <b>122.95</b>
--------------------------	---	--	---------------------------	-------------------------



ELEV 319	TDZE 292
----------	----------

800 X 150, 0.5% UP, 0.6% DOWN, TWR, RYBRN.

REIL Rwy 22  
REIL Rwy 4  
HIRL Rwy 4-22

CATEGORY	A	B	C	D	E
LPV DA	492-3/4		200 (200-3/4)		
LNAV/VNAV DA	746-1 1/2		454 (500-1 1/2)		
LNAV MDA	700-1	408 (400-1)	700-1 1/4	408 (400-1 1/4)	
CRCLING	800-1 481 (500-1)	820-1 501 (600-1)	920-1 3/4 601 (700-1 3/4)	960-2 1/4 641 (700-2 1/4)	960-2 1/2 641 (700-2 1/2)

SE-1, 15 MAY 2025 to 12 JUN 2025

SE-1, 15 MAY 2025 to 12 JUN 2025