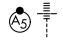


RNAV (GPS) Z RWY 18R

MEMPHIS INTL (MEM)

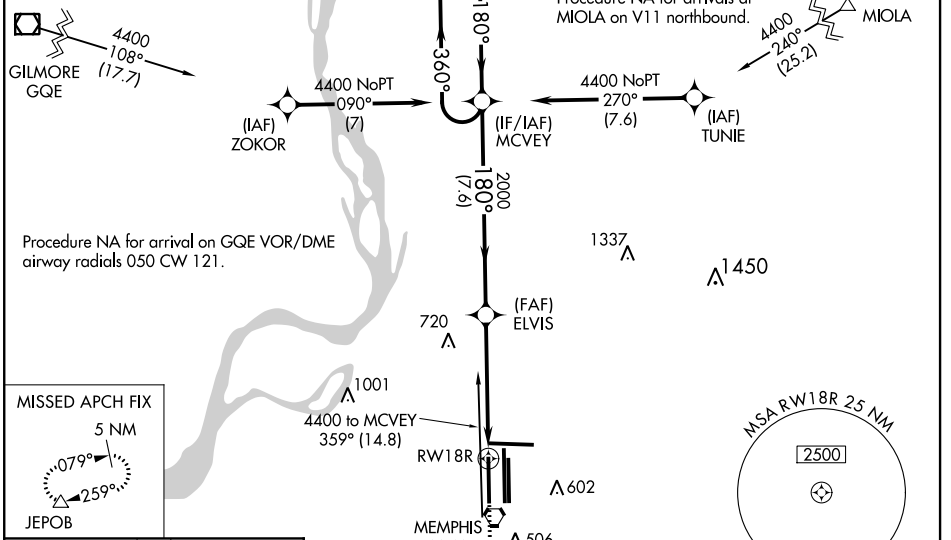
WAAS CH 56606 W18A	APP CRS 180°	Rwy Idg 9320 TDZE 295 Apt Elev 341
---------------------------------	------------------------	--

⚠ For uncompensated Baro-VNAV systems, LNAV/VNAV NA below -15°C (5°F) or above 48°C (118°F). Simultaneous approach authorized. DME/DME RNP-0.3 NA. LNAV procedure NA during simultaneous operations. Use of FD or AP required during simultaneous operations.

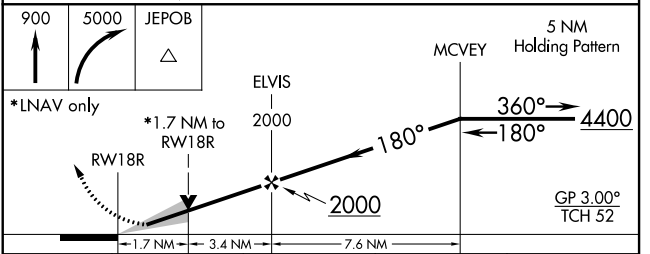
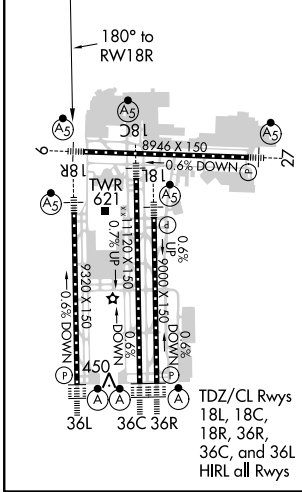
MALSR
 MISSED APPROACH:
Climb to 900 then climbing right turn to 5000 direct to JEPOB and hold.

MEMPHIS APP CON 119.1 291.6 (176°-355°) 125.8 338.3 (356°-175°)	MEMPHIS TOWER (Rwy 9-27) 118.3 257.8 (Rwys 18C-36C, 18L-36R) 119.7 257.8 (Rwy 18R-36L) 128.425 257.8	GND CON (Rwy 9-27) 121.0 379.2 (Rwys 18C-36C, 18L-36R) 121.9 379.2 (Rwy 18R-36L) 121.65 379.2
---	--	---

D-ATIS 127.75	CLNC DEL 125.2	CPDLC
-------------------------	--------------------------	-------



ELEV 341	D	TDZE 295
-----------------	----------	-----------------



CATEGORY	A	B	C	D
LPV DA		495/18	200 (200-1/2)	
LNAV/VNAV DA		874-1 1/2	579 (600-1 1/2)	
LNAV MDA	880/24	585 (600-1/2)	880/50 585 (600-1)	880/60 585 (600-1 1/2)
C CIRCLING	940-1	599 (600-1)	940-1 1/2 599 (600-1 1/2)	1020-2 1/4 679 (700-2 1/4)

SE-1, 24 MAY 2018 to 21 JUN 2018

SE-1, 24 MAY 2018 to 21 JUN 2018