

WAAS CH <b>53307</b> <b>W18B</b>	APP CRS <b>180°</b>	Rwy Idg TDZE Apt Elev	<b>9000</b> <b>301</b> <b>341</b>
--	------------------------	-----------------------------	---

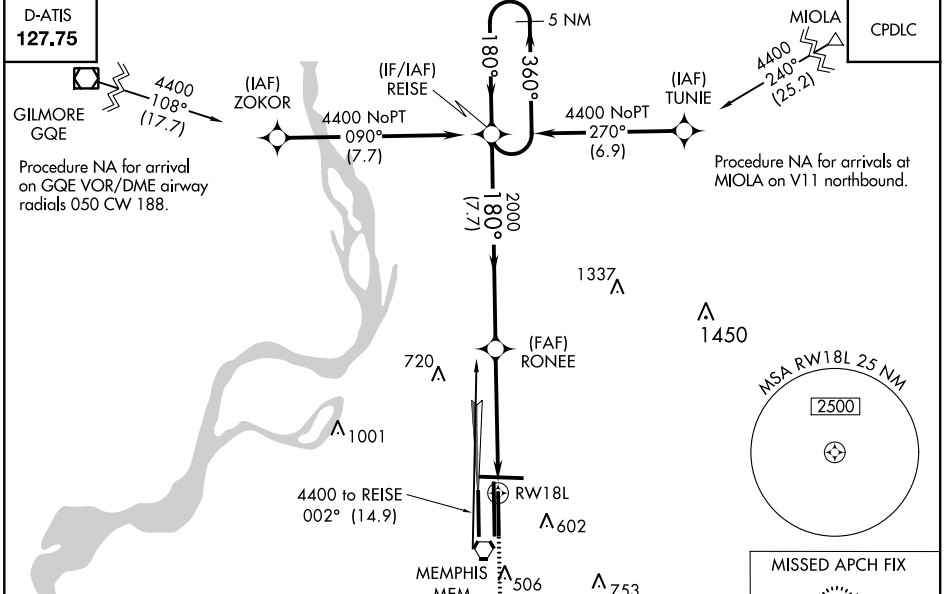
# RNAV (GPS) Z RWY 18L

MEMPHIS INTL (MEM)

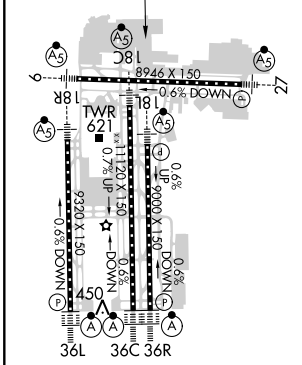
**⚠** For uncompensated Baro-VNAV systems, LNAV/VNAV NA below -15°C (5°F) or above 48°C (118°F). Simultaneous approach authorized.  
**⚠** DME/DME RNP-0.3 NA. LNAV procedure NA during simultaneous operations.  
 Use of FD or AP required during simultaneous operations.  
 For inop ALS, increase LPV all Cats visibility to RVR 5000.

**MALSR**  
  
**MISSED APPROACH:** Climb to 900 then climbing left turn to 5000 direct KEEZE and hold, continue in climb-in-hold to 5000.

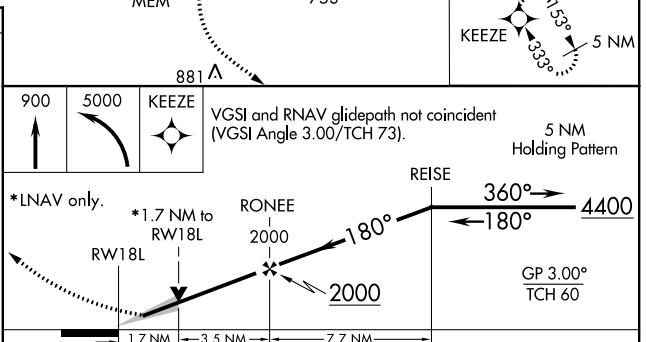
MEMPHIS APP CON <b>119.1 291.6</b> (176°-355°) <b>125.8 338.3</b> (356°-175°)	MEMPHIS TOWER <b>118.3 257.8</b> (Rwy 9-27) <b>119.7 257.8</b> (Rwys 18C-36C, 18L-36R) <b>128.425 257.8</b> (Rwy 18R-36L)	GND CON <b>121.0 379.2</b> (Rwy 9-27) <b>121.9 379.2</b> (Rwys 18C-36C, 18L-36R) <b>121.65 379.2</b> (Rwy 18R-36L)	CLNC DEL <b>125.2</b>
---	--	---	--------------------------



ELEV 341	TDZE 301
----------	----------



TDZ/CL Rwys 18L, 18C, 18R, 36R, 36C, and 36L  
 HIRL all Rwys



CATEGORY	A	B	C	D
LPV DA	557/18 256 (300-1/2)			
LNAV/VNAV DA	874-1 573 (600-1 1/2)			
LNAV MDA	880/24	579 (600-1/2)	880/50 579 (600-1)	880/60 579 (600-1 1/4)
<b>C</b> CIRCLING	940-1	599 (600-1)	940-1 1/2 599 (600-1 1/2)	1020-2 1/4 679 (700-2 1/4)

SE-1, 24 MAY 2018 to 21 JUN 2018

SE-1, 24 MAY 2018 to 21 JUN 2018