

LOC/DME I-TSE 110.5 Chan 42	APP CRS 360°	Rwy Idg 10715 TDZE 341 Apt Elev 341
---	------------------------	--

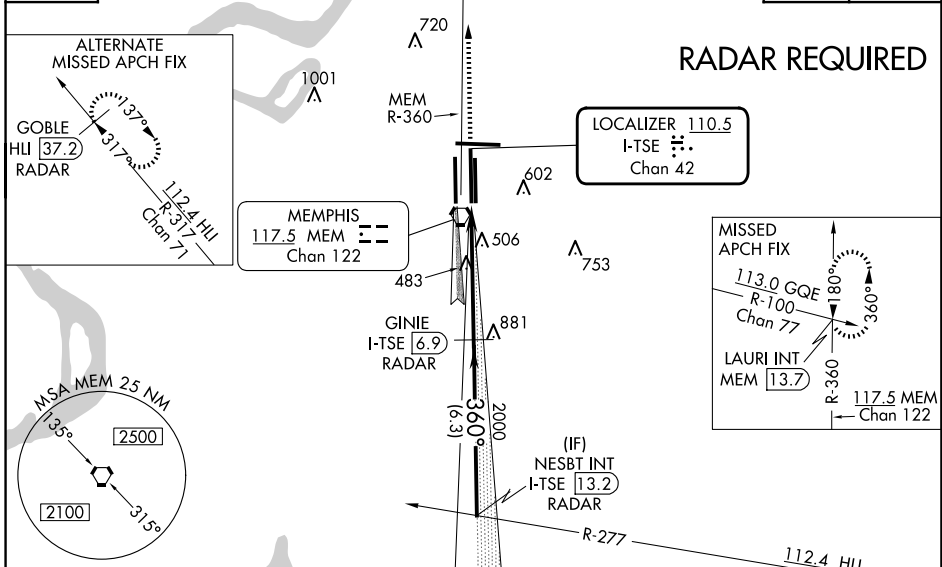
ILS RWY 36C (CAT II & III)

MEMPHIS INTL (MEM)

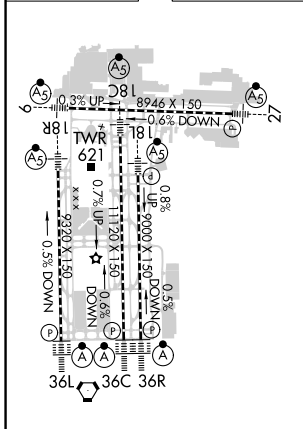
	DME or RADAR required. Simultaneous approach authorized with Rwy 36L.	ALSF-2 	MISSED APPROACH: Climb to 3000 via MEM VORTAC R-360 to LAURI INT/MEM 13.7 DME and hold.
--	--	------------	---

MEMPHIS APP CON 119.1 291.6 (176°-355°) 125.8 338.3 (356°-175°)	MEMPHIS TOWER (Rwy 9-27) 118.3 257.8 (Rwys 18C-36C, 18L-36R) 119.7 257.8 (Rwy 18R-36L) 128.425 257.8	GND CON (Rwy 9-27) 121.0 379.2 (Rwys 18C-36C, 18L-36R) 121.9 379.2 (Rwy 18R-36L) 121.65 379.2
---	--	---

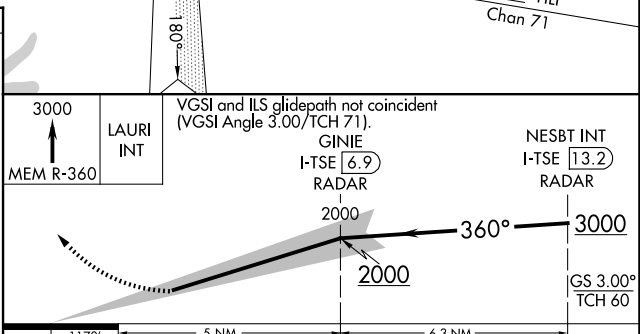
D-ATIS 127.75	1337 Δ	Δ 1450	CINC DEL 125.2	CPDLC
-------------------------	---------------	---------------	--------------------------	-------



ELEV 341	D	TDZE 341
-----------------	----------	-----------------



TDZ/CL Rwys 18L, 18C, 18R, 36R, 36C, and 36L
HIRL all Rwys



CATEGORY	A	B	C	D
S-ILS 36C	CAT II RA 118/12 100 DA 441			
S-ILS 36C	CAT IIIa		RVR 07	
S-ILS 36C	CAT IIIb		RVR 03	
S-ILS 36C	CAT IIIc		NA	

CATEGORY II & III ILS - SPECIAL AIRCREW & AIRCRAFT CERTIFICATION REQUIRED

SE-1, 07 AUG 2025 to 04 SEP 2025

SE-1, 07 AUG 2025 to 04 SEP 2025