

LOC/DME I-MYO 111.35 Chan 50 (Y)	APP CRS 360°	Rwy ldg TDZE 335 Apt Elev 341	9000 335 341
---	------------------------	---	---

ILS or LOC RWY 36R

MEMPHIS INTL (MEM)

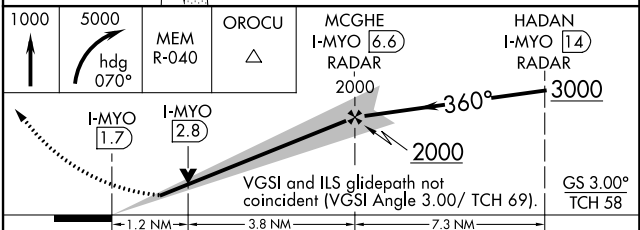
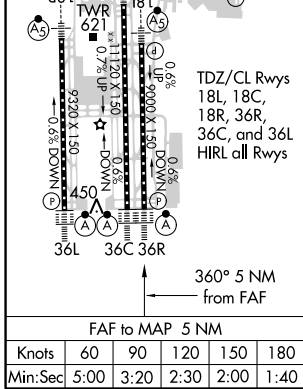
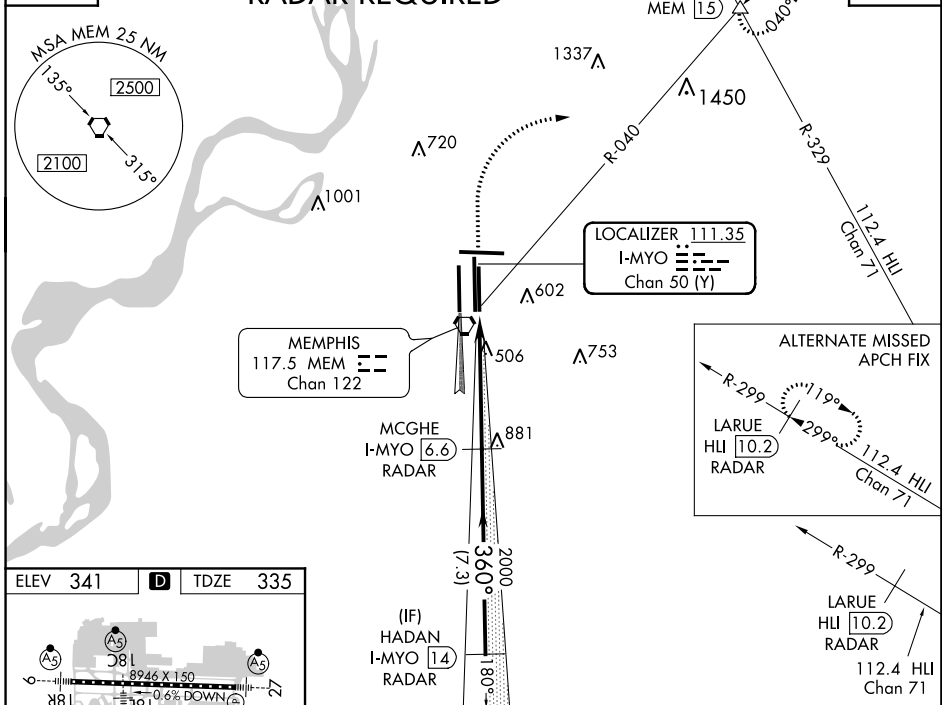
▲ For inoperative ALSF, increase S-ILS 36R Cat E visibility to RVR 4000 and S-LOC 36R Cat E visibility to 1½. Simultaneous approach authorized with Rwy 36L. DME or Radar required.

▲ ALSF-2 MISSED APPROACH: Climb to 1000 then climbing right turn to 5000 via heading 070° and MEM VORTAC R-040 to OROCU INT/MEM 15 DME and hold, continue climb-in-hold to 5000.

MEMPHIS APP CON 119.1 291.6 (176°-355°) 125.8 338.3 (356°-175°)	MEMPHIS TOWER (Rwy 9-27) 118.3 257.8 (Rwys 18C-36C, 18L-36R) 119.7 257.8 (Rwy 18R-36L) 128.425 257.8	GND CON (Rwy 9-27) 121.0 379.2 (Rwys 18C-36C, 18L-36R) 121.9 379.2 (Rwy 18R-36L) 121.65 379.2	CLNC DEL 125.2
---	--	---	--------------------------

D-ATIS **127.75** CPDLC

RADAR REQUIRED



CATEGORY	A	B	C	D	E
S-ILS 36R	535/18 200 (200-½)		535/24 200 (200-½)		
S-LOC 36R	760/24	425 (500-½)	760/40	425 (500-¾)	760/50 425 (500-1)
CIRCLING	940-1	599 (600-1)	940-1½ 599 (600-1½)	940-2 599 (600-2)	1120-2¾ 779 (800-2¾)

SE-1, 24 MAY 2018 to 21 JUN 2018

SE-1, 24 MAY 2018 to 21 JUN 2018