

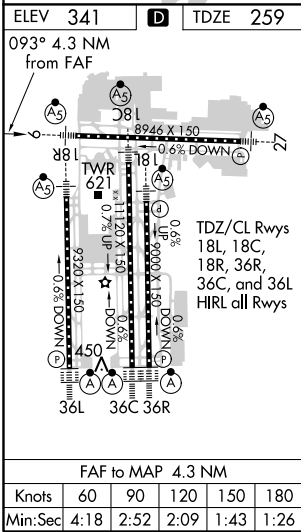
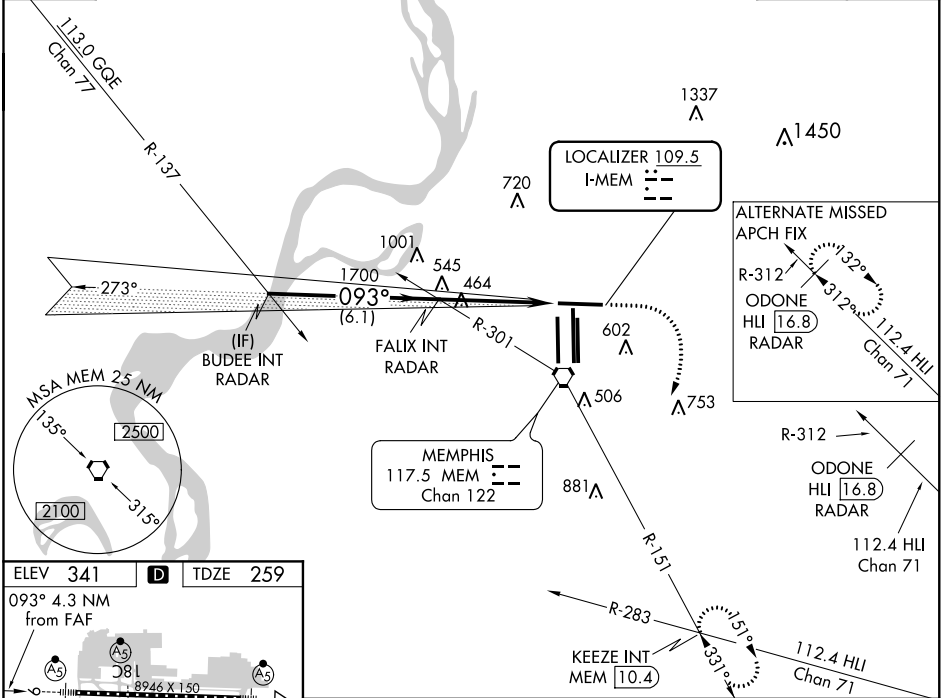
LOC I-MEM	APP CRS	Rwy Idg	8946
109.5	093°	TDZE	259
		Apt Elev	341

ILS or LOC RWY 9

MEMPHIS INTL (MEM)

<p>▼ For inop ALS, increase S-ILS 9 Cat E visibility to RVR 4000 and S-LOC 9 Cat E visibility to 1¾ SM.</p>	MALSR	MISSED APPROACH: Climb to 1000 then climbing right turn to 5000 on MEM R-151 to KEEZE INT/MEM 10.4 DME and hold, continue climb-in-hold to 5000.	
	MEMPHIS APP CON	MEMPHIS TOWER	GND CON
	119.1 291.6 (176°-355°) 125.8 338.3 (356°-175°)	(Rwy 9-27) 118.3 257.8 (Rwys 18C-36C, 18L-36R) 119.7 257.8 (Rwy 18R-36L) 128.425 257.8	(Rwy 9-27) 121.0 379.2 (Rwys 18C-36C, 18L-36R) 121.9 379.2 (Rwy 18R-36L) 121.65 379.2

D-ATIS	127.75	RADAR REQUIRED	CLNC DEL	125.2	CPDLC
--------	---------------	-----------------------	----------	--------------	-------



BUDEE INT RADAR	FALIX INT RADAR	1000	5000	MEM R-151	KEEZE INT
-----------------	-----------------	------	------	-----------	-----------

GS 3.00° TCH 52

2000 — 093° — 1700

6.1 NM — 4.3 NM

CATEGORY	A	B	C	D	E
S-ILS 9	466/24 207 (200-½)				
S-LOC 9	720/24	461 (400-½)	720/50	461 (400-1)	720/60 461 (400-1¼)
C CIRCLING	940-1	599 (600-1)	940-1½	1020-2¼	1140-2¾ 799 (800-2¾)

SE-1, 24 MAY 2018 to 21 JUN 2018

SE-1, 24 MAY 2018 to 21 JUN 2018