

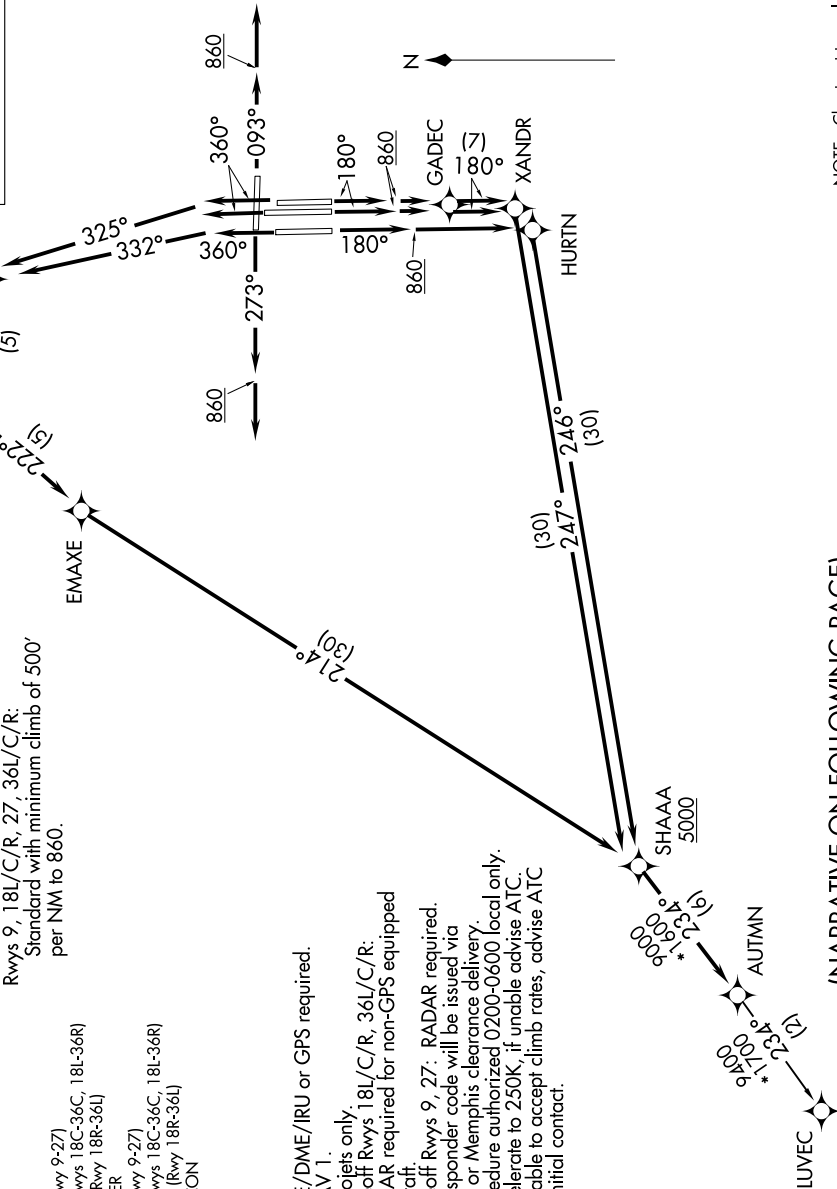
AUTMN FOUR DEPARTURE (RNAV)

**TOP ALTITUDE:
5000**

TAKEOFF MINIMUMS:
Rwys 9, 18L/C/R, 27, 36L/C/R:
Standard with minimum climb of 500'
per NM to 860.

D-ATIS
127.75
CLNC DEL
125.2
CPDIC
GND CON
121.0 379.2 (Rwy 9-27)
121.9 379.2 (Rwys 18C-36C, 18L-36R)
121.65 379.2 (Rwy 18R-36L)
MEMPHIS TOWER
118.3 257.8 (Rwy 9-27)
119.7 257.8 (Rwys 18C-36C, 18L-36R)
128.425 257.8 (Rwy 18R-36L)
MEMPHIS DEP CON
124.65 284.7

NOTE: DME/DME/IRU or GPS required.
NOTE: RNAV 1
NOTE: Turbojets only.
NOTE: Takeoff Rwys 18L/C/R, 36L/C/R:
RADAR required for non-GPS equipped aircraft.
NOTE: Takeoff Rwys 9, 27: RADAR required.
NOTE: Transponder code will be issued via PDC or Memphis clearance delivery.
NOTE: Procedure authorized 0200-0600 local only.
NOTE: Accelerate to 250K, if unable advise ATC.
NOTE: If unable to accept climb rates, advise ATC on initial contact.



NOTE: Chart not to scale.

(NARRATIVE ON FOLLOWING PAGE)

AUTMN FOUR DEPARTURE (RNAV)