

MARVELL SIX ARRIVAL

SE-1, 11 OCT 2018 to 08 NOV 2018

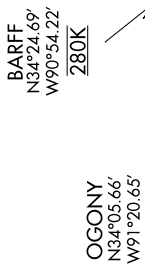
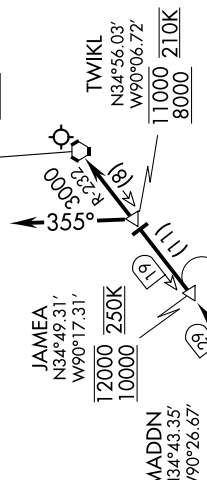
(NARRATIVE ON FOLLOWING PAGE)

MEMPHIS APP CON
119.1 291.6 (176°-355°)
125.8 338.3 (356°-175°)
D-AIIS 127.75

- NOTE: DME and radar required.
- NOTE: Procedure not available for RNAV capable Turbojets.
- NOTE: RNAV capable Turbojets must file the HOBKR RNAV STAR.
- NOTE: Maintain last assigned altitude until cleared to "descend via the MARVELL SIX," then comply with altitude restrictions as published.

MARVELL
109.6 UJM
Chan 33
N34°34.50'-W90°40.46'

MEMPHIS
117.5 MEM
Chan 122
N35°00.91'
W89°58.99'



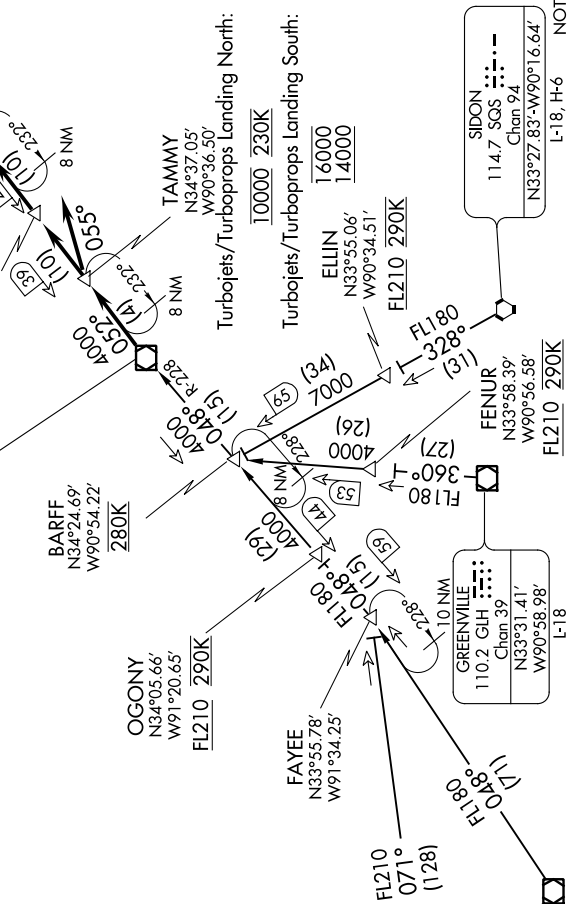
TEXARKANA
116.3 TKX
Chan 110
N33°30.83'-W92°04.39'

EL DORADO
115.5 ELD
Chan 102
N33°15.37'-W92°44.64'

GREENVILLE
110.2 GH
Chan 39
N33°31.41'
W90°58.98'

FENIUR
N33°58.39'
W90°56.58'

SIDON
114.7 SGS
Chan 94
N33°27.83'-W90°16.64'



NOTE: Chart not to scale.

SE-1, 11 OCT 2018 to 08 NOV 2018