

WAAS CH 56527 W06A	APP CRS 059°	Rwy Idg 4999 TDZE 420 Apt Elev 428
--	------------------------	---

RNAV (GPS) RWY 6

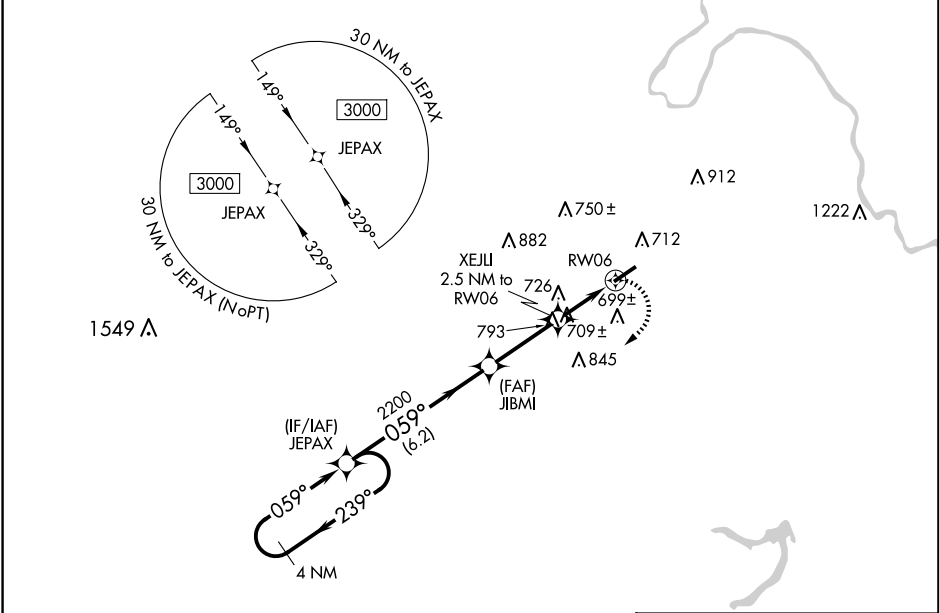
MUHLENBERG COUNTY (M21)

RNP APCH - GPS.

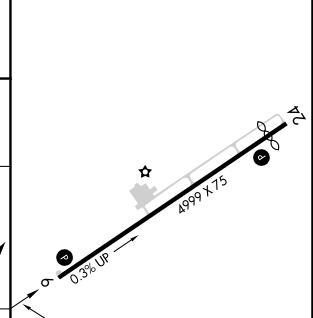
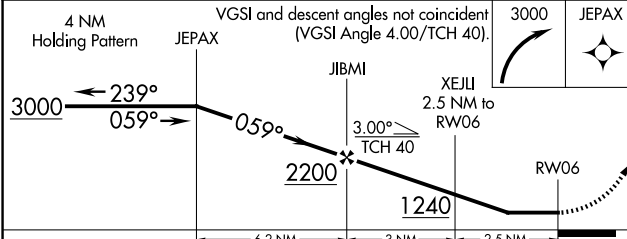
▽ When local altimeter setting not received, use Owensboro altimeter setting and increase all MDAs 80 feet and LP visibility Cat C/D $\frac{1}{4}$, LNAV visibility Cat B/C/D $\frac{1}{4}$, and Circling visibility Cat B/C/D $\frac{1}{4}$. Rwy 6, helicopter visibility reduction below $\frac{3}{4}$ SM NA. Circling Rwy 24 NA at night.

MISSED APPROACH:
Climbing right turn to 3000 direct JEPAX and hold.

AWOS-3 120.45	CAMPBELL APP CON * 118.1 269.525	UNICOM 123.0 (CTAF) 0
-------------------------	--	---------------------------------



ELEV 428	D	TDZE 420
----------	----------	----------



CATEGORY	A	B	C	D
LP MDA	960-1	540 (600-1)	960-1½	540 (600-1½)
LNAV MDA	1100-1	680 (700-1)	1100-1⅞	680 (700-1⅞)
C CIRCLING	1100-1	672 (700-1)	1180-2¼ 752 (800-2¼)	1200-2½ 772 (800-2½)

MIRL Rwy 6-24 0
REIL Rws 6 and 24 0

SE-1, 15 MAY 2025 to 12 JUN 2025

SE-1, 15 MAY 2025 to 12 JUN 2025