

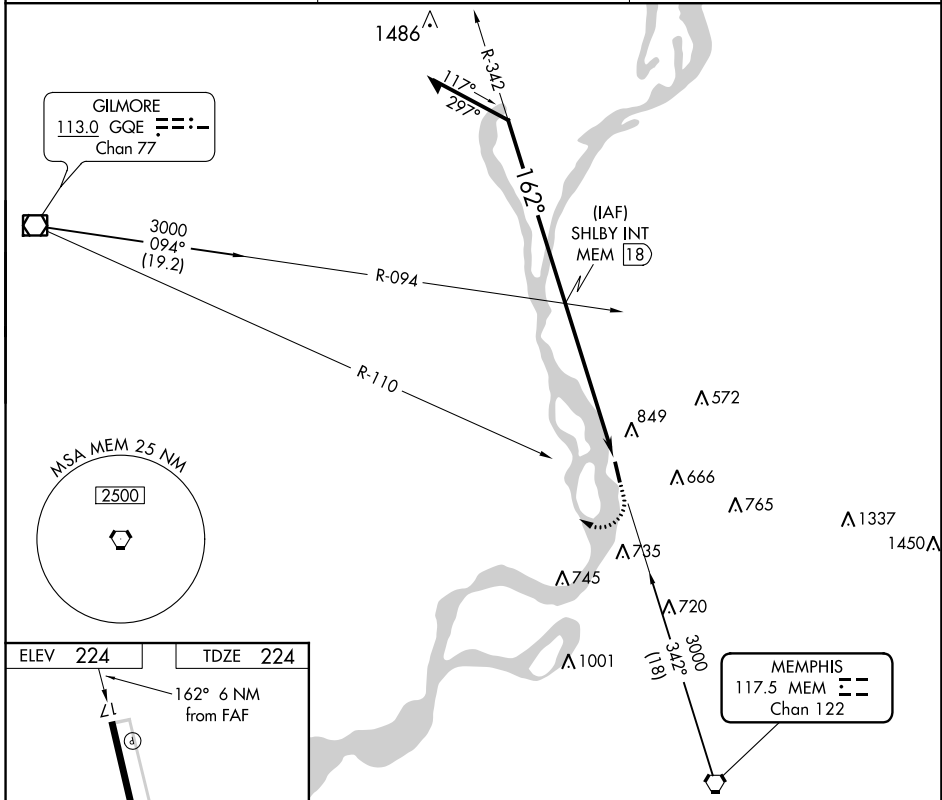
VORTAC MEM <b>117.5</b> Chan <b>122</b>	APP CRS <b>162°</b>	Rwy Idg <b>3800</b> TDZE <b>224</b> Apt Elev <b>224</b>
---	------------------------	---

**VOR RWY 17**  
MEMPHIS/GENERAL DEWITT SPAIN (M01)

▼ Use Memphis Intl altimeter setting.  
▲ NA Visibility reduction by helicopters NA.

MISSED APPROACH: Climb to 1500 then climbing right turn to 2500 via GQE R-110 to GQE VOR/DME.

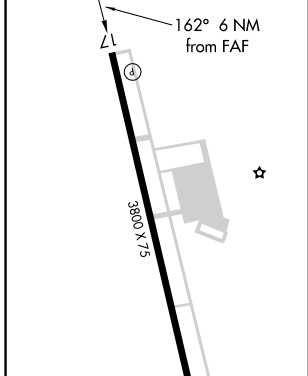
AWOS-A <b>122.7</b>	MEMPHIS APP CON <b>119.1 291.6</b>	UNICOM <b>122.7 (CTAF)</b>
------------------------	---------------------------------------	-------------------------------



SE-1, 24 MAY 2018 to 21 JUN 2018

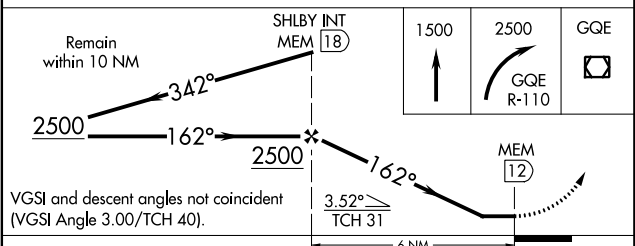
SE-1, 24 MAY 2018 to 21 JUN 2018

ELEV <b>224</b>	TDZE <b>224</b>
-----------------	-----------------



MIRL Rwy 17-35  
REIL Rwys 17 and 35

FAF to MAP 6 NM					
Knots	60	90	120	150	180
Min:Sec	6:00	4:00	3:00	2:24	2:00



CATEGORY	A	B	C	D
S-17	1200-1¼ 976 (1000-1¼)	1200-1½ 976 (1000-1½)	1200-3 976 (1000-3)	NA
CIRCLING	1240-1¼ 1016 (1100-1¼)	1240-1½ 1016 (1100-1½)	1240-3 1016 (1100-3)	NA