

(LUGOH.LUGOH2) 17117
LUGOH TWO ARRIVAL

AL-253 (FAA)

MEMPHIS INTL (MEM)
 MEMPHIS, TENNESSEE

SE-1, '01 MAR 2018 to 29 MAR 2018

MEMPHIS APP CON
 125.8 338.3
 MEMPHIS INTL D-ATIS
 127.75

MEMPHIS
 117.5 MEM
 Chan 122

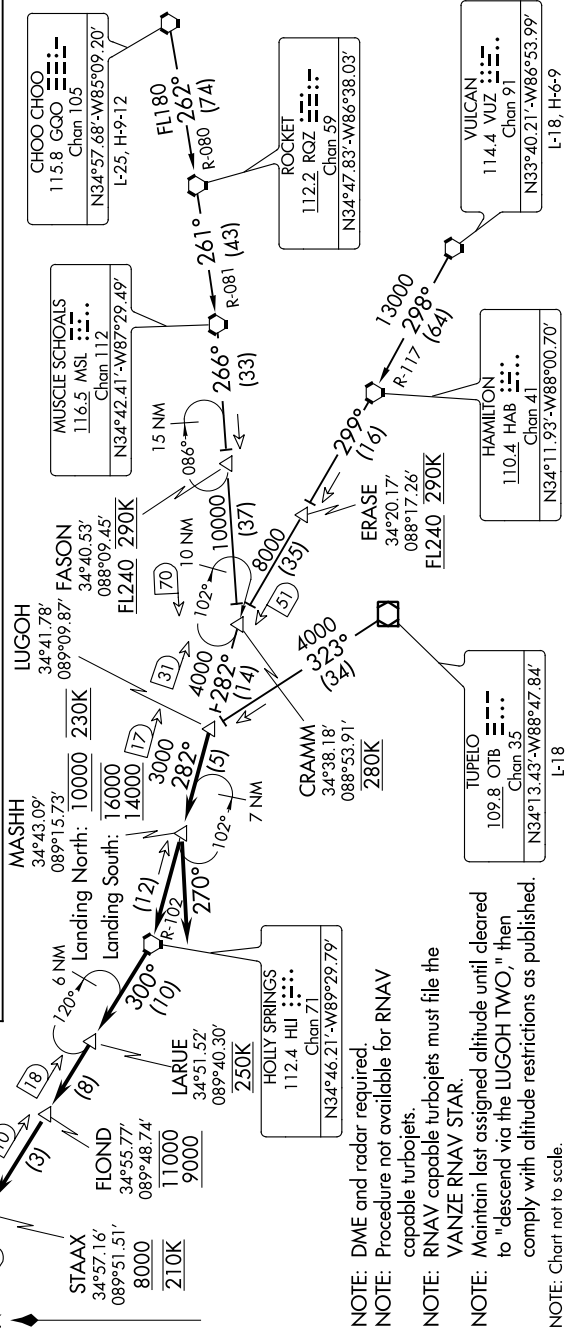
MEMPHIS INTL D-ATIS
 127.75

MEMPHIS, TENNESSEE
 MEMPHIS INTL (MEM)

LUGOH TWO ARRIVAL
 (LUGOH.LUGOH2) 29MAY14

MEMPHIS, TENNESSEE
 MEMPHIS INTL (MEM)

CHOO CHOO TRANSITION (GQO.LUGOH2): From over GQO VORTAC on GQO R-262 and RQZ R-080 to RQZ VORTAC, then on RQZ R-261 and MSL R-081 to MSL VORTAC, then on MSL R-266 to CRAMM, then on HLI R-102 to LUGOH, thence...
TUPELO TRANSITION (OTB.LUGOH2): From over OTB VOR/DME on OTB R-323 to LUGOH, thence...
VULCAN TRANSITION (VUZ.LUGOH2): From over VUZ VORTAC on VUZ R-298 and HAB R-117 to HAB VORTAC, then on HAB R-299 to CRAMM, then on HLI R-102 to LUGOH, thence...
LANDING NORTH: From over LUGOH/HLI 17 DME on HLI R-102 to cross MASHH/HLI 12 DME at 10000 and 230K, then on heading 270°, expect radar vectors to final approach course.
LANDING SOUTH: From over LUGOH/HLI 17 DME on HLI R-102 to cross MASHH/HLI 12 DME at or above 14000 and at or below 16000, then on HLI R-102 to HJ VORTAC, then on MEM R-120 to cross LARJUE/MEM 18 DME at 250K, then on MEM R-120 to cross FLOND/MEM 10 DME at or above 9000 and at or below 11000, then on MEM R-120 to cross STAAX/MEM 7 DME at or above 8000 and at 210K, then on heading 360°, expect radar vectors to final approach course.



- NOTE: DME and radar required.
- NOTE: Procedure not available for RNAV capable turbojets.
- NOTE: RNAV capable turbojets must file the VANZE RNAV STAR.
- NOTE: Maintain last assigned altitude until cleared to "descend via the LUGOH TWO," then comply with altitude restrictions as published.
- NOTE: Chart not to scale.

SE-1, '01 MAR 2018 to 29 MAR 2018