

WAAS CH <b>63233</b> <b>W35A</b>	APP CRS <b>359°</b>	Rwy Idg TDZE Apt Elev	<b>5010</b> <b>990</b> <b>1010</b>
--	------------------------	-----------------------------	--

# RNAV (GPS) RWY 35

RUSSELL COUNTY (K24)

**▼** For uncompensated Baro-VNAV systems, LNAV/VNAV NA below -17°C (2°F) or above 54°C (130°F). DME/DME RNP-0.3 NA. Baro-VNAV and VDP NA when using Wayne County altimeter setting. When local altimeter setting not received, use Wayne County altimeter setting and increase all DA 42 feet and all MDA 60 feet. Increase LPV all Cats visibility ¼ mile and LNAV/VNAV all Cats visibility ⅜ mile and Circling Cat C/D visibility ¼ mile. Helicopter visibility reduction below ⅜ mile NA.

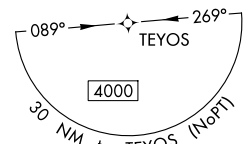
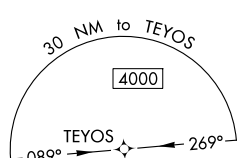
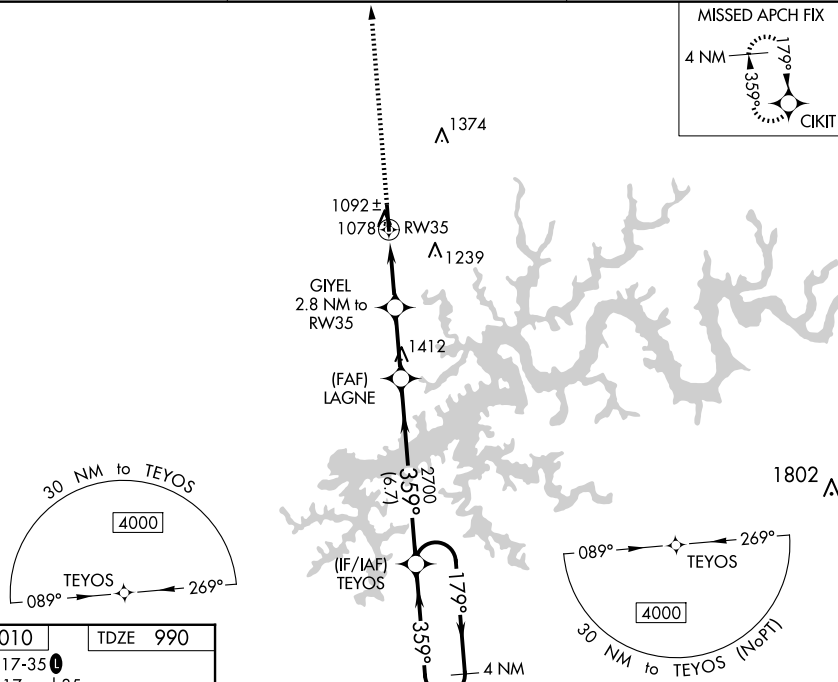
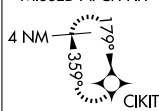
**MISSED APPROACH:**  
Climb to 4000 direct CIKIT and hold.

AWOS-3  
**119.6**

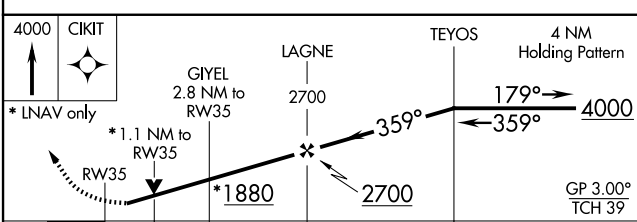
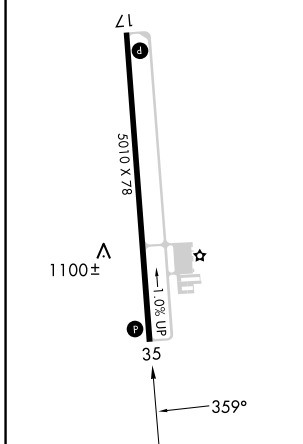
INDIANAPOLIS CENTER  
**124.625 371.925**

UNICOM  
**123.0 (CTAF)**

MISSED APCH FIX



ELEV 1010 TDZE 990  
MIRL Rwy 17-35  
REIL Rws 17 and 35



CATEGORY	A	B	C	D
LPV DA		1240-7/8	250 (300-7/8)	
LNAV/VNAV DA		1285-1 1/8	295 (300-1 1/8)	
LNAV MDA		1360-1	370 (400-1)	
<b>C</b> CIRCLING	1540-1 530 (600-1)	1620-1 610 (700-1)	1700-2 690 (700-2)	1700-2 1/4 690 (700-2 1/4)

SE-1, 15 MAY 2025 to 12 JUN 2025

SE-1, 15 MAY 2025 to 12 JUN 2025