

WAAS CH 78433 W17A	APP CRS 179°	Rwy Idg TDZE Apt Elev	5010 1010 1010
--	------------------------	-----------------------------	---

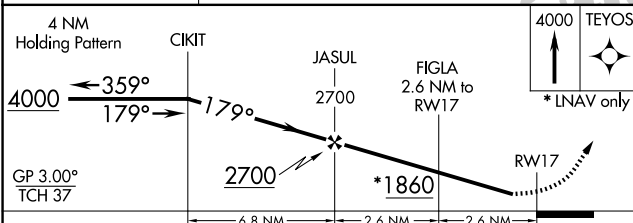
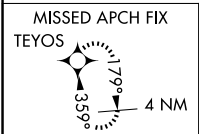
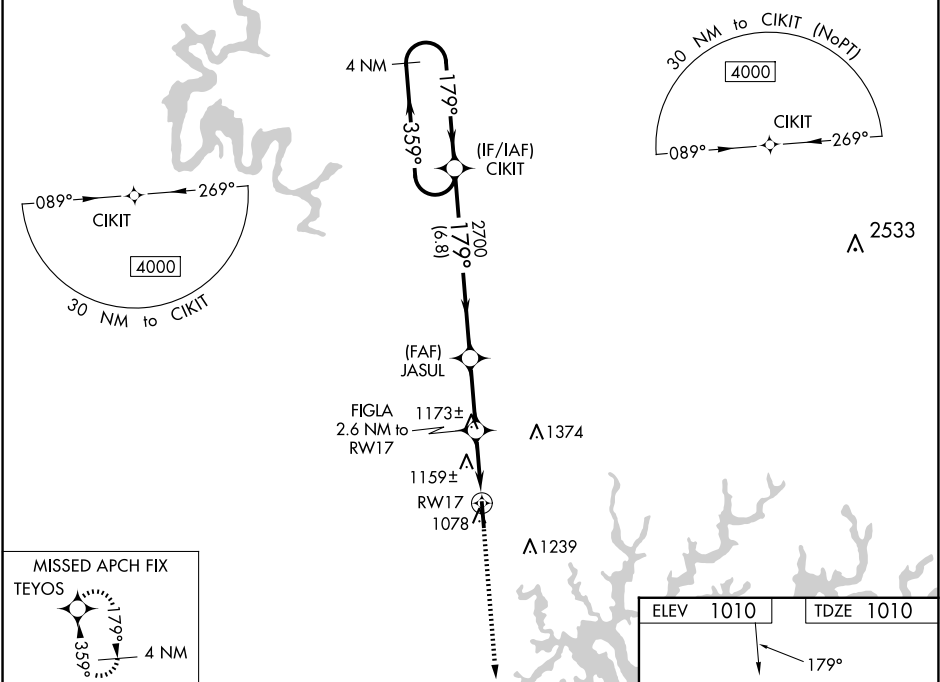
RNAV (GPS) RWY 17

RUSSELL COUNTY (K24)

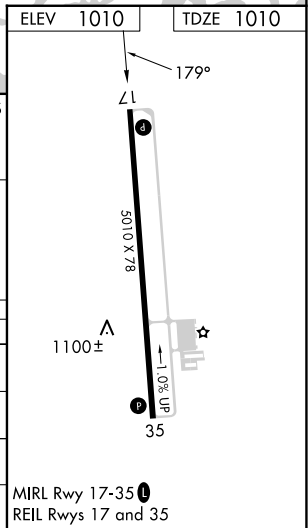
▼ Baro-VNAV NA when using Wayne County altimeter setting. For uncompensated Baro-VNAV systems, LNAV/VNAV NA below -17°C (2°F) or above 54°C (130°F). When local altimeter setting not received, use Wayne County altimeter setting increase all DA 42 feet and increase all MDA 60 feet; increase LPV all Cats 1/8 mile; LNAV/VNAV all Cats 1/4 mile and LNAV and Circling Cats C/D visibility 1/4 mile. DME/DME RNP-0.3 NA. Helicopter visibility reduction below 3/4 SM NA.

MISSED APPROACH:
Climb to 4000 direct TEYOS and hold.

AWOS-3 119.6	INDIANAPOLIS CENTER 124.625 371.925	UNICOM 123.0 (CTAF) 0
------------------------	---	---------------------------------



CATEGORY	A	B	C	D
LPV DA		1346-1 ¹ / ₈	336 (400-1 ¹ / ₈)	
LNAV/VNAV DA		1424-1 ³ / ₈	414 (500-1 ³ / ₈)	
LNAV MDA	1420-1	410 (500-1)	1420-1 ¹ / ₈	410 (500-1 ¹ / ₈)
C CIRCLING	1540-1 530 (600-1)	1620-1 610 (700-1)	1700-2 690 (700-2)	1700-2 ¹ / ₄ 690 (700-2 ¹ / ₄)



SE-1, 15 MAY 2025 to 12 JUN 2025

SE-1, 15 MAY 2025 to 12 JUN 2025