

WAAS CH <b>78325</b> <b>W02A</b>	APP CRS <b>018°</b>	Rwy Idg TDZE Apt Elev	<b>6001</b> <b>484</b> <b>501</b>
--	------------------------	-----------------------------	---

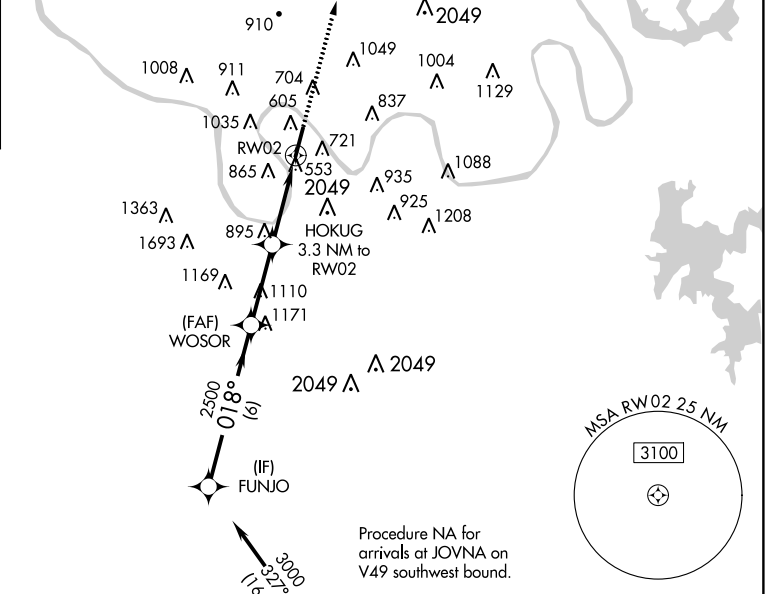
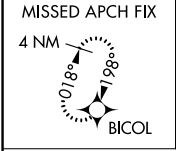
# RNAV (GPS) RWY 2

JOHN C TUNE (JWN)

**NA** For uncompensated Baro-VNAV systems, LNAV/VNAV NA below -15°C (5°F) or above 54°C (130°F). Circling NA E of Rwy 2-20. Baro-VNAV and VDP NA when using Nashville Intl altimeter setting. DME/DME RNP-0.3 NA. When local altimeter setting not received, use Nashville Intl altimeter setting and increase all DAs 39 feet and all MDAs 40 feet; increase LPV visibility all Cats ½ SM, LNAV visibility Cat B ¼ SM.

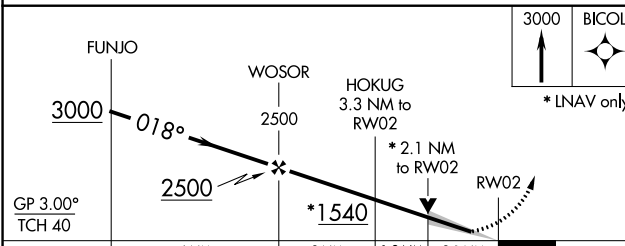
**MISSED APPROACH:**  
Climb to 3000 direct BICOL and hold.

AWOS-3 <b>127.075</b>	NASHVILLE APP CON <b>119.35 372.0</b>	CLNC DEL <b>124.55</b>	UNICOM <b>122.7 (CTAF)</b>
--------------------------	--	---------------------------	-------------------------------

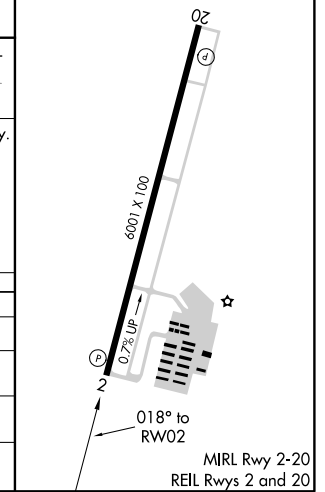


Procedure NA for arrivals at JOVNA on V49 southwest bound.

ELEV 501	<b>D</b>	TDZE 484
----------	----------	----------



CATEGORY	A	B	C	D
LPV DA		734-7/8	250 (300-7/8)	
LNAV/VNAV DA		1079-2 1/2	595 (600-2 1/2)	
LNAV MDA	1160-1	676 (700-1)	1160-2	676 (700-2)
<b>C</b> CIRCLING	1200-1	699 (700-1)	1340-2 3/4	839 (900-2 3/4)



SE-1, 19 JUL 2018 to 16 AUG 2018

SE-1, 19 JUL 2018 to 16 AUG 2018