

WAAS CH <b>45926</b> <b>W03A</b>	APP CRS <b>027°</b>	Rwy Idg TDZE Apt Elev	<b>5003</b> <b>530</b> <b>537</b>
--	------------------------	-----------------------------	---

# RNAV (GPS) RWY 3

OHIO COUNTY (JQD)

RNP APCH - GPS.

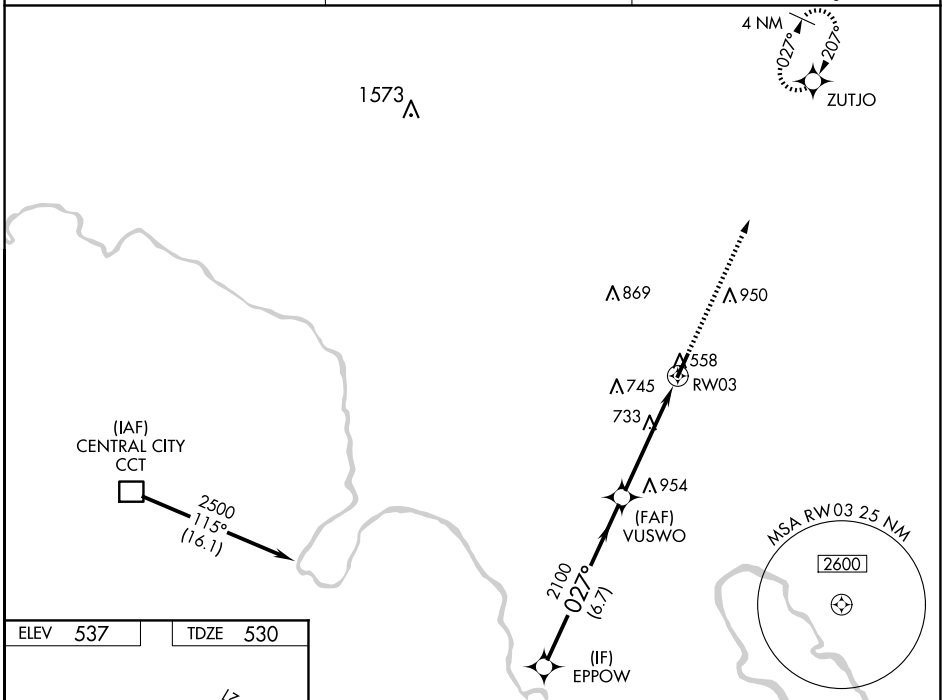
**⚠** Baro-VNAV and VDP NA when using Owensboro altimeter setting. For uncompensated Baro-VNAV systems, LNAV/VNAV NA below -16°C or above 54°C. When local altimeter setting not received, use Owensboro altimeter setting and increase LPV and LNAV/VNAV DA to 851 feet. Increase all MDA 80 feet and LNAV Cat C visibility  $\frac{3}{8}$  SM and Circling Cat C visibility  $\frac{1}{4}$  SM. Circling Rwy 21 NA at night. Rwy 3 helicopter visibility reduction below  $\frac{3}{4}$  SM NA.

**MISSED APPROACH:**  
Climb to 2500 direct ZUTJO and hold.

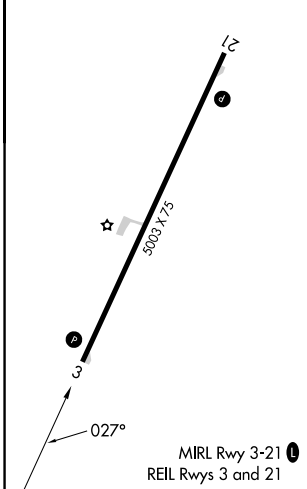
AWOS-3PT  
**132.1**

EVANSVILLE APP CON ★  
**124.025 290.9**

UNICOM  
**122.8 (CTAF) 0**



ELEV 537	TDZE 530
----------	----------



CATEGORY	A	B	C	D
LPV DA		780-1 250 (300-1)		NA
LNAV/VNAV DA		780-1 250 (300-1)		NA
LNAV MDA	1040-1	510 (600-1)	1040-1 $\frac{3}{8}$ 510 (600-1 $\frac{3}{8}$ )	NA
<b>C</b> CIRCLING	1040-1 503 (600-1)	1100-1 563 (600-1)	1300-2 $\frac{1}{4}$ 763 (800-2 $\frac{1}{4}$ )	NA

SE-1, 15 MAY 2025 to 12 JUN 2025

SE-1, 15 MAY 2025 to 12 JUN 2025