

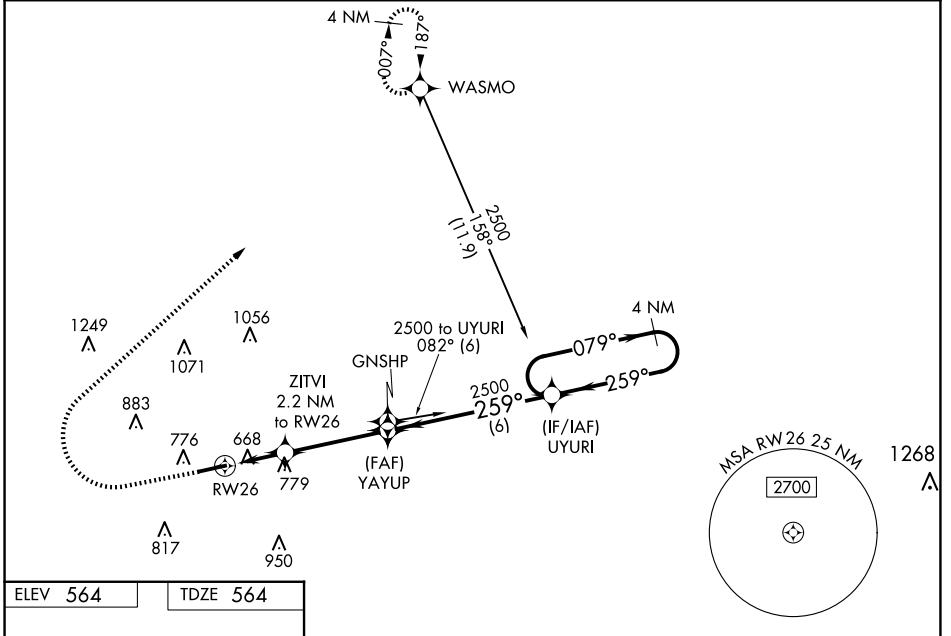
WAAS CH <b>82221</b> <b>W26A</b>	APP CRS <b>259°</b>	Rwy Idg TDZE <b>564</b> Apt Elev <b>564</b>
--	------------------------	---

# RNAV (GPS) RWY 26

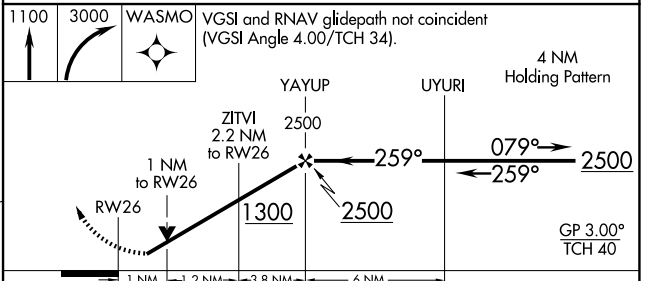
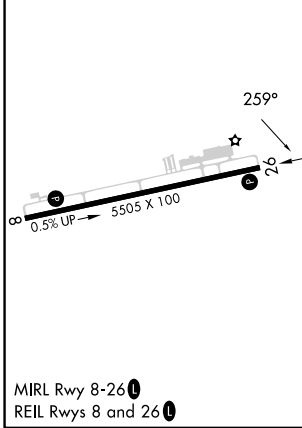
HOPKINSVILLE-CHRISTIAN COUNTY (HVC)

RNP APCH - GPS.	<p><b>NA</b> Circling Rwy 8 NA at night. For uncompensated Baro-VNAV systems, LNAV/VNAV NA below -16°C or above 54°C. Baro-VNAV and VDP NA when using Clarksville altimeter setting. Helicopter visibility reduction below ¾ SM NA. When local altimeter setting not received, use Clarksville altimeter setting and increase LPV DA to 851 feet and all visibilities ½ SM; increase LNAV/VNAV DA to 1033 feet and all visibilities ⅓ SM; increase all MDAs 40 feet and Circling visibility Cat C ¼ SM.</p>	<p><b>MISSED APPROACH:</b> Climb to 1100 then climbing right turn to 3000 direct WASMO and hold.</p>
-----------------	---	--

AWOS-3 <b>132.575</b>	CAMPBELL APP CON <b>118.1 269.525</b>	UNICOM <b>122.8 (CTAF) 0</b>
--------------------------	--	---------------------------------



ELEV 564	TDZE 564
----------	----------



CATEGORY	A	B	C	D
LPV DA		814-7/8	250 (300-7/8)	
LNAV/VNAV DA		996-1¼	432 (500-1¼)	
LNAV MDA	1040-1	476 (500-1)	1040-1¾	476 (500-1¾)
<b>C</b> CIRCLING	1140-1	576 (600-1)	1280-2 716 (800-2)	1320-2½ 756 (800-2½)

SE-1, 15 MAY 2025 to 12 JUN 2025

SE-1, 15 MAY 2025 to 12 JUN 2025