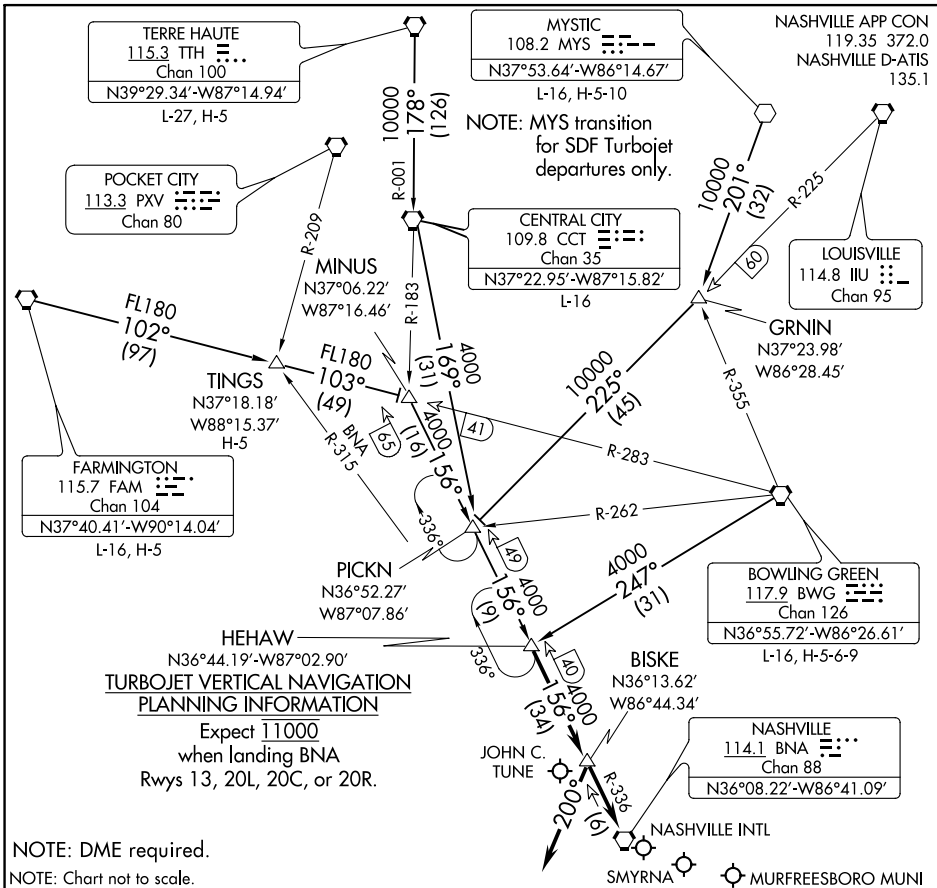


HEHAW SIX ARRIVAL



SE-1, 19 JUL 2018 to 16 AUG 2018

SE-1, 19 JUL 2018 to 16 AUG 2018

BOWLING GREEN TRANSITION (BWG.HEHAW6): From over BWG VORTAC via BWG R-247 to HEHAW INT. Thence....

CENTRAL CITY TRANSITION (CCT.HEHAW6): From over CCT VORTAC via CCT R-169 to PICKN INT, then via BNA R-336 to HEHAW INT. Thence....

FARMINGTON TRANSITION (FAM.HEHAW6): From over FAM VORTAC via FAM R-102 and BWG R-283 to MINUS INT, then via BNA R-336 to HEHAW INT. Thence....

MYSTIC TRANSITION (MYS.HEHAW6): From over MYS VOR via MYS R-201 to GRNIN INT, then via IUU R-225 to PICKN INT, then via BNA R-336 to HEHAW INT. Thence....

TERRE HAUTE TRANSITION (TTH.HEHAW6): From over TTH VORTAC via TTH R-178 and CCT R-001 to CCT VORTAC, then via CCT R-169 to PICKN INT, then via BNA R-336 to HEHAW INT. Thence....

TINGS TRANSITION (TINGS.HEHAW6): From over TINGS INT via BWG R-283 to MINUS INT, then via BNA R-336 to HEHAW INT. Thence....

....**TURBOJETS/TURBOPROPS; LANDING NORTH:** From over HEHAW INT via BNA R-336 to BISKE. Thence heading 200° for vectors to final approach course. **LANDING SOUTH:** From over HEHAW INT via BNA R-336 to BNA VORTAC. Expect vectors to final approach course.

NON-TURBINE; ALL RUNWAYS: From over HEHAW INT via BNA R-336 to BNA VORTAC. Expect vectors to final approach course passing HEHAW INT.

HEHAW SIX ARRIVAL