

VORTAC RQZ <b>112.2</b> Chan <b>59</b>	APP CRS <b>010°</b>	Rwy Idg <b>5500</b> TDZE <b>978</b> Apt Elev <b>984</b>
--	------------------------	---

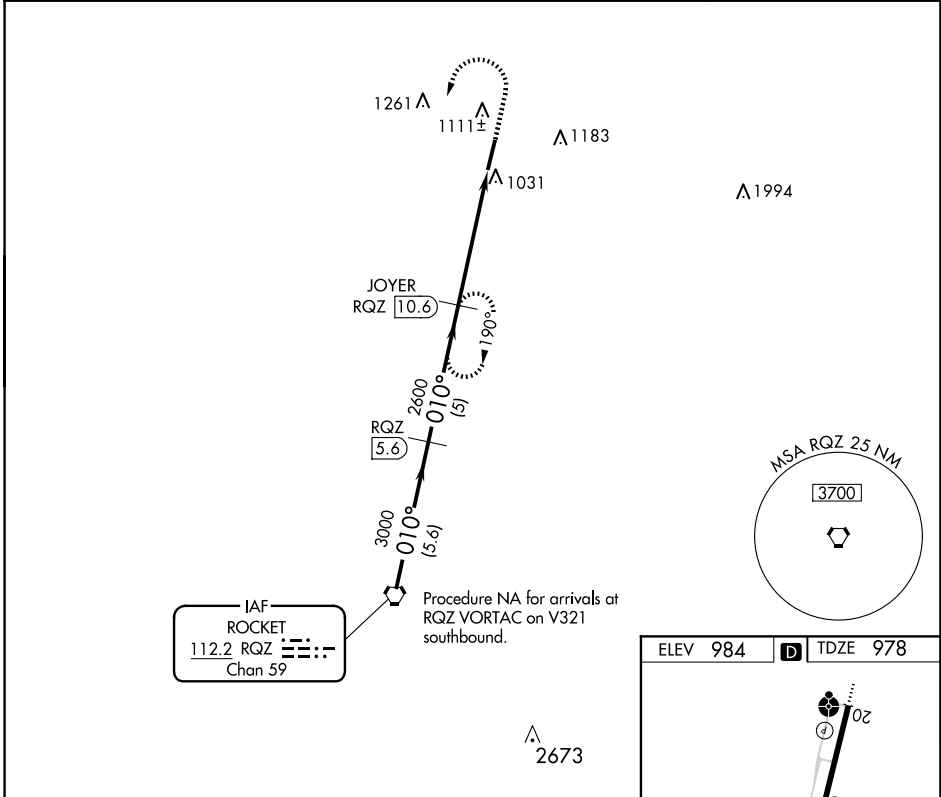
# VOR/DME RWY 2

FAYETTEVILLE MUNI (FYM)

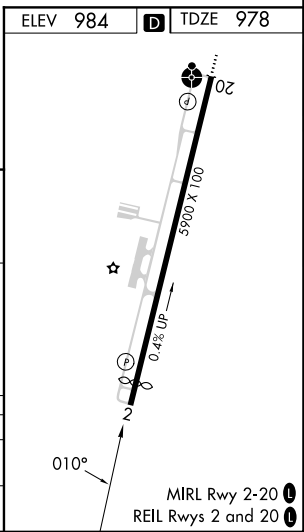
**⚠** When local altimeter setting not received, use Huntsville Exec Tom Sharp Jr Fld altimeter setting and increase all MDA 120 feet; increase S-2 Cat C/D visibility ¼ SM, Circling Cat C visibility ½ SM, and Circling Cat D visibility ¼ SM. Rwy 2 helicopter visibility reduction below ¾ SM NA.

**⚠ NA** MISSED APPROACH: Climb to 2000 then climbing left turn to 3000 via RQZ R-010 to JOYER INT and hold.

AWOS-3 <b>135.275</b>	HUNTSVILLE APP CON * <b>125.6 354.1</b>	CLNC DEL (GCO) <b>121.725</b>	UNICOM <b>122.8 (CTAF)</b>
--------------------------	--	----------------------------------	-------------------------------



CATEGORY	RQZ VORTAC				VGSI and descent angles not coincident (VGSI 3.00/TCH 22).				
	4000				2000 3000				
Procedure Turn NA		RQZ 5.6		JOYER RQZ 10.6		RQZ 15.6		JOYER RQZ 10.6	
5.6 NM		5 NM		5 NM		5 NM		5 NM	
S-2	1400-1	422 (500-1)	1400-1¼	422 (500-1¼)	1400-1½	422 (500-1½)	1400-1½	422 (500-1½)	1400-1½
CIRCLING	1420-1	1540-1	1580-1½	1580-1½	1580-1½	1580-2	1580-2	1580-2	1580-2
	436 (500-1)	556 (600-1)	596 (600-1½)	596 (600-1½)	596 (600-1½)	596 (600-2)	596 (600-2)	596 (600-2)	596 (600-2)



SE-1, 15 MAY 2025 to 12 JUN 2025

SE-1, 15 MAY 2025 to 12 JUN 2025