

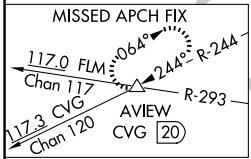
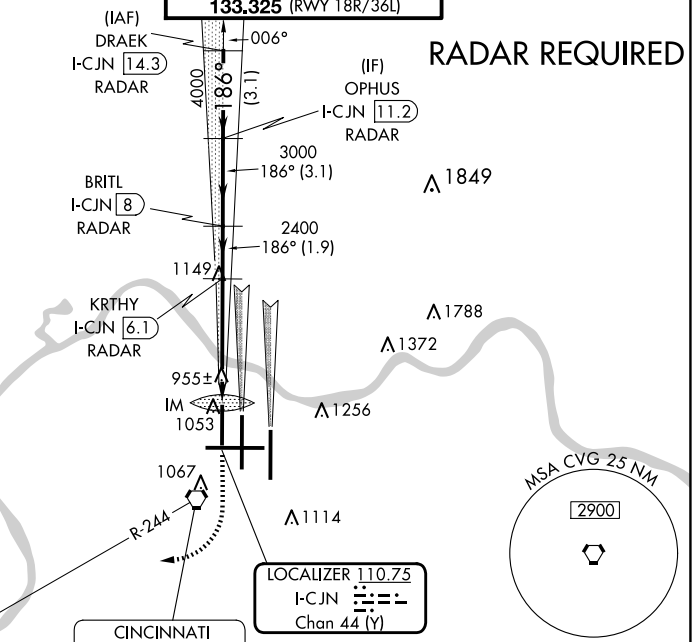
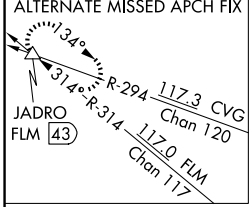
LOC/DME I-CJN	APP CRS	Rwy Idg	8000
<b>110.75</b>	<b>186°</b>	TDZE	<b>868</b>
Chan <b>44</b> (Y)		Apt Elev	<b>896</b>

# ILS RWY 18R (CAT II)

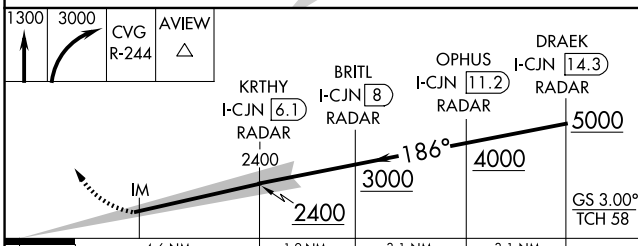
CINCINNATI/NORTHERN KENTUCKY INTL (CVG)

**⚠ Simultaneous approach authorized with Rwy 18C and 18L.** **ALSIF-2** MISSED APPROACH: Climb to 1300 then climbing right turn to 3000 via CVG R-244 to AVIEW INT/ CVG 20 DME and hold.

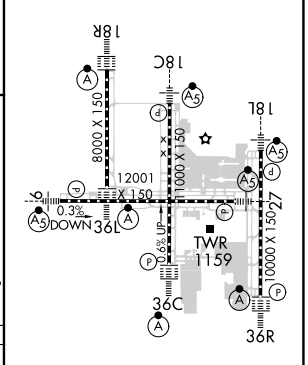
D-ATIS	CINCINNATI APP CON	CINCINNATI TOWER	GND CON	CINC DEL	CPDLC
ARR <b>134.375</b> DEP <b>135.3</b>	<b>119.7 363.15</b> (090°-269°) <b>123.875 363.15</b> (270°-089°)	<b>118.975 360.85</b> (RWY 18L/36R) <b>118.3</b> (RWYS 18C/36C, 09/27) <b>133.325</b> (RWY 18R/36L)	<b>121.7</b>	<b>127.175</b>	



ELEV 896	<b>D</b>	TDZE 868
----------	----------	----------



1300	3000	CVG R-244	AVIEW
------	------	-----------	-------



CATEGORY	A	B	C	D
S-ILS-18R	RA 113/12 100 DA 968			

## CATEGORY II ILS - SPECIAL AIRCREW & AIRCRAFT CERTIFICATION REQUIRED

HIRL all Rwys  
TDZ/CL all Rwys except 27

SE-1, 15 MAY 2025 to 12 JUN 2025

SE-1, 15 MAY 2025 to 12 JUN 2025