

LOC/DME I-EEI 110.35 Chan 40 (Y)	APP CRS 006°	Rwy Idg TDZE Apt Elev 10000 896 896
---	------------------------	---

ILS or LOC RWY 36R

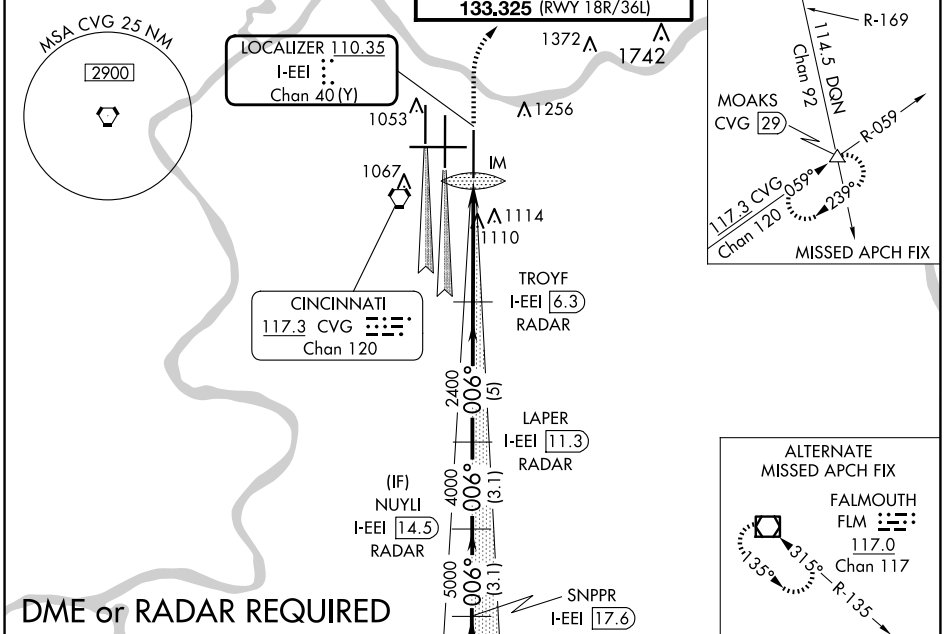
CINCINNATI/NORTHERN KENTUCKY INTL (CVG)

Simultaneous approach authorized with Rwy 36C and 36L.
DME or radar required.

ALSF-2

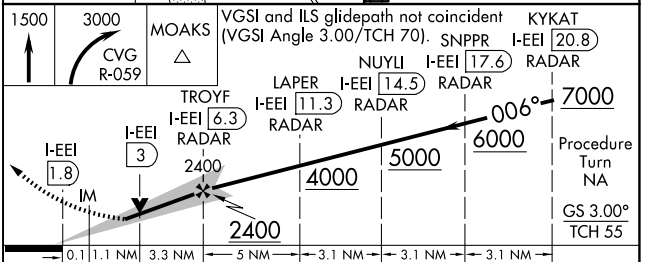
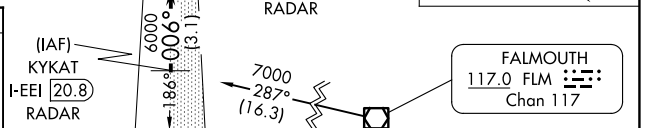
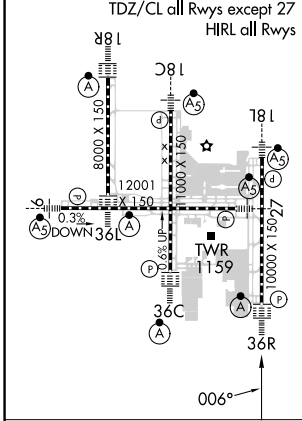
MISSED APPROACH: Climb to 1500 then climbing right turn to 3000 via CVG R-059 to MOAKS Int/CVG 29 DME and hold.

D-ATIS ARR 134.375 DEP 135.3	CINCINNATI APP CON 119.7 363.15 (090°-269°) 123.875 363.15 (270°-089°)	CINCINNATI TOWER 118.975 360.85 (RWY 18L/36R) 118.3 (RWYS 18C/36C, 09/27) 133.325 (RWY 18R/36L)	GND CON 121.7	CLNC DEL 127.175	CPDLC
---	--	---	-------------------------	----------------------------	-------



DME or RADAR REQUIRED

ELEV 896	D	TDZE 896
----------	----------	----------



CATEGORY	A	B	C	D
S-ILS 36R	1096/18		200 (200-½)	
S-LOC 36R	1360/24	464 (500-½)	1360/50	464 (500-1)
CIRCLING	1460-1	564 (600-1)	1560-1¾ 664 (700-1¾)	1560-2 664 (700-2)

FAF to MAP 4.5 NM					
Knots	60	90	120	150	180
Min:Sec	4:30	3:00	2:15	1:48	1:30

SE-1, 15 MAY 2025 to 12 JUN 2025

SE-1, 15 MAY 2025 to 12 JUN 2025