

LOC/DME I-URN 111.9 Chan 56	APP CRS 096°	Rwy Idg 11640 TDZE 883 Apt Elev 896
---	------------------------	--

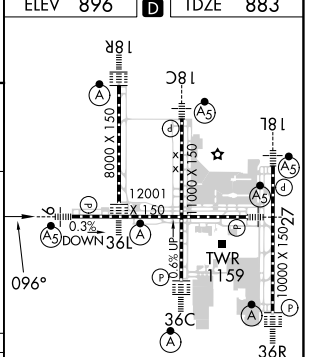
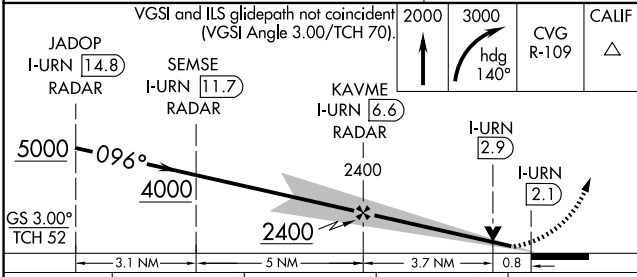
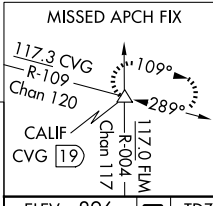
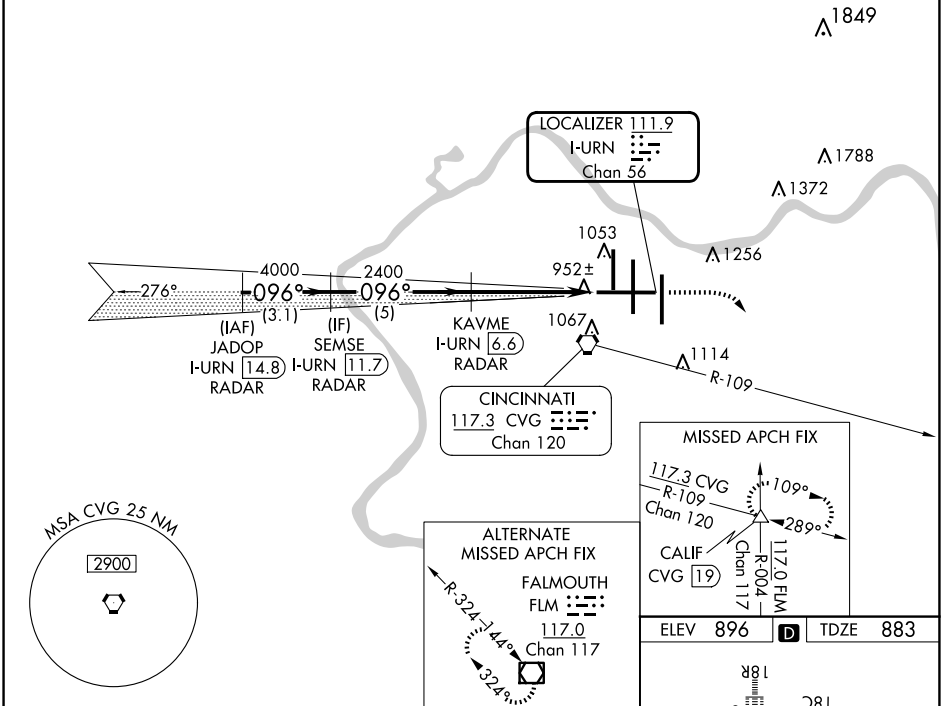
ILS or LOC RWY 9

CINCINNATI/NORTHERN KENTUCKY INTL (CVG)

RADAR required for procedure entry. DME or RADAR required.
 For inop ALS increase S-LOC 9 Cats C/D visibility to RVR 5500.

MALS
 MISSED APPROACH: Climb to 2000 then climbing right turn to 3000 on heading 140° and CVG R-109 to CALIF INT/CVG 19 DME and hold.

D-ATIS ARR 134.375 DEP 135.3	CINCINNATI APP CON 119.7 363.15 (090°-269°) 123.875 363.15 (270°-089°)	CINCINNATI TOWER 118.975 360.85 (RWY 18L/36R) 118.3 (RWYS 18C/36C, 09/27) 133.325 (RWY 18R/36L)	GND CON 121.7	CLNC DEL 127.175	CPDLC
---	--	---	-------------------------	----------------------------	-------



VGSI and ILS glidepath not coincident (VGSI Angle 3.00/TCH 70).	2000	3000	CVG R-109	CALIF
JADOP I-URN 14.8 RADAR	SEMSE I-URN 11.7 RADAR	KAVME I-URN 6.6 RADAR	I-URN 2.9	I-URN 2.1
5000	4000	2400	2400	2000
GS 3.00° TCH 52	3.1 NM	5 NM	3.7 NM	0.8 NM
CATEGORY	A	B	C	D
S-ILS 9	1083/18		200 (200-½)	
S-LOC 9	1220/24		337 (400-½)	
	1460-1		564 (600-1)	
	1560-1¾		664 (700-¾)	
	1560-2		664 (700-2)	

ELEV 896	TDZE 883
HRL all Rwy's	
TDZ/CL all Rwy's except 27	
FAF to MAP 4.5 NM	
Knots	60 90 120 150 180
Min:Sec	4:30 3:00 2:15 1:48 1:30

ILS or LOC RWY 9

SE-1, 15 MAY 2025 to 12 JUN 2025

SE-1, 15 MAY 2025 to 12 JUN 2025