

WAAS CH <b>58300</b> <b>W35A</b>	APP CRS <b>347°</b>	Rwy Idg <b>5999</b> TDZE <b>550</b> Apt Elev <b>550</b>
--	------------------------	---

# RNAV (GPS) RWY 35

OUTLAW FLD (CKV)

RNP APCH - GPS.

**⚠** Circling Rwy 5, 17, 23 NA at night. Baro-VNAV and VDP NA when using Campbell AAF (Fort Campbell) altimeter setting. Rwy 35 helicopter visibility reduction below  $\frac{3}{4}$  SM NA. Inop table does not apply to LPV all Cats. For uncompensated Baro-VNAV systems, LNAV/VNAV NA below -13°C or above 54°C. Circling NA W of Rwy 17-35. For inop ALS, increase LNAV/VNAV all Cats visibility to  $\frac{7}{8}$  SM. When local altimeter setting not received, use Campbell AAF (Fort Campbell) altimeter setting.

MALS

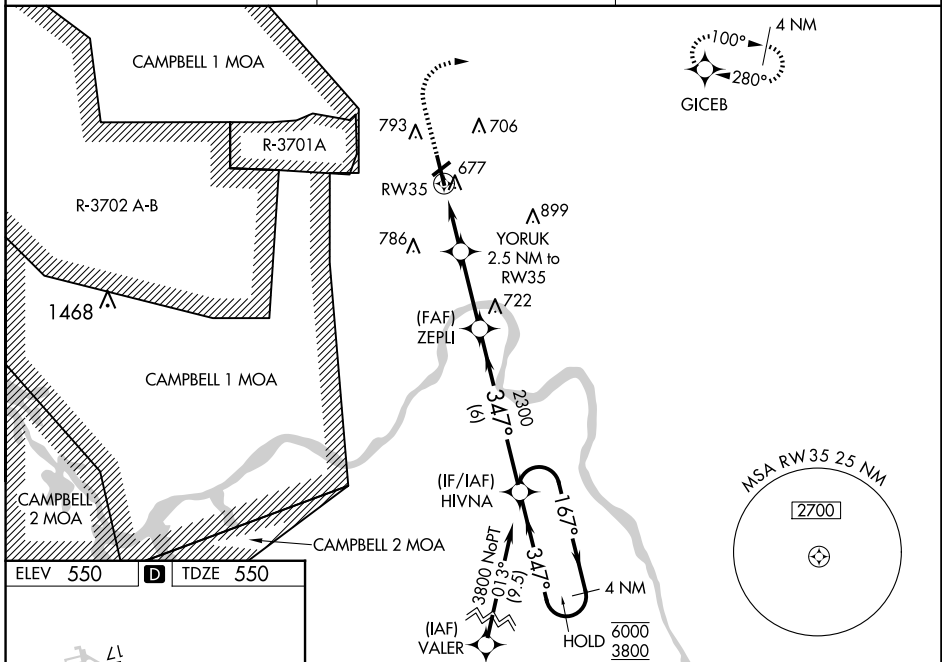


**MISSED APPROACH:**  
Climb to 1000 then climbing right turn to 3000 direct GICEB and hold.

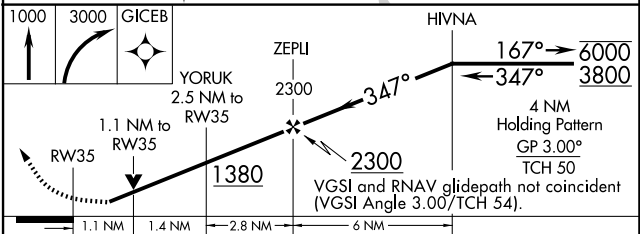
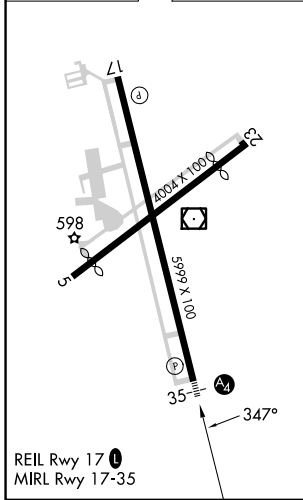
ASOS  
**134.575**

CAMPBELL APP CON  
**134.35 307.025**

UNICOM  
**122.8(CTAF) 0**



ELEV 550 **D** TDZE 550



CATEGORY	A	B	C	D
LPV DA		805- $\frac{3}{4}$	255 (300- $\frac{3}{4}$ )	
LNAV/VNAV DA		838- $\frac{3}{4}$	288 (300- $\frac{3}{4}$ )	
LNAV MDA	940- $\frac{3}{4}$	390 (400- $\frac{3}{4}$ )	940- $\frac{7}{8}$	390 (400- $\frac{7}{8}$ )
<b>C</b> CIRCLING	1000-1 450 (500-1)	1020-1 470 (500-1)	1020-1 $\frac{1}{2}$ 470 (500-1 $\frac{1}{2}$ )	1200-2 650 (700-2)

SE-1, 15 MAY 2025 to 12 JUN 2025

SE-1, 15 MAY 2025 to 12 JUN 2025