

WAAS Ch <b>42626</b> <b>W23A</b>	APP CRS <b>232°</b>	Rwy Idg TDZE Apt Elev	<b>6202</b> <b>568</b> <b>577</b>
--	------------------------	-----------------------------	---

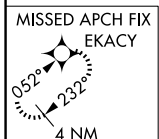
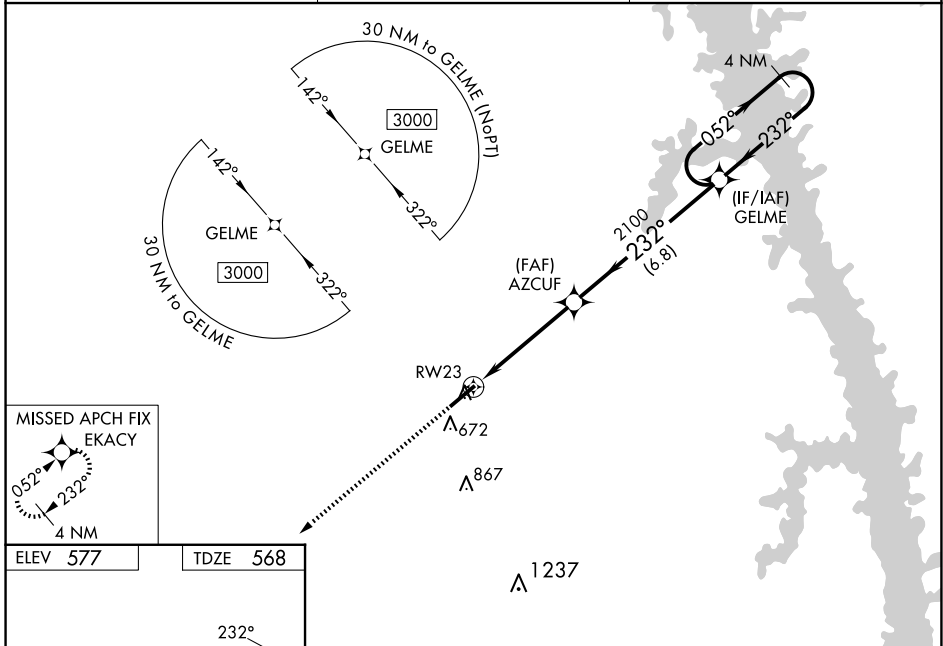
# RNAV (GPS) RWY 23

KYLE-OAKLEY FLD (CEY)

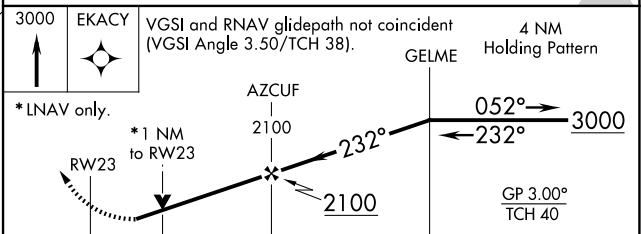
**⚠** DME/DME RNP-0.3 NA. Baro-VNAV and VDP NA with Mayfield altimeter setting. When local altimeter setting not received use Mayfield altimeter setting: increase all DA/MDA 40 feet, and increase LPV, LNAV/VNAV all Cats, and LNAV Cats C and D visibility 1/8 mile. For inop ODALS, increase LPV and LNAV/VNAV all Cats, and LNAV Cats C and D visibility 1/4 mile. Helicopter visibility reduction below 3/4 SM NA. For uncompensated Baro-VNAV systems, LNAV/VNAV NA below -16°C (4°F) or above 54°C (130°F).

**ODALS** MISSED APPROACH: Climb to 3000 direct EKACY and hold.

AWOS-3 <b>119.975</b>	MEMPHIS CENTER <b>133.65 292.15</b>	UNICOM <b>122.7 (CTAF) 0</b>
--------------------------	--	---------------------------------



ELEV 577	TDZE 568
----------	----------



CATEGORY	A	B	C	D
LPV DA		859-7/8	291 (300-7/8)	
LNAV/VNAV DA		861-7/8	293 (300-7/8)	
LNAV MDA	980-3/4	412 (500-3/4)	980-1	412 (500-1)
<b>C</b> CIRCLING	1000-1 423 (500-1)	1040-1 463 (500-1)	1040-1 1/2 463 (500-1 1/2)	1180-2 603 (700-2)

MIRL Rwy 5-23 0  
REL Rwy 5 0

SE-1, 15 MAY 2025 to 12 JUN 2025

SE-1, 15 MAY 2025 to 12 JUN 2025