

WAAS CH 53312 W02A	APP CRS 023°	Rwy Idg TDZE 1168 Apt Elev 1178	5499
--	------------------------	---	-------------

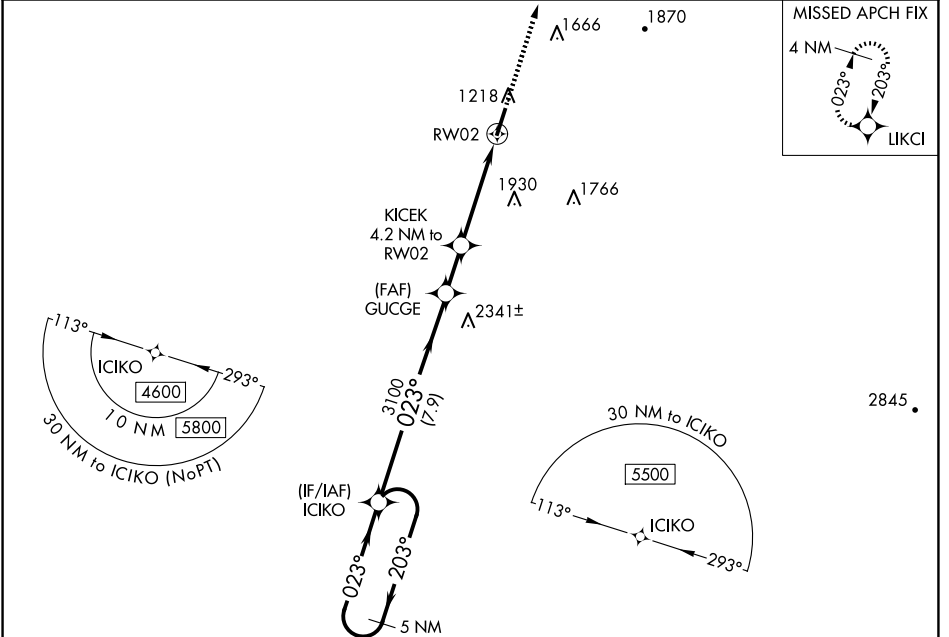
RNAV (GPS) RWY 2

WILLIAMSBURG-WHITLEY COUNTY (BYL)

NA When local altimeter setting not received, use London altimeter setting and increase DA 48 feet, MDA 60 feet and LPV all Cats visibility 1/8 mile. DME/DME RNP-0.3 NA. Visibility reduction by helicopters NA. VDP NA with London altimeter setting.

MISSED APPROACH: Climb to 4000 direct LIKCI and hold.

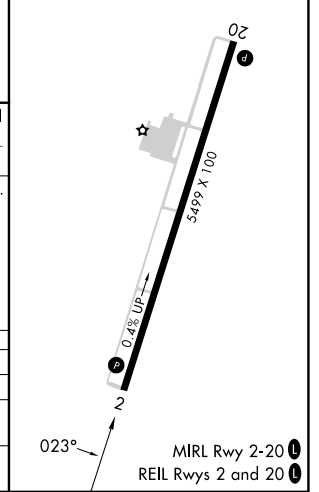
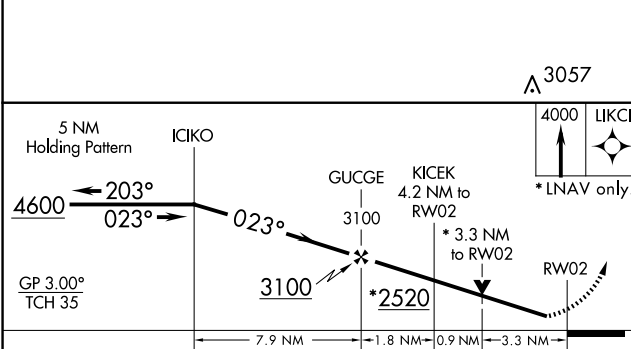
AWOS-3 119.575	INDIANAPOLIS CENTER 124.625 371.925	UNICOM 122.7 (CTAF) 0
--------------------------	---	---------------------------------



SE-1, 15 MAY 2025 to 12 JUN 2025

SE-1, 15 MAY 2025 to 12 JUN 2025

ELEV 1178	TDZE 1168
-----------	-----------



CATEGORY	A	B	C	D
LPV DA	1418 7/8		250 (300-7/8)	
RNAV MDA	2300-1 1/4 1132 (1200-1 1/4)	2300-1 1/2 1132 (1200-1 1/2)	2300-3	1132 (1200-3)
CIRCLING	2300-1 1/4 1122 (1200-1 1/4)	2300-1 1/2 1122 (1200-1 1/2)	2300-3	1122 (1200-3)