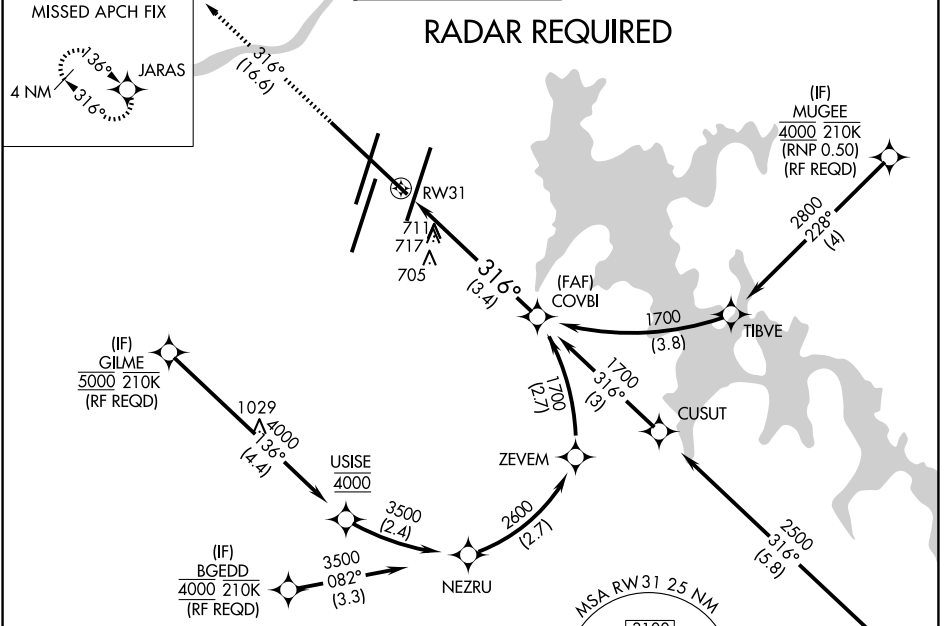


APP CRS	Rwy Ldg	<b>9487</b>
<b>316°</b>	TDZE	<b>578</b>
	Apt Elev	<b>599</b>

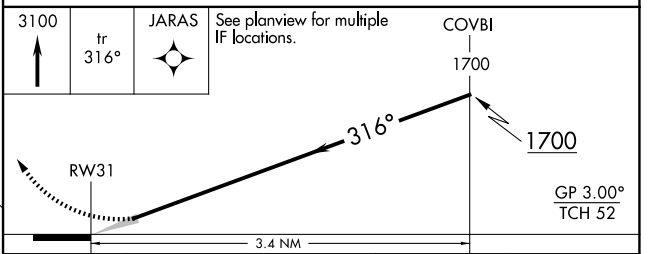
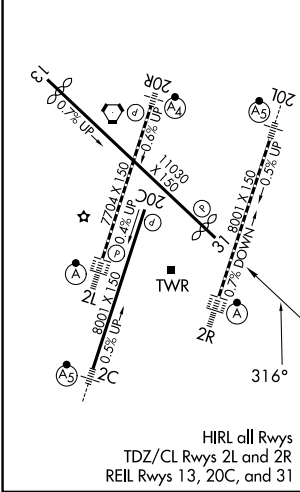
# RNAV (RNP) Z RWY 31

NASHVILLE INTL (BNA)

<p><b>▼</b> For uncompensated Baro-VNAV systems, procedure NA below -16°C (4°F) or above 54°C (130°F). GPS required.</p>		<p>MISSED APPROACH: Climb to 3100 on track 316° to JARAS and hold.</p>			
D-ATIS	NASHVILLE APP CON	NASHVILLE TOWER	GND CON	CLNC DEL	CPDLC
<b>135.1</b>	<b>118.4 360.7</b> (030°-196°) <b>119.35 372.0</b> (197°-029°)	<b>118.6 257.8</b>	<b>121.9 348.6</b>	<b>126.05</b>	



ELEV	<b>599</b>	<b>D</b>	TDZE	<b>578</b>
------	------------	----------	------	------------



CATEGORY	A	B	C	D
RNP 0.25 DA		1025-1½	447 (500-1½)	
RNP 0.30 DA		1099-1¾	521 (600-1¾)	

## AUTHORIZATION REQUIRED

SE-1, 07 AUG 2025 to 04 SEP 2025

SE-1, 07 AUG 2025 to 04 SEP 2025