

NASHVILLE, TENNESSEE

AL-282 (FAA)

24361

**ILS RWY 2L (CAT II & III)**  
NASHVILLE INTL (BNA)

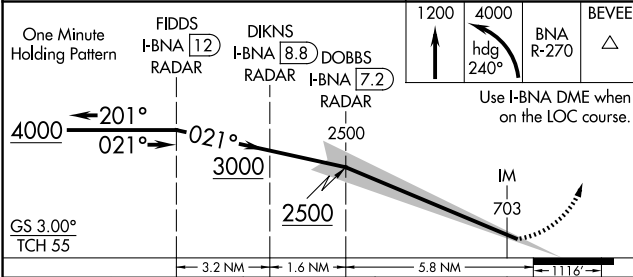
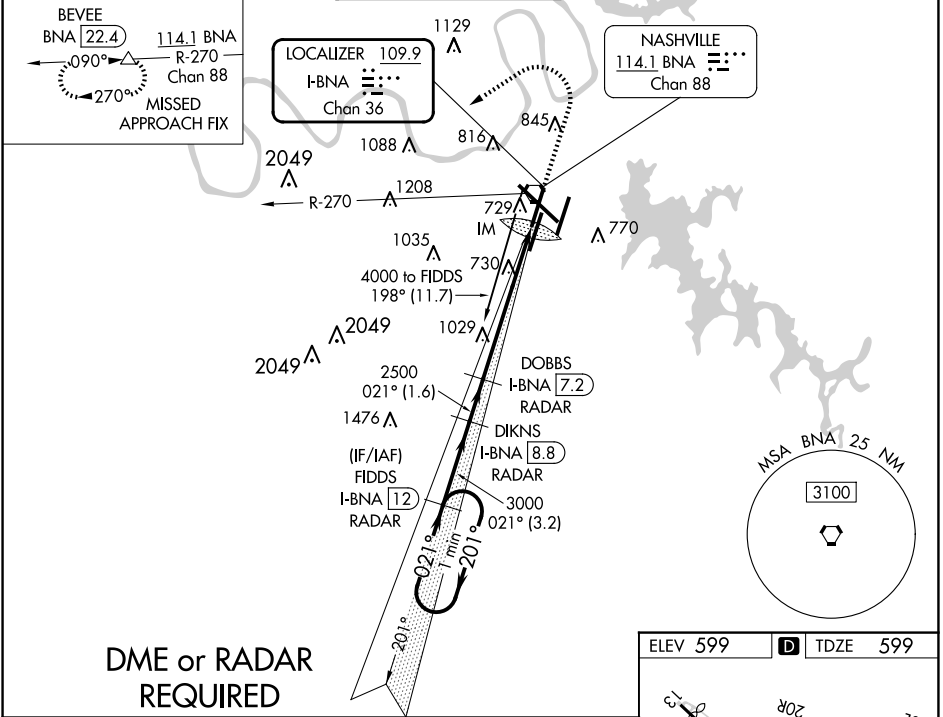
LOC/DME I-BNA <b>109.9</b> Chan <b>36</b>	APP CRS <b>021°</b>	Rwy ldg <b>7702</b> TDZE <b>599</b> Apt Elev <b>599</b>
-------------------------------------------------	------------------------	---------------------------------------------------------------

▼ Simultaneous approach authorized with Rwy 2R.  
▲ DME or radar required. Cat II: RVR 1000 authorized with specific OPSPEC, MSPEC, or LOA approval and use of Autoland or HUD to touchdown.



**MISSED APPROACH:** Climb to 1200 then climbing left turn to 4000 on heading 240° and on BNA VORTAC R-270 to BEVEE/BNA 22.4 DME and hold.

D-ATIS <b>135.1</b>	NASHVILLE APP CON <b>118.4 360.7</b>	NASHVILLE TOWER <b>118.6 257.8</b>	GND CON <b>121.9 348.6</b>	CLNC DEL <b>126.05</b>	CPDLC
------------------------	-----------------------------------------	---------------------------------------	-------------------------------	---------------------------	-------



CATEGORY	A	B	C	D
S-ILS 2L	CAT II RA 104/12 100 DA 699			
S-ILS 2L	CAT III RVR 600			

**CATEGORY II & III ILS - SPECIAL AIRCREW & AIRCRAFT CERTIFICATION REQUIRED**

ELEV 599 TDZE 599

HIRL all Rwws  
TDZ/CL Rwws 2L and 2R  
REIL Rwws 13, 20C, and 31

SE-1, 15 MAY 2025 to 12 JUN 2025

SE-1, 15 MAY 2025 to 12 JUN 2025

NASHVILLE, TENNESSEE  
Amdt 11 27APR17

36°07'N-86°41'W

NASHVILLE INTL (BNA)  
**ILS RWY 2L (CAT II & III)**