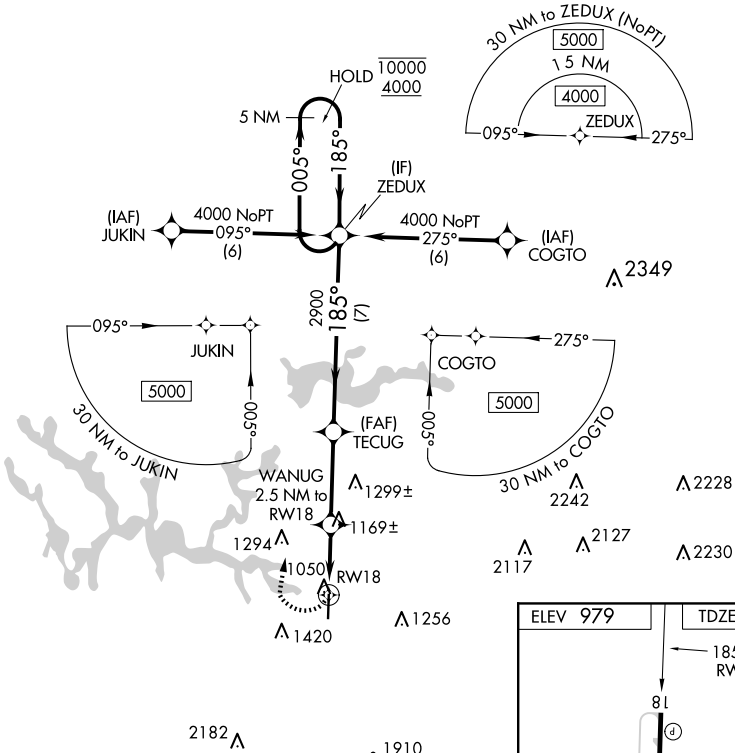


APP CRS	Rwy Idg	5003
185°	TDZE	978
	Apt Elev	979

RNAV (GPS) Y RWY 18

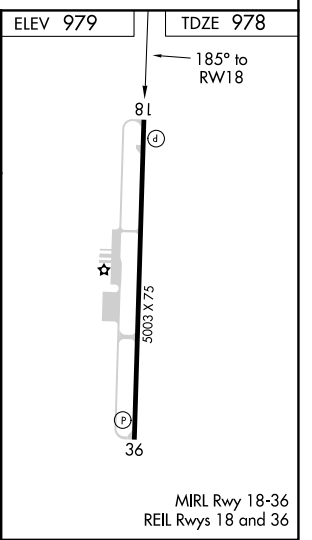
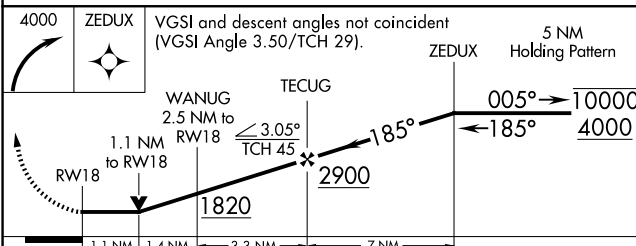
WINCHESTER MUNI (BGF)

RNP APCH.		MISSED APPROACH: Climbing right turn to 4000 direct ZEDUX and hold.	
Rwy 18 helicopter visibility reduction below 3/4 SM NA.		AWOS-3 121.675	MEMPHIS CENTER 128.15 323.125
		GCO 121.725	UNICOM 122.8 (CTAF)



SE-1, 15 MAY 2025 to 12 JUN 2025

SE-1, 15 MAY 2025 to 12 JUN 2025



CATEGORY	A	B	C	D
LNVA MDA	1420-1	442 (500-1)	1420-1 ³ / ₈ 442 (500-1 ³ / ₈)	1420-1 ¹ / ₂ 442 (500-1 ¹ / ₂)
CIRCLING	1480-1 501 (600-1)	1780-1 801 (900-1)	1820-2 ¹ / ₂ 841 (900-2 ¹ / ₂)	2380-3 1401 (1500-3)