

WAAS CH 50223 W23A	APP CRS 235°	Rwy Idg 5004 TDZE 921 Apt Elev 921
--	------------------------	---

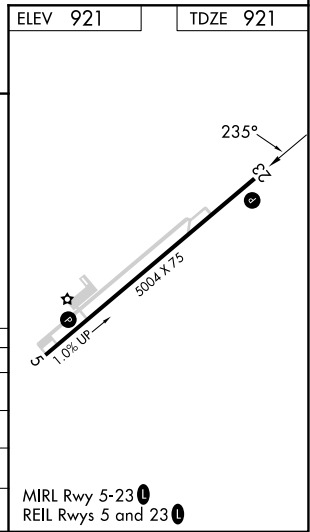
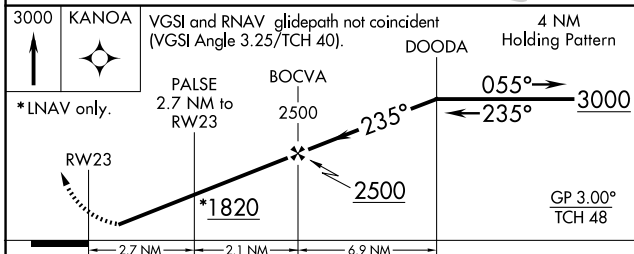
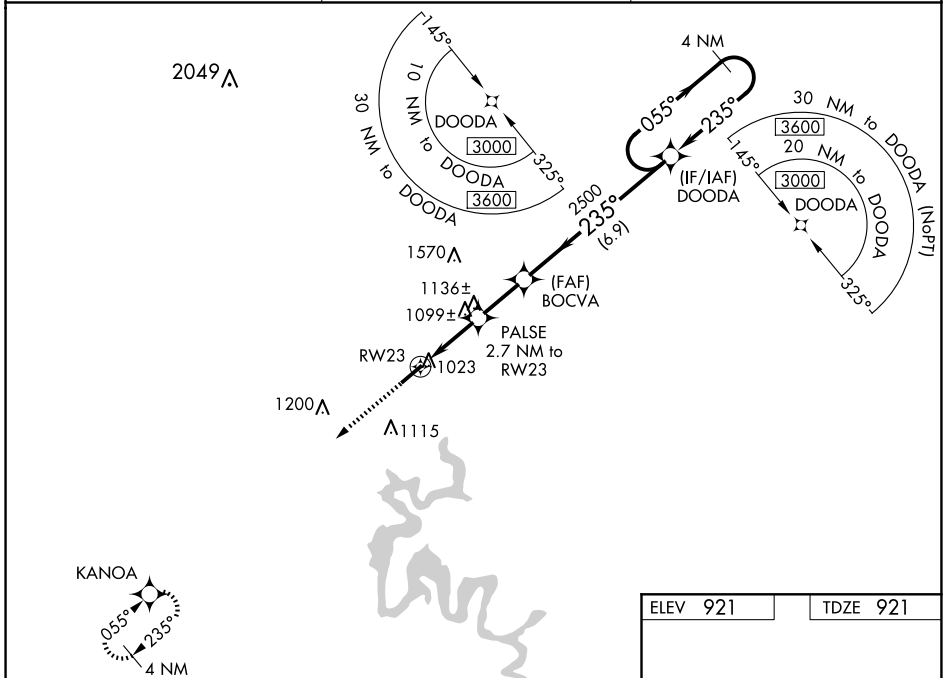
RNAV (GPS) RWY 23

TAYLOR COUNTY (AAS)

▼ Baro-VNAV NA when using Somerset altimeter setting. For uncompensated Baro-VNAV systems, LNAV/VNAV NA below -16°C (4°F) or above 54°C (130°F). DME/DME RNP-0.3 NA. When local altimeter setting not received, use Somerset altimeter setting: increase all DA 89 feet and all MDA 100 feet; increase LPV all Cats visibility ¼ mile, increase LNAV/VNAV all Cats visibility ⅓ mile, increase LNAV Cats C and D visibility ¼ mile, and increase Circling Cats C visibility ¼ mile and Cat D visibility ½ mile. Helicopter visibility reduction below ¾ SM NA.

▲ NA MISSED APPROACH: Climb to 3000 direct KANOA and hold.

AWOS-3 121.125	INDIANAPOLIS CENTER 124.625 353.65	UNICOM 122.7 (CTAF) 0
--------------------------	--	---------------------------------



CATEGORY	A	B	C	D
LPV DA		1177-¾	256 (300-¾)	
LNAV/VNAV DA		1366-1½	445 (500-1½)	
LNAV MDA	1360-1	439 (500-1)	1360-1¼	439 (500-1¼)
C CIRCLING	1380-1 459 (500-1)	1400-1 479 (500-1)	1480-1½ 559 (600-1½)	1660-2¼ 739 (800-2¼)

SE-1, 15 MAY 2025 to 12 JUN 2025

SE-1, 15 MAY 2025 to 12 JUN 2025