

# WHAEL THREE ARRIVAL

HOUSTON, TEXAS

SC-5, 16 AUG 2018 to 13 SEP 2018

## ARRIVAL DESCRIPTION

**FFSSH TRANSITION (FFSSH.WHAEL3):** From over FFSSH INT on ELA R-262 to WHAEL INT. Thence, . . . .

**EATIT TRANSITION (EATIT.WHAEL3):** From over EATIT INT on TNV R-204 to WHAEL INT. Thence, . . . .

. . . . from over WHAEL INT on TNV R-204 to COWZZ INT, then on TNV R-204 to TNV VOR/DME. Depart TNV VOR/DME heading 070° for vectors to final approach course.

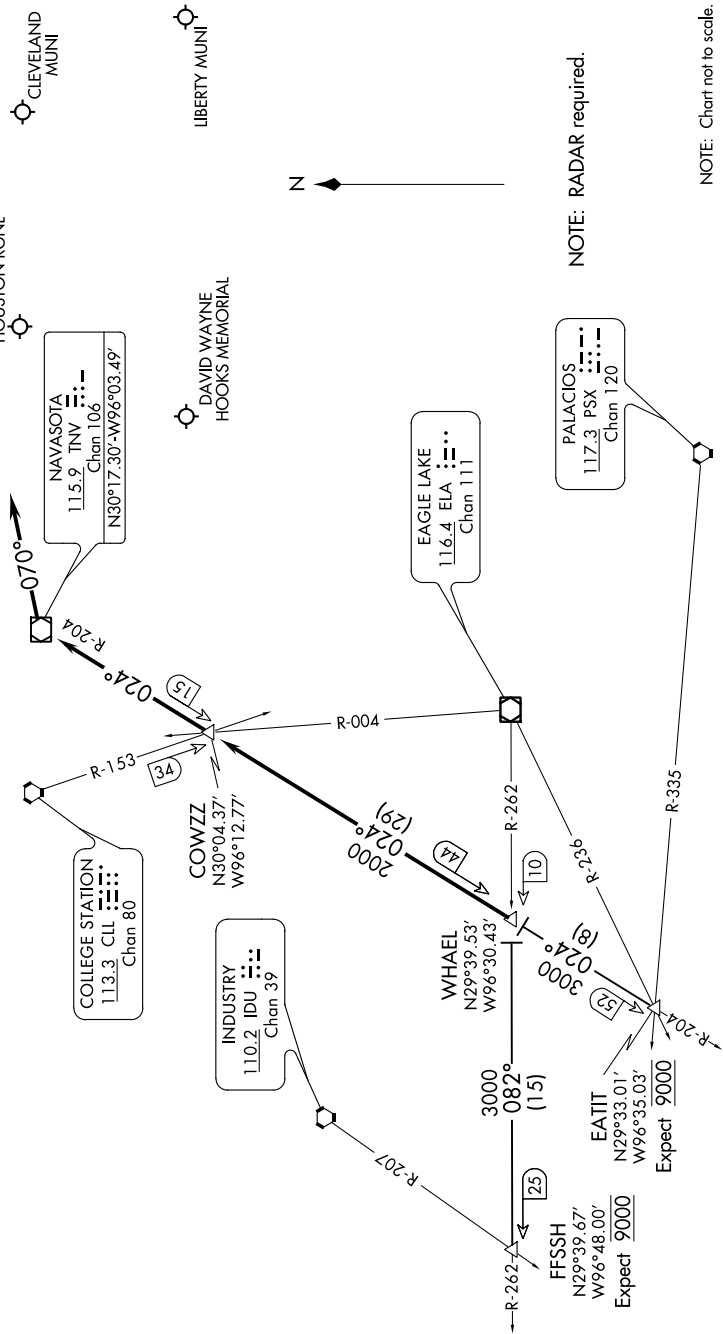
HOUSTON APP CON  
124.22 306.97

DAVID WAYNE HOOKS MEMORIAL ATIS  
128.375

CONROE-NORTH HOUSTON RGNL ATIS  
118.325

CONROE-NORTH HOUSTON RGNL

CLEVELAND MUNI



NOTE: RADAR required.

NOTE: Chart not to scale.

# WHAEL THREE ARRIVAL

HOUSTON, TEXAS

SC-5, 16 AUG 2018 to 13 SEP 2018