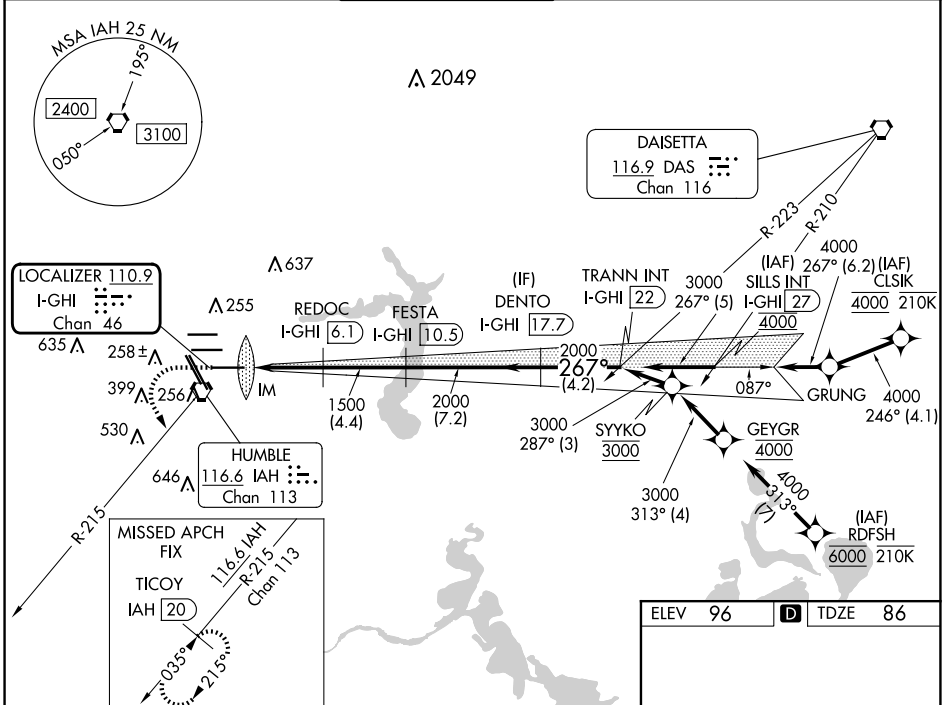


LOC/DME I-GHI <b>110.9</b> Chan <b>46</b>	APP CRS <b>267°</b>	Rwy Idg <b>10000</b> TDZE <b>86</b> Apt Elev <b>96</b>
---	------------------------	--

# ILS RWY 27 (CAT II & III)

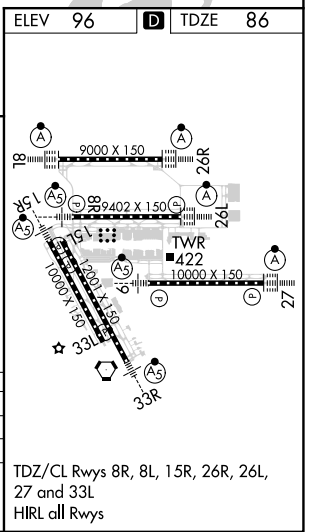
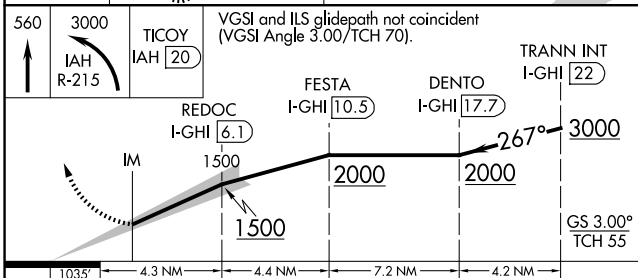
GEORGE BUSH INTCNL/HOUSTON (IAH)

RNAV 1-GPS or RADAR required for procedure entry. DME required.		ALSF-2 		MISSED APPROACH: Climb to 560 then climbing left turn to 3000 on IAH VORTAC R-215 to TICOO/IAH 20 DME and hold.	
<p>Simultaneous approach authorized. Use of FD or AP required during simultaneous operations. Cat II: RVR 1000 authorized with specific OPSPEC, MSPEC, or LOA approval and use of autoland or HUD to touchdown.</p>					
D-ATIS <b>124.05</b>	HOUSTON APP CON <b>120.05 379.1</b> EAST <b>124.35 316.15</b> WEST	HOUSTON TOWER <b>135.15 290.2</b>	GND CON <b>118.575</b>	CLNC DEL <b>128.1</b>	CPDLC



SC-5, 15 MAY 2025 to 12 JUN 2025

SC-5, 15 MAY 2025 to 12 JUN 2025



CATEGORY	A	B	C	D
S-ILS 27	CAT II RA 101/12 100 DA 186			
S-ILS 27	CAT III RVR 06			

**CATEGORY II & III ILS - SPECIAL AIRCREW & AIRCRAFT CERTIFICATION REQUIRED**

TDZ/CL Rwws 8R, 8L, 15R, 26R, 26L, 27 and 33L  
HIRL all Rwws