

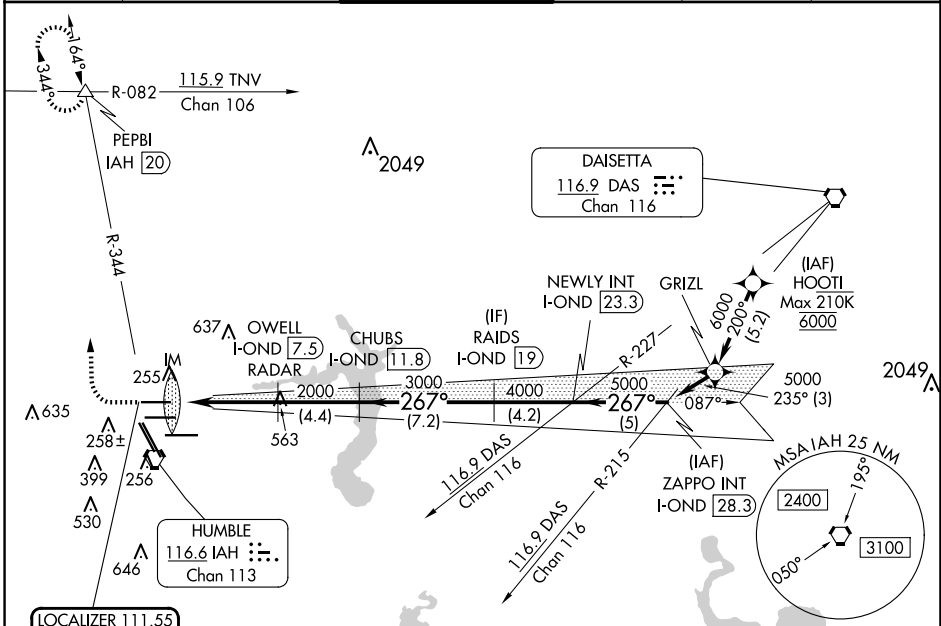
LOC/DME I-OND 111.55 Chan 52 (Y)	APP CRS 267°	Rwy Idg TDZE 95 Apt Elev 96
--	------------------------	---

ILS RWY 26R (CAT II & III)

GEORGE BUSH INTCNL/HOUSTON (IAH)

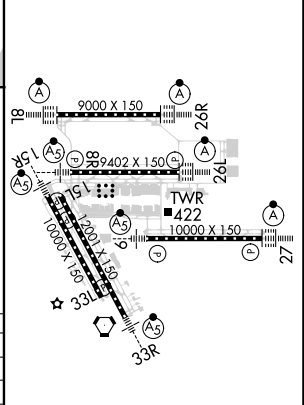
DME required. From HOOTI: RNAV 1-GPS required.		ALSF-2 	MISSED APPROACH: Climb to 600 then climbing right turn to 3000 on IAH VORTAC R-344 to PEPBI INT/IAH 20 DME and hold.
Simultaneous approach authorized with Rwy 26L and Rwy 27. Cat II: RVR 1000 authorized with specific OPSPEC, MSPEC or LOA approval and use of autoland or HUD to touchdown.			

D-ATIS 124.05	HOUSTON APP CON 120.05 379.1 EAST 124.35 316.15 WEST	HOUSTON TOWER 120.725 290.2	GND CON 118.575	CLNC DEL 128.1	CPDLC
-------------------------	--	---------------------------------------	---------------------------	--------------------------	-------



600	3000	PEPBI	OWELL I-OND 7.5	CHUBS I-OND 11.8	RAIDS I-OND 19	NEWLY INT I-OND 23.3	ZAPPO INT I-OND 28.3
↑	↻ IAH R-344	△	RADAR				
	IM 195		2000	3000	4000	5000	GS 3.00° TCH 59
	11.40'	5.8 NM	4.4 NM	7.2 NM	4.2 NM	5 NM	
CATEGORY	A	B	C	D			
S-ILS-26R	CAT II RA 99/12 100 DA 195						
S-ILS-26R	CAT III RVR 06						

ELEV 96	D	TDZE 95
---------	---	---------



CATEGORY II & III ILS - SPECIAL AIRCREW & AIRCRAFT CERTIFICATION REQUIRED

TDZ/CL Rwys 8R, 8L, 15R, 26R, 26L, 27 and 33L
HIRL all Rwys

SC-5, 15 MAY 2025 to 12 JUN 2025

SC-5, 15 MAY 2025 to 12 JUN 2025