

HOUSTON, TEXAS

AL-5461 (FAA)

24305

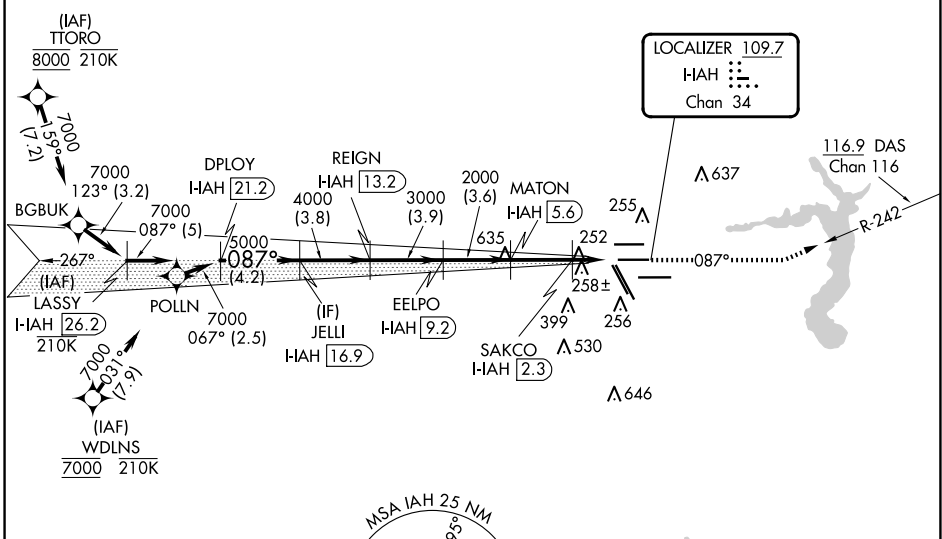
LOC/DME I-IAH <b>109.7</b> Chan <b>34</b>	APP CRS <b>087°</b>	Rwy Idg <b>9402</b> TDZE <b>95</b> Apt Elev <b>96</b>
---	------------------------	---

# ILS or LOC RWY 8R

GEORGE BUSH INTCNL/HOUSTON (IAH)

RNAV 1-GPS or RADAR required for procedure entry, DME.		MALSR 	MISSED APPROACH: Climb to 3000 on heading 087° and on DAS VORTAC R-242 to DAS VORTAC and hold.
<p>Simultaneous approach authorized. For inop ALS, increase S-LOC 8R Cat C/D/E visibility to 1 1/2 SM. For inop ALS, increase S-ILS 8R Cat E visibility to RVR 4000.</p>			

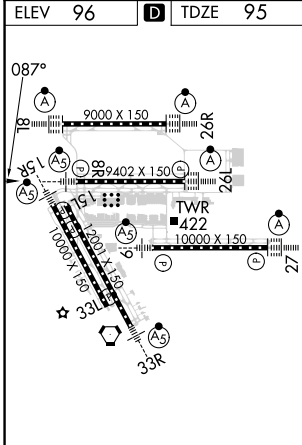
D-ATIS <b>124.05</b>	HOUSTON APP CON <b>120.05 379.1</b> EAST <b>124.35 316.15</b> WEST	HOUSTON TOWER <b>125.35 290.2</b>	GND CON <b>118.575</b>	CLNC DEL <b>128.1</b>	CPDLC △2049
-------------------------	--	--------------------------------------	---------------------------	--------------------------	----------------



SC-5, 15 MAY 2025 to 12 JUN 2025

SC-5, 15 MAY 2025 to 12 JUN 2025

ELEV 96	<b>D</b>	TDZE 95
---------	----------	---------



TDZ/CL Rwy 8R, 8L, 15R, 26R, 26L, 27 and 33L  
HIRL all Rwy



VGS and ILS glidepath not coincident (VGS Angle 3.00/TCH 72).		3000	DAS
LASSY I-IAH 26.2		↑	DAS R-242
DPLY I-IAH 21.2		hdg 087°	
JELLI I-IAH 16.9		*LOC only.	
REIGN I-IAH 13.2		I-IAH DME ANTENNA	
EELPO I-IAH 9.2		I-IAH (0.2)	
MATON I-IAH 5.6		I-IAH (1)	
SAKCO I-IAH 2.3		I-IAH (2)	
7000-087°		2000 *940	
GS 3.00°		2000	
TCH 55		2000	
-5 NM		-4.2 NM	
-3.8		-3.9	
-3.6		-3.3 NM	
-1.3 NM		1.2 NM	
CATEGORY	A	B	C
S-ILS 8R	295/18		200 (200-1/2)
S-LOC 8R	560/24	465 (500-1/2)	560/50 465 (500-1)

HOUSTON, TEXAS  
Amdt 26A 10OCT19

29°59'N-95°20'W

# ILS or LOC RWY 8R