

WAAS CH 40101 W32A	APP CRS 318°	Rwy Idg TDZE Apt Elev	6000 5 6
----------------------------------------	------------------------	-----------------------------	-------------------------------------

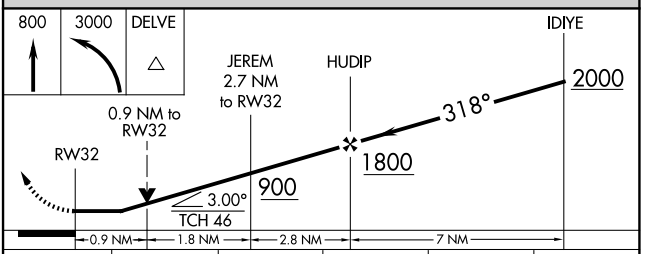
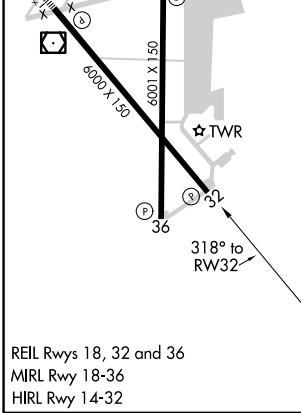
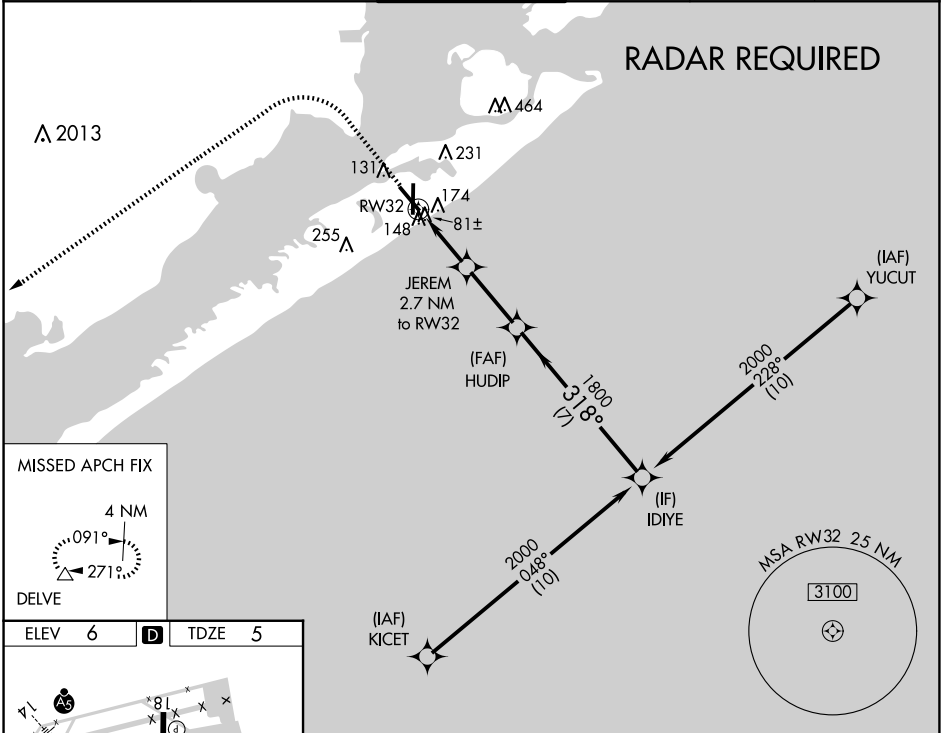
RNAV (GPS) RWY 32

SCHOLES INTL AT GALVESTON (GLS)

⚠ Circling NA east of Rwy 18 and northeast of Rwy 32. DME/DME RNP-0.3 NA. Helicopter visibility reduction below 3/4 SM NA. VDP NA with William P Hobby altimeter setting. When local altimeter setting not received, use William P Hobby altimeter setting; increase all MDA 80 feet. Increase LP Cat C/D/E visibility 1/8 SM, increase LNAV Cat C/D/E visibility 1/8 SM and increase Circling Cat C/D/E visibility 1/4 SM.

⚠ MISSED APPROACH: Climb to 800 then climbing left turn to 3000 direct DELVE and hold.

ASOS 123.95	HOUSTON APP CON 134.45 284.0	GALVESTON TOWER * 120.575 (CTAF) 0	GND CON 118.625	CLNC DEL 135.35 (When twr closed)	UNICOM 123.05
-----------------------	----------------------------------------	----------------------------------------------	---------------------------	------------------------------------------------	-------------------------



800	3000	DELVE	IDIYE
↑	↶	△	
RW32		JEREM 2.7 NM to RW32	HUDIP
0.9 NM to RW32			2000
3.00°			
TCH 46			
0.9 NM		1.8 NM	2.8 NM
CATEGORY		A	B
LP MDA		340-1	335 (400-1)
LNAV MDA		440-1 435 (500-1)	440-1 1/4 435 (500-1 1/4)
CIRCLING		500-1 494 (500-1)	520-1 514 (600-1)
		620-1 3/4 614 (700-1 3/4)	620-2 614 (700-2)
		620-2 1/4 614 (700-2 1/4)	

SC-5, 15 MAY 2025 to 12 JUN 2025

SC-5, 15 MAY 2025 to 12 JUN 2025