

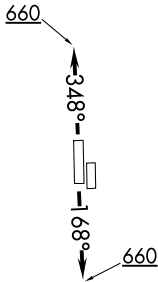
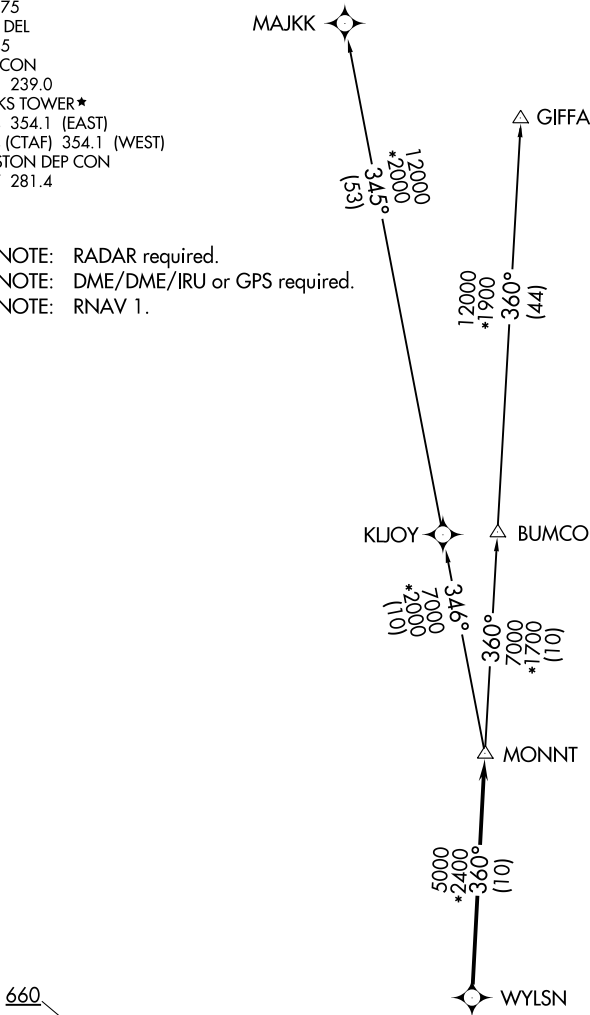
# WYLSN FIVE DEPARTURE (RNAV)

HOUSTON, TEXAS

ATIS  
 128.375  
 CLNC DEL  
 119.45  
 GND CON  
 121.8 239.0  
 HOOKS TOWER\*  
 127.4 354.1 (EAST)  
 118.4 (CTAF) 354.1 (WEST)  
 HOUSTON DEP CON  
 119.7 281.4

**TOP ALTITUDE:  
ASSIGNED BY ATC**

- NOTE: RADAR required.
- NOTE: DME/DME/IRU or GPS required.
- NOTE: RNAV 1.



### TAKEOFF MINIMUMS

- Rwys 17L, 35R: NA - Environmental.
- Waterway 17, 35: NA - Air Traffic.
- Rwys 17R, 35L: Standard with minimum climb of 500' per NM to 660.

(NARRATIVE ON FOLLOWING PAGE)

NOTE: Chart not to scale.

# WYLSN FIVE DEPARTURE (RNAV)

HOUSTON, TEXAS

SC-5, 01 FEB 2018 to 01 MAR 2018

SC-5, 01 FEB 2018 to 01 MAR 2018