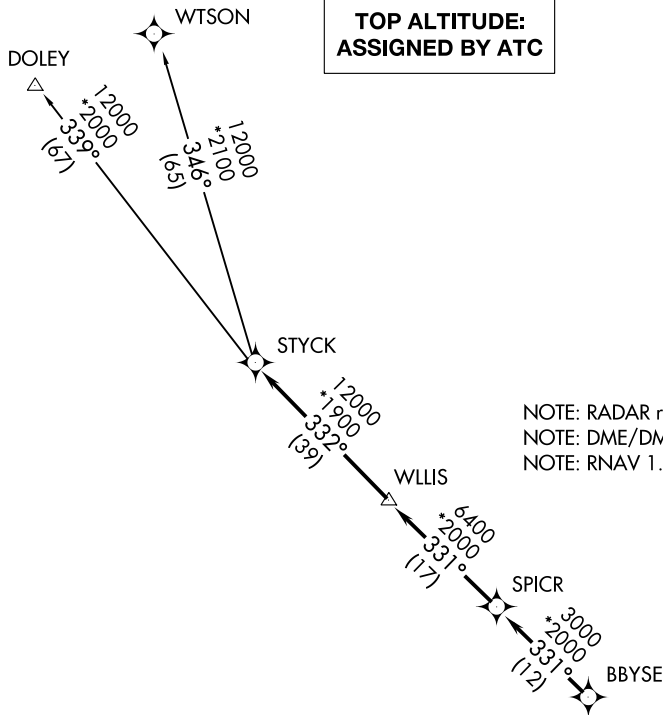


STYCK FIVE DEPARTURE (RNAV)

HOUSTON, TEXAS

**TOP ALTITUDE:
ASSIGNED BY ATC**

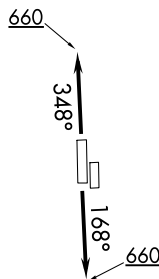
ATIS 128.375
 CLNC DEL 119.45
 GND CON 121.8 239.0
 HOOKS TOWER * 127.4 354.1 (EAST)
 118.4 (CTAF) 354.1 (WEST)
 HOUSTON DEP CON 119.7 281.4



NOTE: RADAR required.
 NOTE: DME/DME/IRU or GPS required.
 NOTE: RNAV 1.

TAKEOFF MINIMUMS

Rws 17L, 35R: NA-Environmental.
 Waterways 17, 35: NA-Air traffic.
 Rws 17R, 35L: Standard with minimum climb of 500' per NM to 660.



NOTE: Chart not to scale.

DEPARTURE ROUTE DESCRIPTION

TAKEOFF RWY 17R: Climb heading 168° to 660, expect RADAR vectors to BBYSE, thence. . .
TAKEOFF RWY 35L: Climb heading 348° to 660, expect RADAR vectors to BBYSE, thence. . .
 . . . on track 331° to SPICR, then on track 331° to WLLIS, then on track 332° to STYCK, then on (transition). Maintain ATC assigned altitude. Expect filed altitude 10 minutes after departure.

DOLEY TRANSITION (STYCK5.DOLEY)
WTSON TRANSITION (STYCK5.WTSON)