

HOUSTON, TEXAS

AL-5457 (FAA)

17341

WAAS CH 45603 W35A	APP CRS 348°	Rwy ldg 6700 TDZE 152 Apt Elev 152
--	------------------------	---

RNAV (GPS) RWY 35L

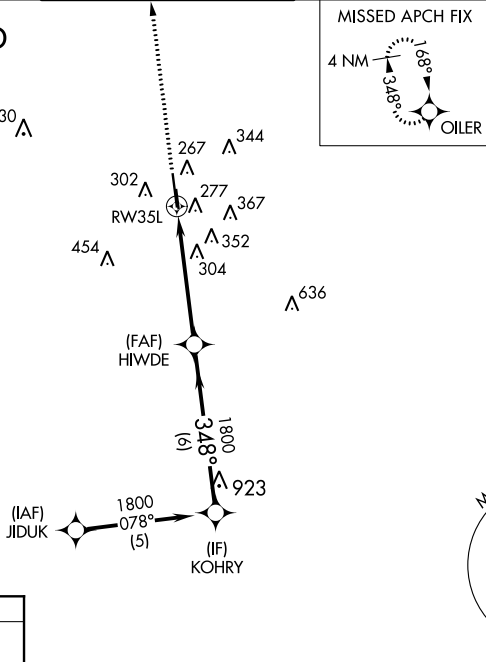
DAVID WAYNE HOOKS MEMORIAL (DWH)

⚠ Baro-VNAV NA when using George Bush Intercontinental/Houston altimeter setting. For uncompensated Baro-VNAV systems, LNAV/VNAV NA below -4°C (25°F) or above 54°C (130°F). DME/DME RNP-0.3 NA. When local altimeter setting not received, use George Bush Intercontinental/Houston altimeter setting and increase all DA 36 feet and all MDA 40 feet, increase LPV and LNAV/VNAV visibility all Cats ½ mile, LNAV visibility Cats C/D ¼ mile. Helicopter visibility reduction below ¾ SM NA. Night landing: Rwy 35R NA.

MISSED APPROACH:
Climb to 2000 direct OILER and hold.

ATIS 128.375	HOUSTON APP CON 119.7 281.4	HOOKS TOWER* 127.4 354.1 (EAST) 118.4 (CTAF) 0 354.1 (WEST)	GND CON 121.8 239.0	CLNC DEL 119.45	UNICOM 122.95
------------------------	---------------------------------------	--	-------------------------------	---------------------------	-------------------------

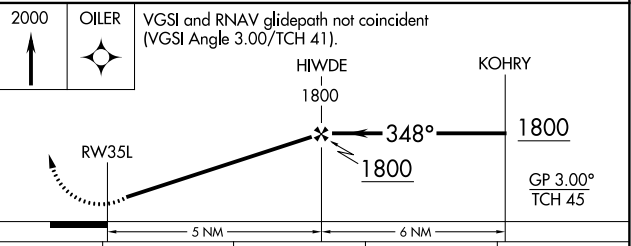
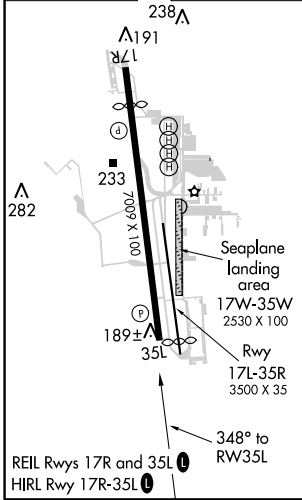
RADAR REQUIRED



SC-5, 26 APR 2018 to 24 MAY 2018

SC-5, 26 APR 2018 to 24 MAY 2018

ELEV 152	D	TDZE 152
----------	----------	----------



CATEGORY	A	B	C	D
LPV DA		451-1	299 (300-1)	
LNAV/ VNAV DA		552-1 3/8	400 (400-1 1/8)	
LNAV MDA	560-1	408 (500-1)	560-1 1/8	408 (500-1 1/8)
C CIRCLING	640-1 488 (500-1)	660-1 508 (600-1)	660-1 1/2 508 (600-1 1/2)	760-2 608 (700-2)

HOUSTON, TEXAS
Amdt 1C 02APR15

DAVID WAYNE HOOKS MEMORIAL (DWH)
30°04'N-95°33'W
RNAV (GPS) RWY 35L