

# PALACIOS NINE DEPARTURE

**TOP ALTITUDE:  
ASSIGNED BY ATC**

**TAKEOFF MINIMUMS**

Rwys 17L, 35R: NA - Environmental.  
Waterways 17, 35: NA - Air Traffic.  
Rwys 17R, 35L: Standard.

ATIS 128.375  
CLINC DEL 119.45  
GND CON 121.8 239.0  
HOOKS TOWER\* 127.4 354.1 (EAST)  
118.4 (CTAF) 354.1 (WEST)  
HOUSTON DEP CON 123.8 257.7 (Rwys 17L/R)  
119.7 281.4 (Rwys 35L/R)

HOBBY  
117.1 HUB  
Chan 118

EAGLE LAKE  
116.4 ELA  
Chan 111

SAN ANTONIO  
116.8 SAT  
Chan 115  
N29°38.64'-W98°27.68'  
L-19, H-7

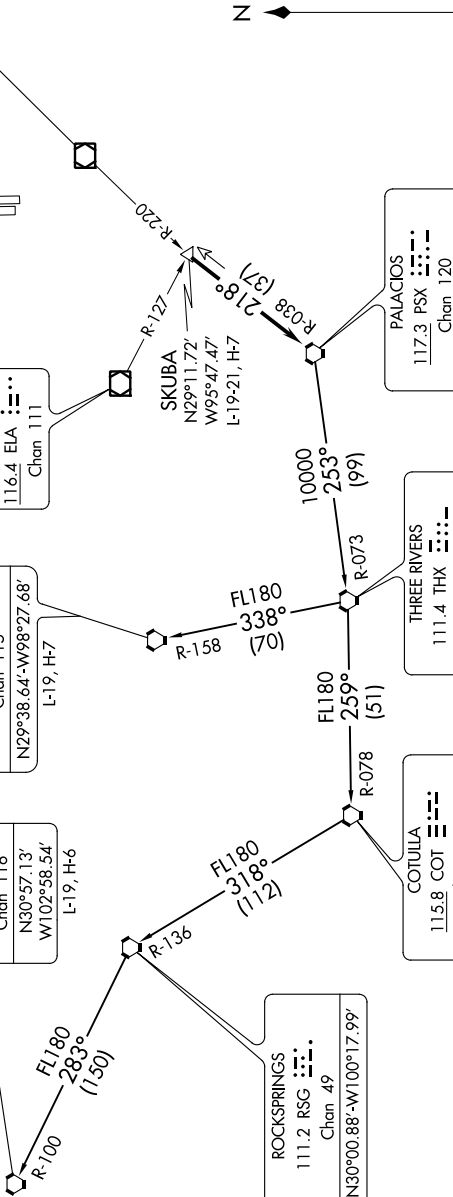
FORT STOCKTON  
116.9 FST  
Chan 116  
N30°57.13'  
W102°58.54'  
L-19, H-6

ROCKSPRINGS  
111.2 RSG  
Chan 49  
N30°00.88'-W100°17.99'

COTUILA  
115.8 COT  
Chan 105  
N28°27.72'-W99°07.11'

THREE RIVERS  
111.4 THX  
Chan 51  
N28°30.30'-W98°09.03'

PALACIOS  
117.3 PSX  
Chan 120  
N28°45.87'-W96°18.37'



(NARRATIVE ON FOLLOWING PAGE)

NOTE: RADAR required.  
NOTE: Chart not to scale

# PALACIOS NINE DEPARTURE