

LOC/DME I-HEW 110.5 Chan 42	APP CRS 168°	Rwy Idg TDZE 152 Apt Elev 152	6002
---	------------------------	---	-------------

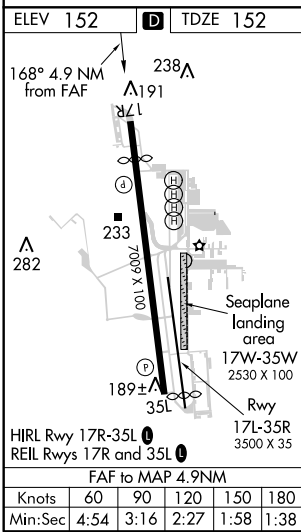
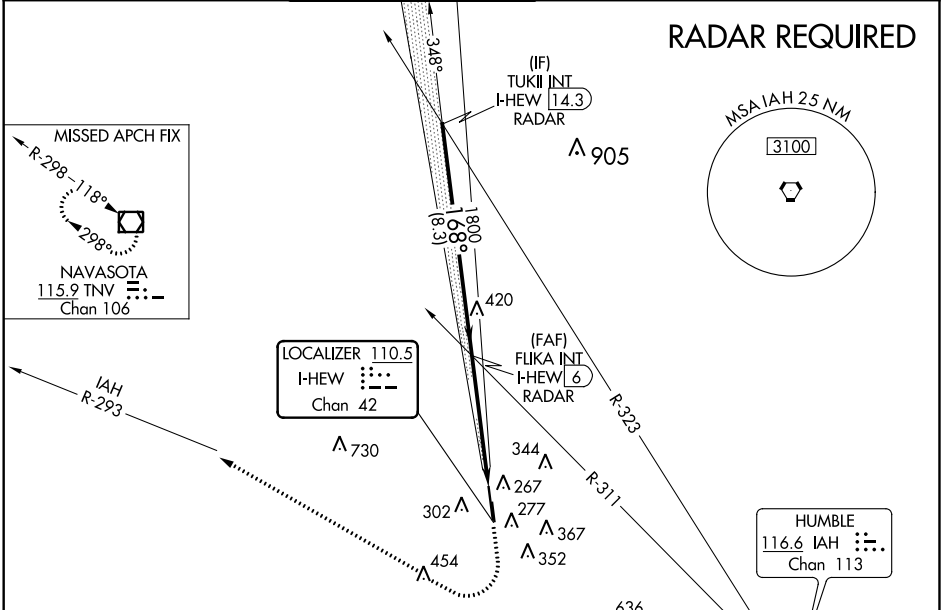
LOC RWY 17R

DAVID WAYNE HOOKS MEMORIAL (DWH)

NA When local altimeter setting not received, use George Bush Intercontinental/Houston altimeter setting and increase all MDA 40 feet; increase S-LOC 17R Cats C/D visibility 1/8 mile. Helicopter visibility reduction below 1 SM NA. Night landing: Rwy 35R NA.

MISSED APPROACH: Climb to 1200 then climbing right turn to 2000 on heading 325° and IAH VORTAC R-293 to TNV VOR/DME and hold.

ATIS 128.375	HOUSTON APP CON 119.7 281.4	HOOKS TOWER* 127.4 354.1 EAST 118.4 (CTAF) 354.1 WEST	GND CON 121.8 239.0	CLNC DEL 119.45	UNICOM 122.95
------------------------	---------------------------------------	---	-------------------------------	---------------------------	-------------------------



ELEV 152	D	TDZE 152
168° 4.9 NM from FAF	238 Δ	17R
233	7009 X 100	Seaplane landing area
189 \pm	35L	17W-35W 2530 X 100
35L		Rwy 17L-35R 3500 X 35
HIRL Rwy 17R-35L		FAF to MAP 4.9NM
REIL Rwys 17R and 35L		
Knots	60 90 120 150 180	
Min:Sec	4:54 3:16 2:27 1:58 1:38	

TUKII INT I-HEW 14.3 RADAR	1200	2000	IAH R-293	TNV
2000	168°	1800	Visual Segment - Obstacles.	
FLIKA INT I-HEW 6 RADAR			I-HEW 1.1	
8.3 NM		4.9 NM		

CATEGORY	A	B	C	D
S-LOC 17R	640-1	488 (500-1)	640-1 3/8	488 (500-1 3/8)
C CIRCLING	640-1	660-1	660-1 1/2	760-2
	488 (500-1)	508 (600-1)	508 (600-1 1/2)	608 (700-2)

SC-5, 26 APR 2018 to 24 MAY 2018

SC-5, 26 APR 2018 to 24 MAY 2018