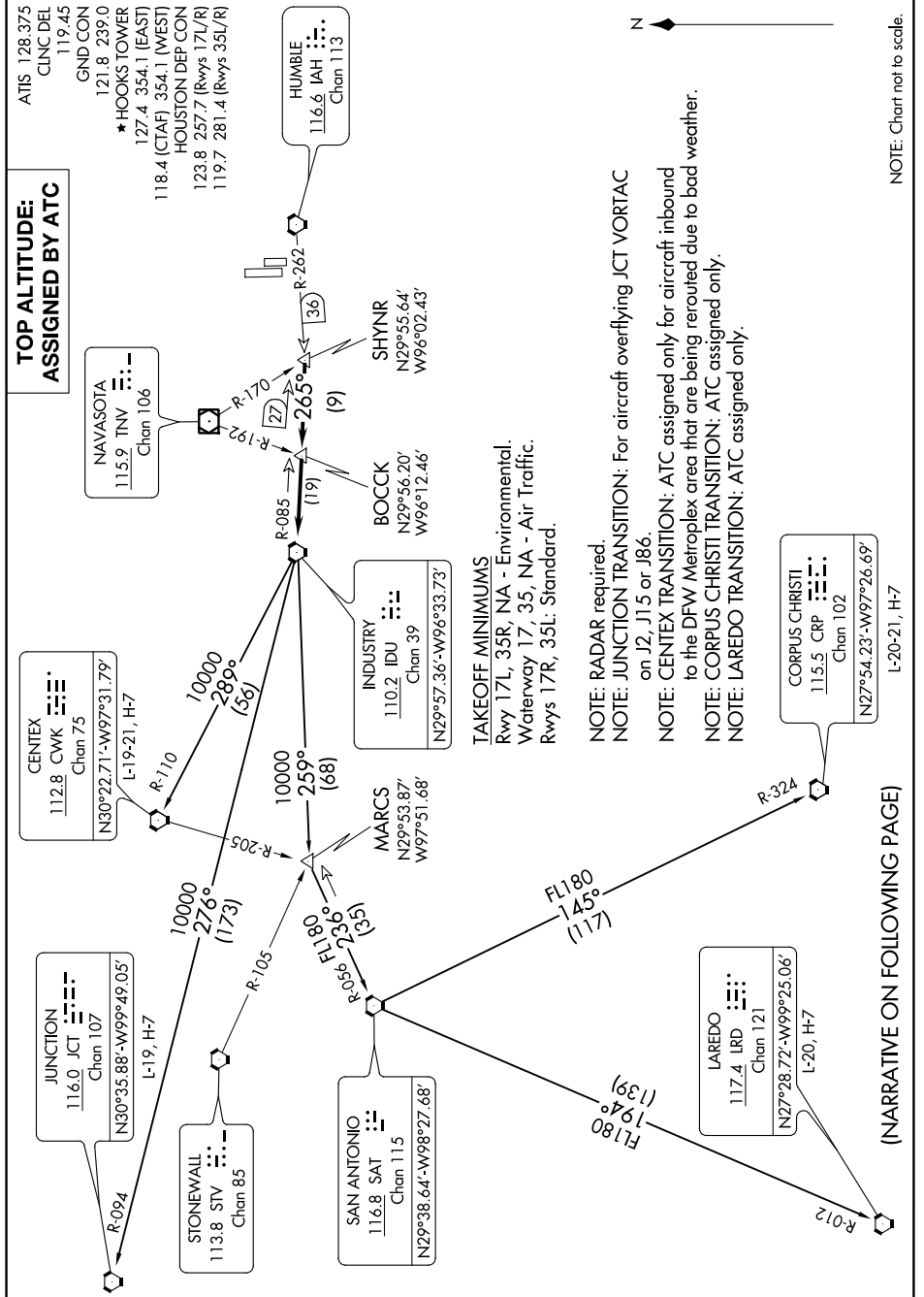


INDUSTRY NINE DEPARTURE

SC-5, 16 AUG 2018 to 13 SEP 2018



NOTE: Chart not to scale.

NOTE: RADAR required.
 NOTE: JUNCTION TRANSITION: For aircraft overflying JCT VORTAC on J2, J15 or J86.
 NOTE: CENTEX TRANSITION: ATC assigned only for aircraft inbound to the DFW Metroplex area that are being rerouted due to bad weather.
 NOTE: CORPUS CHRISTI TRANSITION: ATC assigned only.
 NOTE: LAREDO TRANSITION: ATC assigned only.

TAKEOFF MINIMUMS
 Rwy 17L, 35R, NA - Environmental.
 Waterway 17, 35, NA - Air Traffic.
 Rwys 17R, 35L - Standard.

(NARRATIVE ON FOLLOWING PAGE)

SC-5, 16 AUG 2018 to 13 SEP 2018

INDUSTRY NINE DEPARTURE