

EL DORADO NINE DEPARTURE

ATIS
128.375
CLNC DEL
119.45
GND CON
121.8 239.0
HOOKS TOWER★
127.4 354.1 (EAST)
118.4 (CTAF) 354.1 (WEST)
HOUSTON DEP CON
119.7 281.4

**TOP ALTITUDE:
ASSIGNED BY ATC**

EL DORADO
115.5 ELD
Chan 102
N33°15.37'-W92°44.64'
L-17, H-6

NOTE: RADAR required.
NOTE: For aircraft destined MEM
or filed via Q32 or J42.

LUFKIN
112.1 LFK
Chan 58

ENJOY
N31°16.73'
W94°19.82'

MUSIQ
N30°33.17'
W94°53.53'

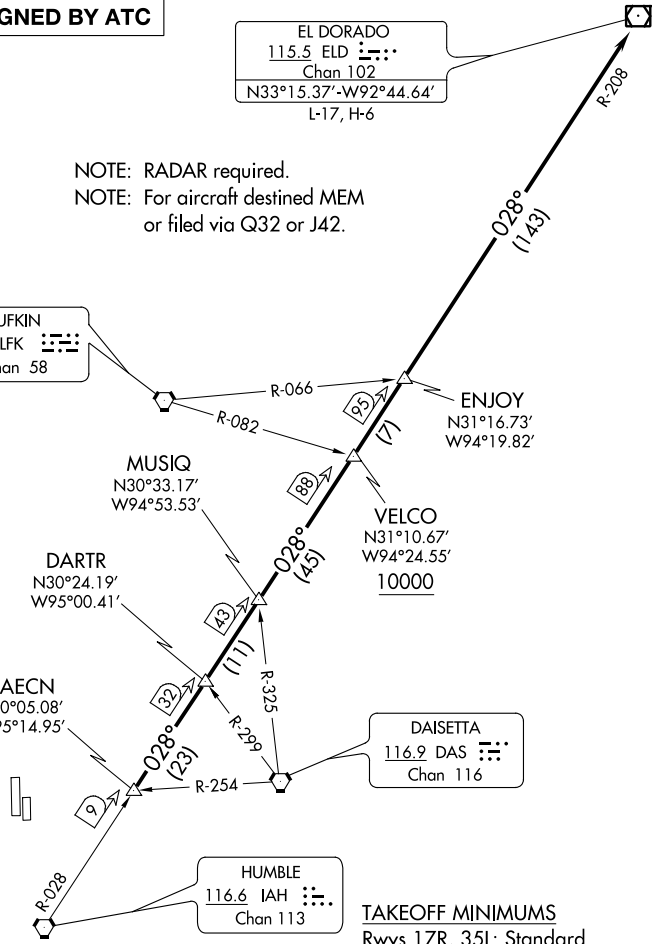
VELCO
N31°10.67'
W94°24.55'
10000

DARTR
N30°24.19'
W95°00.41'

RAECN
N30°05.08'
W95°14.95'

DAISETTA
116.9 DAS
Chan 116

HUMBLE
116.6 IAH
Chan 113



TAKEOFF MINIMUMS
Rwys 17R, 35L: Standard.
Rwys 17L, 35R: NA - Environmental.
Waterway 17, 35: NA - Air Traffic.

NOTE: Chart not to scale.

(NARRATIVE ON FOLLOWING PAGE)

DEPARTURE ROUTE DESCRIPTION

TAKEOFF ALL RWYS: When entering controlled airspace, climb on assigned heading for RADAR vectors to RAECN INT. Maintain ATC assigned altitude. Expect filed altitude 10 minutes after departure, thence. . . .

. . . .on IAH R-028 and the ELD R-208 to ELD VOR/DME, cross VELCO INT at or above 10000.

SC-5, 01 FEB 2018 to 01 MAR 2018

SC-5, 01 FEB 2018 to 01 MAR 2018