

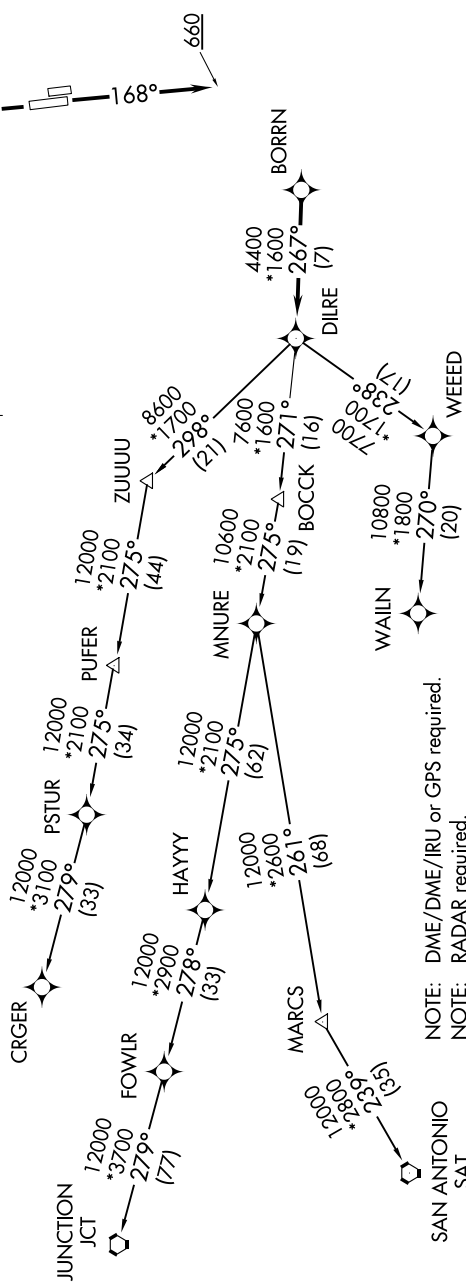
# BORRN THREE DEPARTURE (RNAV)

HOUSTON, TEXAS

**TOP ALTITUDE:  
ASSIGNED BY ATC**

**TAKEOFF MINIMUMS:**  
 Rwys 17L, 35R: NA - Environmental.  
 Waterway 17, 35: NA - Air Traffic.  
 Rwys 17R, 35L: Standard with minimum  
 climb of 500' per NM to 660.

ATIS 128.375  
 CINCDL 119.45  
 GND CON 121.8 239.0  
 HOOKS TOWER \* 127.4 354.1 (EAST)  
 118.4 (CTAF) 354.1 (WEST)  
 HOUSTON DEP CON 123.8 257.7 (Rwys 17L/R)  
 119.7 281.4 (Rwys 35L/R)



NOTE: DME/DME/IRU or GPS required.  
 NOTE: RADAR required.  
 NOTE: RNAV 1.  
 NOTE: CRGR TRANSITION ATC assigned only  
 for aircraft departing 54T, AXH, EFD, GLS,  
 HPY, IWS, LBX, LVJ, SGR, TME, T00, T41.

(NARRATIVE ON FOLLOWING PAGE)

NOTE: Chart not to scale.

SC-5, 01 FEB 2018 to 01 MAR 2018

SC-5, 01 FEB 2018 to 01 MAR 2018

# BORRN THREE DEPARTURE (RNAV)

(BORRN3.BORRN) 22JUN17

HOUSTON, TEXAS

DAVID WAYNE HOOKS MEMORIAL (DWH)