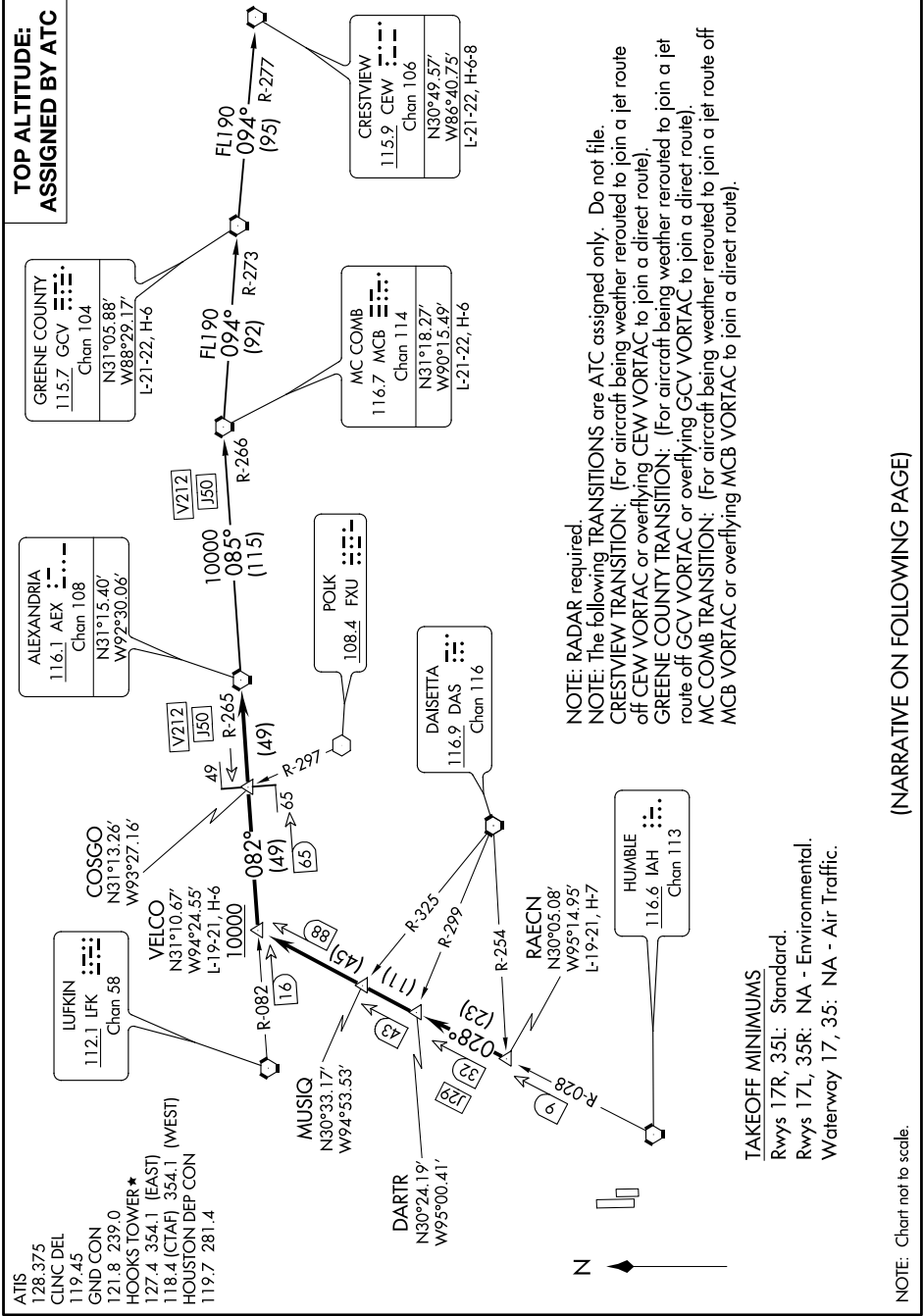


ALEXANDRIA ONE DEPARTURE

SC-5, 16 AUG 2018 to 13 SEP 2018



(NARRATIVE ON FOLLOWING PAGE)

SC-5, 16 AUG 2018 to 13 SEP 2018

ALEXANDRIA ONE DEPARTURE

NOTE: RADAR required.
NOTE: The following TRANSITIONS are ATC assigned only. Do not file.
CRESTVIEW TRANSITION: (For aircraft being weather routed to join a jet route off CEW VORTAC or overflying CEW VORTAC to join a direct route).
GREENE COUNTY TRANSITION: (For aircraft being weather routed to join a jet route off GCV VORTAC or overflying GCV VORTAC to join a direct route).
MC COMB TRANSITION: (For aircraft being weather routed to join a jet route off MCB VORTAC or overflying MCB VORTAC to join a direct route).

TAKEOFF MINIMUMS
 Rwy 17R, 35L: Standard.
 Rwy 17L, 35R: NA - Environmental.
 Waterway 17, 35: NA - Air Traffic.

NOTE: Chart not to scale.