

AIRPORT DIAGRAM

AL-928 (FAA)

EASTERWOOD FLD (CLL)
COLLEGE STATION, TEXAS

ATIS 126.85
 EASTERWOOD TOWER* 118.5 284.7
 GND CON 128.7 284.7
 CLNC DEL 128.7
 120.4 (When Tower Closed)

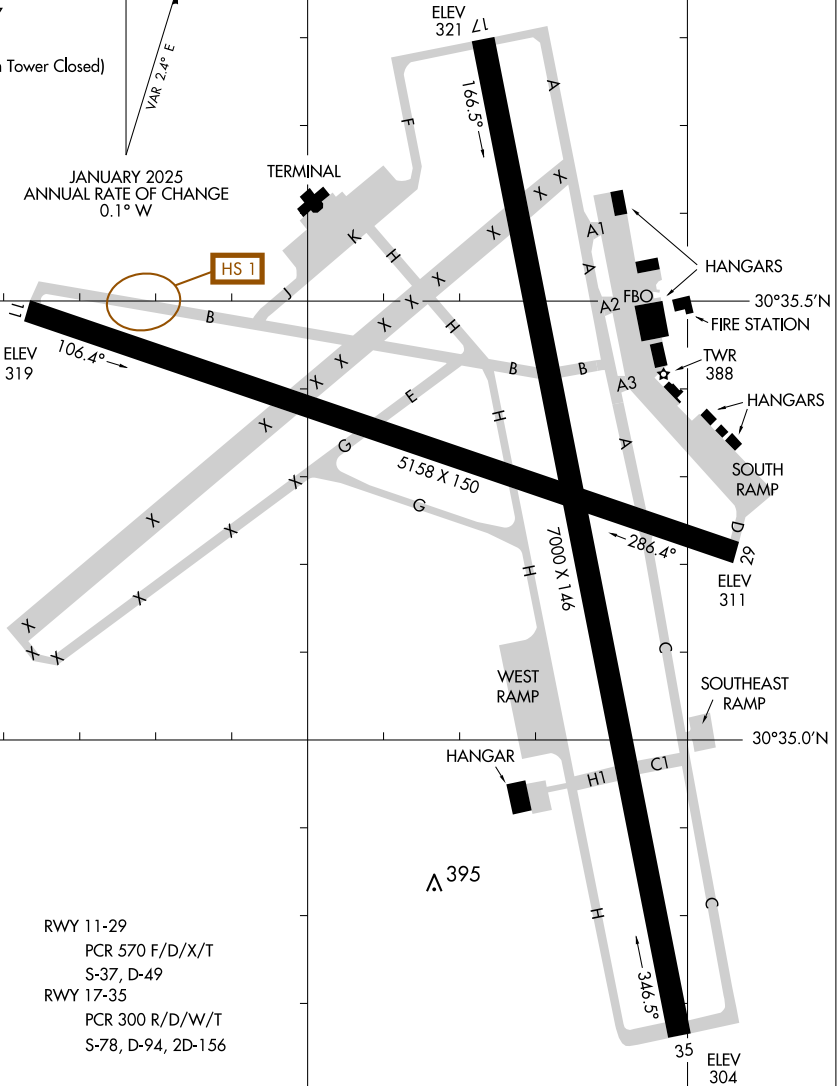


VAR 2.4° E

JANUARY 2025
 ANNUAL RATE OF CHANGE
 0.1° W

HS 1

FIELD
 ELEV
 321



RWY 11-29
 PCR 570 F/D/X/T
 S-37, D-49
 RWY 17-35
 PCR 300 R/D/W/T
 S-78, D-94, 2D-156

CAUTION: BE ALERT TO RUNWAY CROSSING CLEARANCES.
 READBACK OF ALL RUNWAY HOLDING INSTRUCTIONS IS REQUIRED.

SC-5, 15 MAY 2025 to 12 JUN 2025

SC-5, 15 MAY 2025 to 12 JUN 2025

96°22.5'W

96°22.0'W

96°21.5'W

30°34.5'N

30°35.0'N

30°35.5'N

AIRPORT DIAGRAM

COLLEGE STATION, TEXAS
EASTERWOOD FLD (CLL)