


LOC I-UTA <b>110.95</b> Chan <b>46 (Y)</b>	APP CRS <b>347°</b>	Rwy Idg <b>8500</b> TDZE <b>194</b> Apt Elev <b>194</b>
--------------------------------------------------	------------------------	---------------------------------------------------------------

# ILS or LOC RWY 35

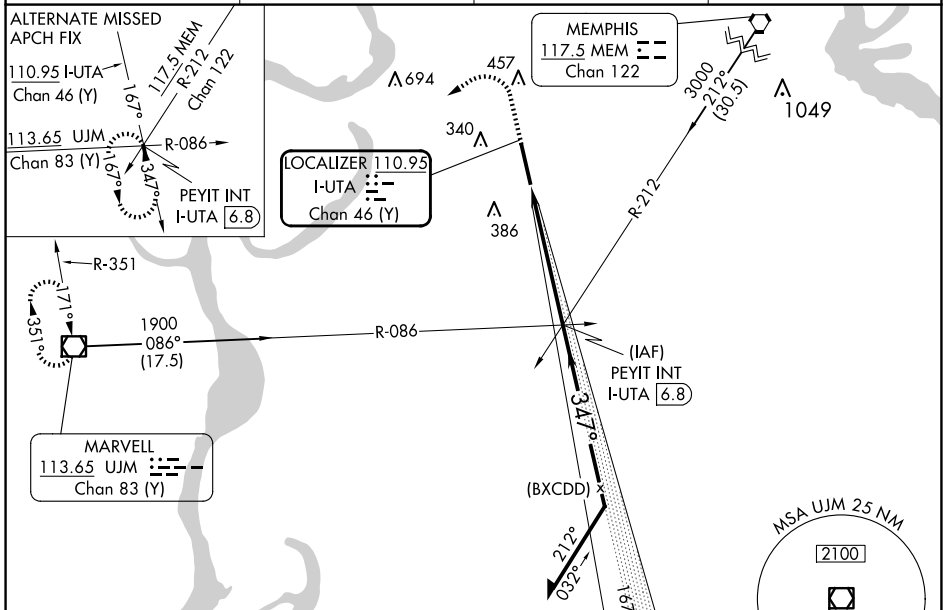
TUNICA MUNI (UTA)

VDP NA with Memphis altimeter setting. When local altimeter not received, use Memphis altimeter setting and increase S-ILS 35 DA to 480 and all MDA 100 feet, increase S-LOC 35 Cats C and D and Circling Cat C visibility 1/4 mile. For inoperative MALSR when using Memphis altimeter setting increase S-ILS 35 all Cats visibility to 1 mile.

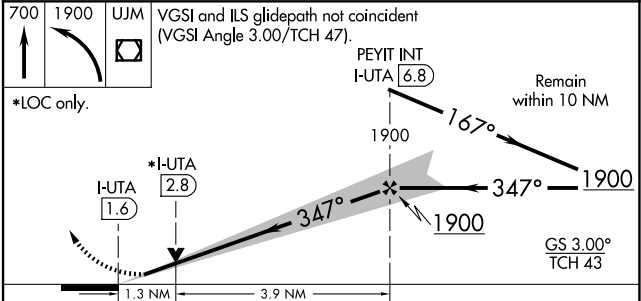
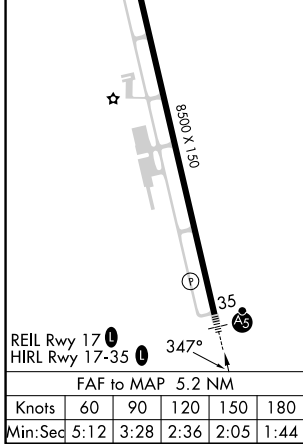
MALSR 

MISSED APPROACH: Climb to 700 then climbing left turn to 1900 direct UJM VOR/DME and hold.

AWOS-3 <b>118.075</b>	MEMPHIS APP CON <b>119.1 291.6</b>	CLNC DEL <b>118.9</b>	UNICOM <b>123.0 (CTAF)</b> 
--------------------------	---------------------------------------	--------------------------	-----------------------------------------------------------------------------------------------------------------



ELEV <b>194</b>	TDZE <b>194</b>
-----------------	-----------------



CATEGORY	A	B	C	D
S-ILS 35		394-1/2	200 (200-1/2)	
S-LOC 35	640-1/2	446 (500-1/2)	640-7/8	446 (500-7/8)
CIRCLING	680-1 486 (500-1)	740-1 546 (600-1)	760-1/2 566 (600-1/2)	760-2 566 (600-2)

SC-4, 15 MAY 2025 to 12 JUN 2025

SC-4, 15 MAY 2025 to 12 JUN 2025