

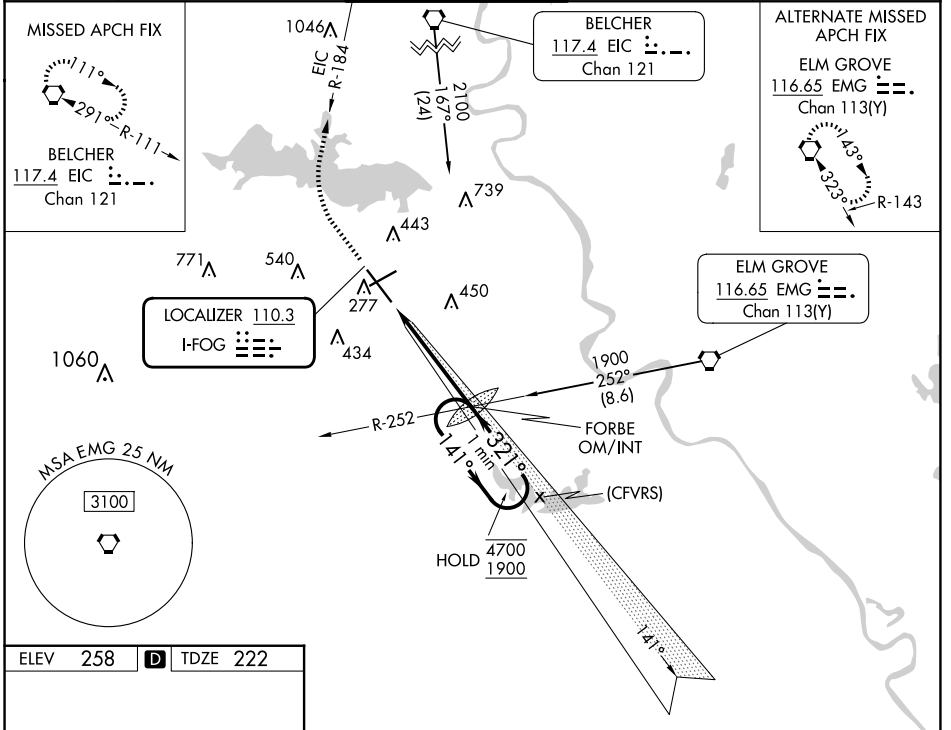
LOC I-FOG <b>110.3</b>	APP CRS <b>321°</b>	Rwy Idg <b>7975</b> TDZE <b>222</b> Apt Elev <b>258</b>
---------------------------	------------------------	--

# ILS or LOC RWY 32

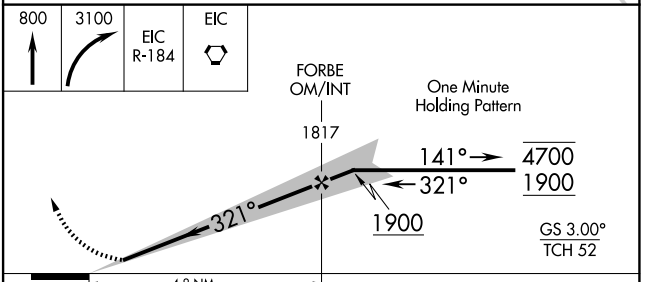
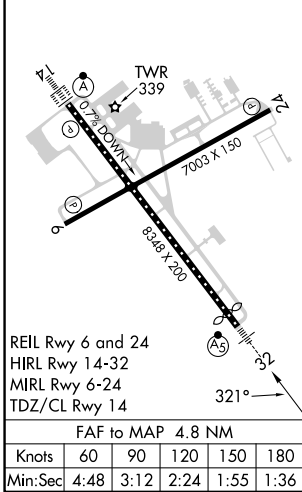
SHREVEPORT RGNL (SHV)

<p><b>▼</b> Rwy 32 helicopter visibility reduction below RVR 4000 NA. Inop table does not apply to S-ILS 32 all Cats. For inop ALS, increase S-LOC 32 Cat A and B visibility to RVR 5500 and Cat C and D visibility to 1<math>\frac{1}{2}</math> SM.</p>	<p><b>MALSR</b> </p>	<p><b>MISSED APPROACH:</b> Climb to 800 then climbing right turn to 3100 on EIC VORTAC R-184 to EIC VORTAC and hold.</p>
--	--------------------------	--

ATIS <b>128.45</b>	SHREVEPORT APP CON <b>119.9 335.55</b>	SHREVEPORT TOWER <b>121.4 236.775</b>	GND CON <b>121.175 236.775</b>	CLNC DEL <b>124.65</b>
-----------------------	---	--	-----------------------------------	---------------------------



ELEV 258	<b>D</b>	TDZE 222
----------	----------	----------



CATEGORY	A	B	C	D
S-ILS 32	422/40 200 (200- $\frac{3}{4}$ )			
S-LOC 32	720/40	498 (500- $\frac{3}{4}$ )	720/50	498 (500-1)
<b>CIRCLING</b>	760-1	502 (600-1)	980-2 722 (800-2)	1100-2 $\frac{3}{4}$ 842 (900-2 $\frac{3}{4}$ )

SC-4, 15 MAY 2025 to 12 JUN 2025

SC-4, 15 MAY 2025 to 12 JUN 2025