

WAAS CH <b>45704</b> W13A	APP CRS <b>135°</b>	Rwy Idg <b>5513</b> TDZE <b>238</b> Apt Elev <b>238</b>
---------------------------------	------------------------	---

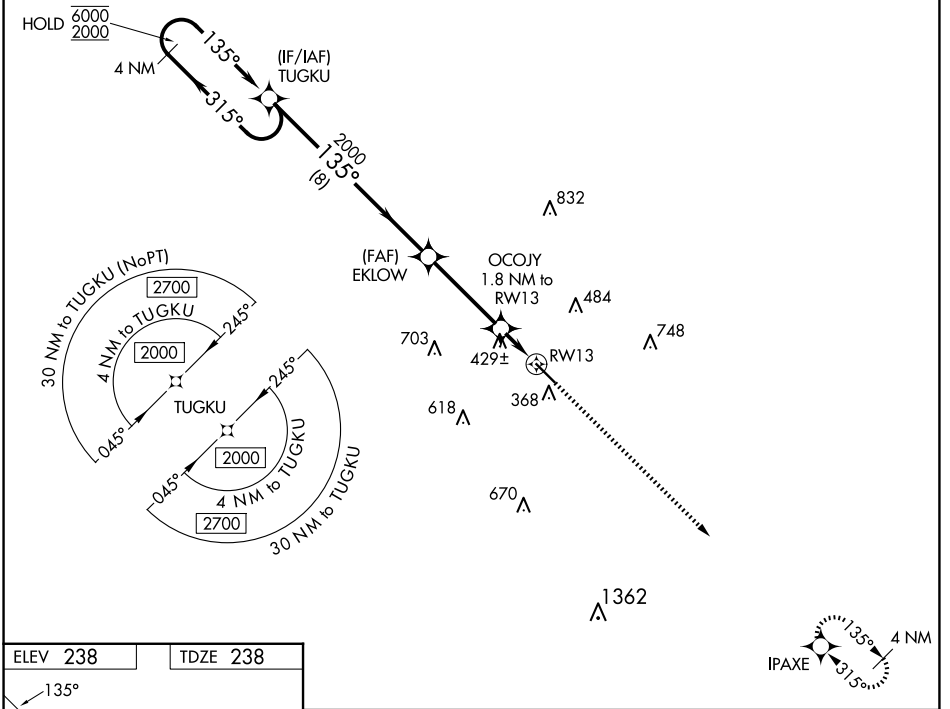
# RNAV (GPS) RWY 13

HESLER/NOBLE FLD (LUL)

RNP APCH. MISSED APPROACH: Climb to 2000 direct IPAXE and hold.

▼ For uncompensated Baro-VNAV systems, LNAV/VNAV NA below -15°C or above 54°C.

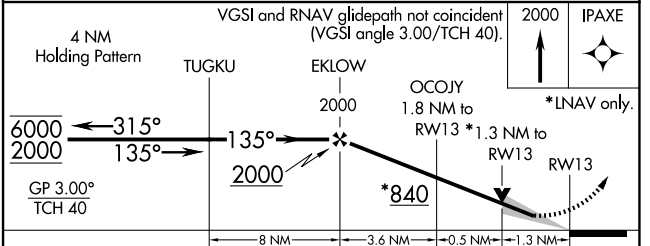
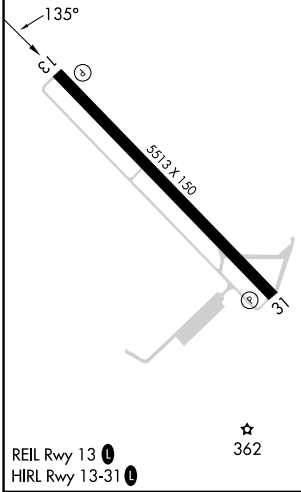
AWOS-3PT <b>119.275</b>	HOUSTON CENTER <b>126.8 327.8</b>	UNICOM <b>123.05 (CTAF) 0</b>
----------------------------	--------------------------------------	----------------------------------



SC-4, 15 MAY 2025 to 12 JUN 2025

SC-4, 15 MAY 2025 to 12 JUN 2025

ELEV 238	TDZE 238
----------	----------



CATEGORY	A	B	C	D
LPV DA	488-1		250 (300-1)	
LNAV/VNAV DA	759-1¾		521 (600-1¾)	
LNAV MDA	680-1	442 (500-1)	680-1¾ 442 (500-1¾)	680-2 442 (500-2)
CIRCLING	700-1 462 (500-1)	800-1 562 (600-1)	1040-2¼ 802 (900-2¼)	1060-2¾ 822 (900-2¾)