

| | | | |
|--|------------------------|-----------------------------|---|
| VORTAC MHZ 113.2 Chan 79 | APP CRS 349° | Rwy Idg TDZE Apt Elev | 8500 346 346 |
|--|------------------------|-----------------------------|---|

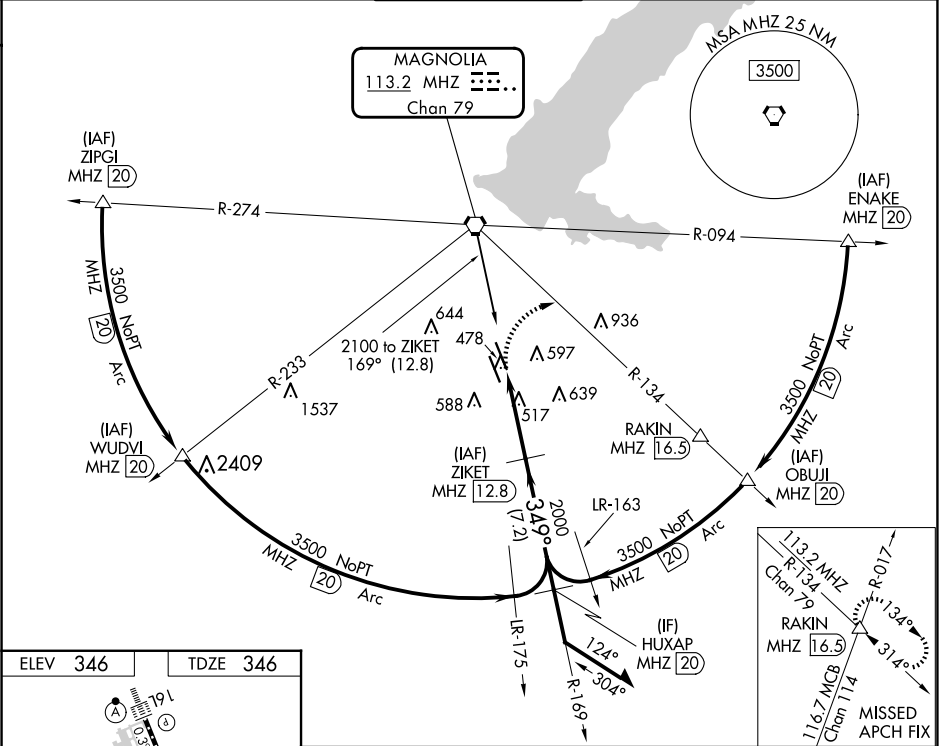
VOR/DME or TACAN RWY 34R

JACKSON-MEDGAR WILEY EVERS INTL (JAN)

⚠ When local altimeter setting not received, use Hawkins fld altimeter setting and increase all MDA 20 feet; increase S-34R Cats C/D/E visibility 1/8 mile. Circling NA for Cat E southwest of Rwy 16R-34L. Helicopter visibility reduction below 3/4 SM NA.

MISSED APPROACH: Climbing right turn to 3000 on heading 120° and MHz VORTAC R-134 to RAKIN INT/ MHz 16.5 DME and hold.

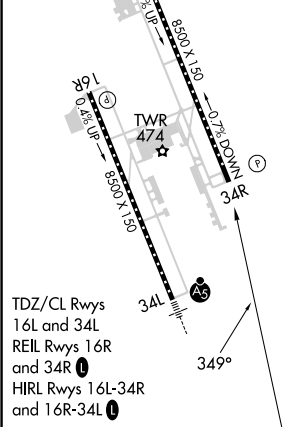
| | | | | |
|-----------------------|--|---|-------------------------------|-------------------------|
| ATIS 121.05 | JACKSON APP CON* 123.9 317.7 | JACKSON TOWER* 120.9 (CTAF) 352.0 | GND CON 121.7 348.6 | UNICOM 122.95 |
|-----------------------|--|---|-------------------------------|-------------------------|



SC-4, 15 MAY 2025 to 12 JUN 2025

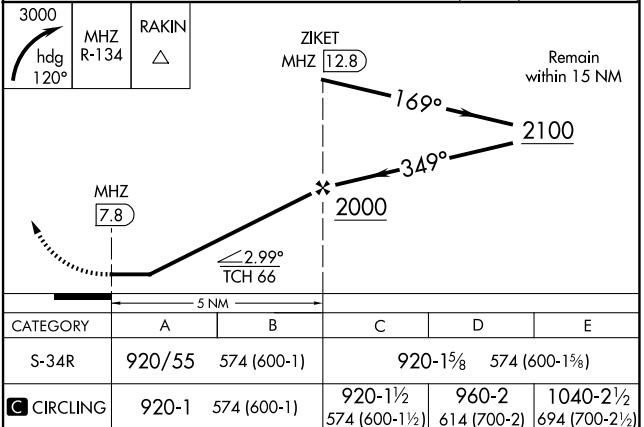
SC-4, 15 MAY 2025 to 12 JUN 2025

| | |
|----------|----------|
| ELEV 346 | TDZE 346 |
|----------|----------|



JACKSON, MISSISSIPPI
Orig-B 17SEP15

32°19'N-90°05'W



JACKSON-MEDGAR WILEY EVERS INTL (JAN)

VOR/DME or TACAN RWY 34R