

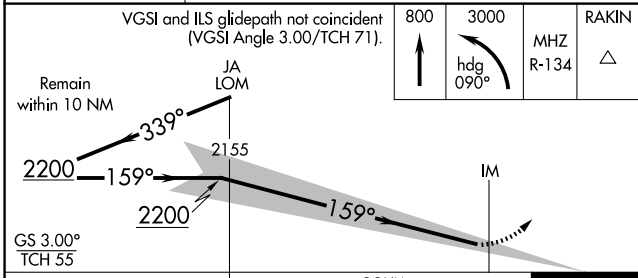
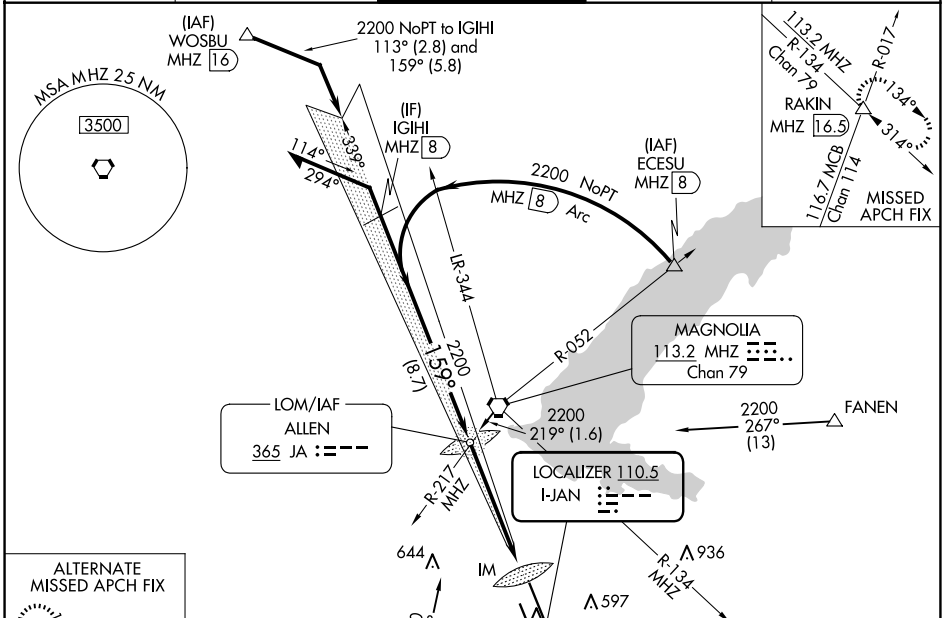
LOC I-JAN 110.5	APP CRS 159°	Rwy Idg 8500
		TDZE 312
		Apt Elev 346

ILS RWY 16L (SA CAT I)

JACKSON-MEDGAR WILEY EVERS INTL (JAN)

Requires specific OPSPEC, MSPEC, or LOA approval and use of HUD to DA. When control tower closed, procedure NA. When local altimeter setting not received, procedure NA.	ALSIF-2 	MISSED APPROACH: Climb to 800 then climbing left turn to 3000 on heading 090° and MHZ VORTAC R-134 to RAKIN INT/MHZ 16.5 DME and hold.
--	-------------	--

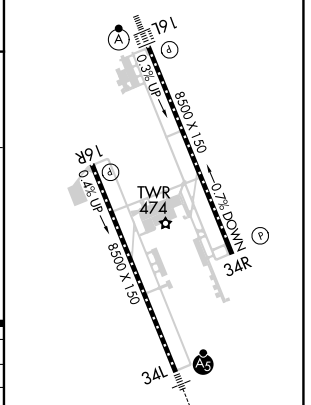
ATIS 121.05	JACKSON APP CON* 123.9 317.7	JACKSON TOWER* 120.9 (CTAF) 0 352.0	GND CON 121.7 348.6	UNICOM 122.95
-----------------------	--	---	-------------------------------	-------------------------



CATEGORY	A	B	C	D
S-ILS 16L	RA 169/14 150 DA 462			

SA CATEGORY I ILS - SPECIAL AIRCREW & AIRCRAFT CERTIFICATION REQUIRED

ELEV 346	TDZE 312
----------	----------



TDZ/CL Rwys 16L and 34L
 REIL Rws 16R and 34R
 HIRL Rws 16L-34R and 16R-34L

SC-4, 15 MAY 2025 to 12 JUN 2025

SC-4, 15 MAY 2025 to 12 JUN 2025