

| | | |
|---------------------------|------------------------|------------------------|
| LOC I-JAN 110.5 | APP CRS 159° | Rwy Idg 8500 |
| | | TDZE 312 |
| | | Apt Elev 346 |

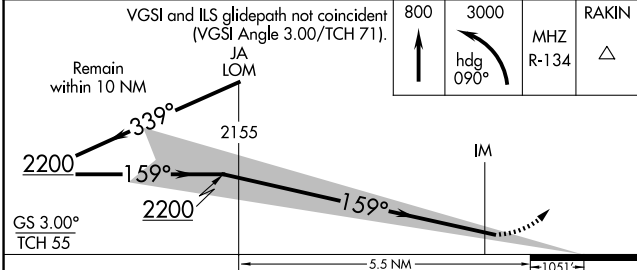
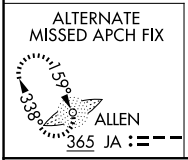
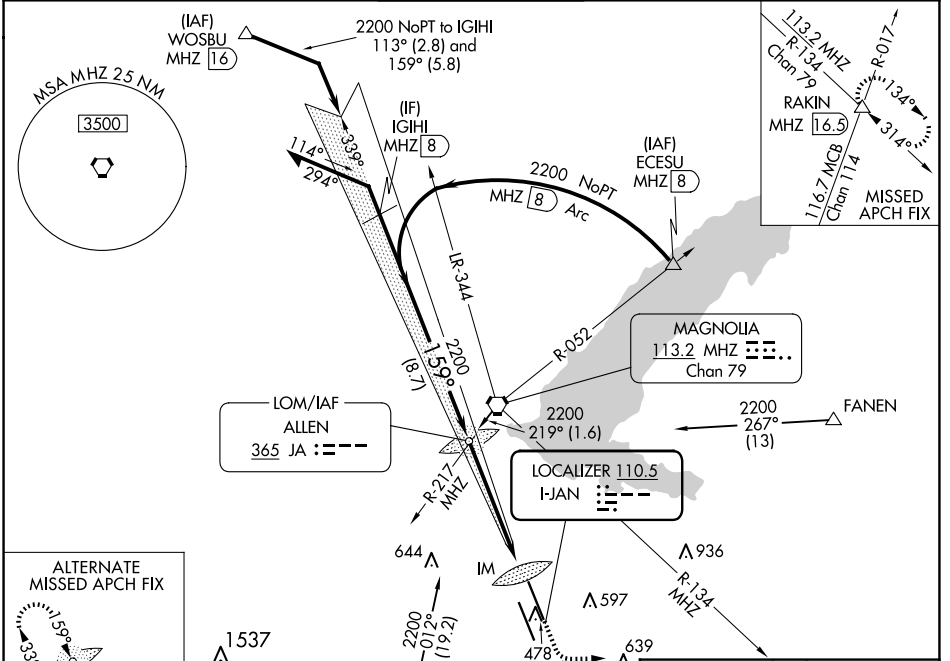
ILS RWY 16L (CAT II & III)

JACKSON-MEDGAR WILEY EVERS INTL (JAN)

ALSF-2 MISSED APPROACH: Climb to 800 then climbing left turn to 3000 on heading 090° and MHz VORTAC R-134 to RAKIN INT/MHZ 16.5 DME and hold.

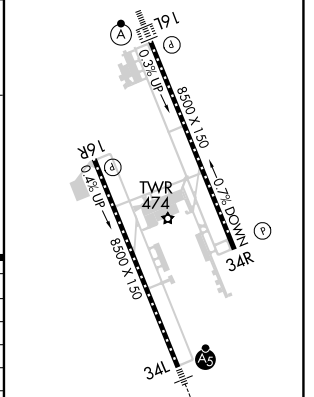
ASR When control tower closed, procedure NA.
When local altimeter setting not received, procedure NA.

| | | | | |
|-----------------------|---|--|-------------------------------|-------------------------|
| ATIS 121.05 | JACKSON APP CON * 123.9 317.7 | JACKSON TOWER * 120.9 (CTAF) 0 352.0 | GND CON 121.7 348.6 | UNICOM 122.95 |
|-----------------------|---|--|-------------------------------|-------------------------|



| CATEGORY | A | B | C | D |
|-----------|---|-----------------------------|---|---|
| S-ILS 16L | | CAT II RA 119/12 100 DA 412 | | |
| S-ILS 16L | | CAT IIIA RVR 07 | | |
| S-ILS 16L | | CAT IIIB RVR 06 | | |
| S-ILS 16L | | CAT IIIC NA | | |

| | |
|----------|----------|
| ELEV 346 | TDZE 312 |
|----------|----------|



CATEGORY II & III ILS - SPECIAL AIRCREW & AIRCRAFT CERTIFICATION REQUIRED

TDZ/CL Rws 16L and 34L
REIL Rws 16R and 34R
HIRL Rws 16L-34R and 16R-34L

SC-4, 15 MAY 2025 to 12 JUN 2025

SC-4, 15 MAY 2025 to 12 JUN 2025