

WAAS CH 99413 W18A	APP CRS 179°	Rwy Idg 6413 TDZE 8 Apt Elev 9
--	------------------------	---

RNAV (GPS) RWY 18

HOUMA-TERREBONNE (HUM)

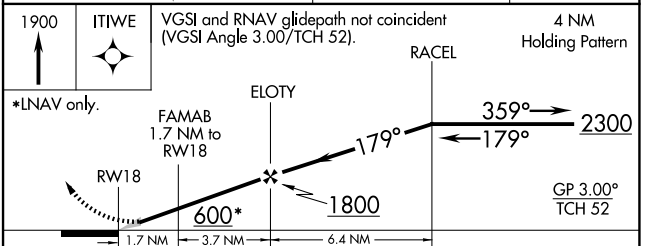
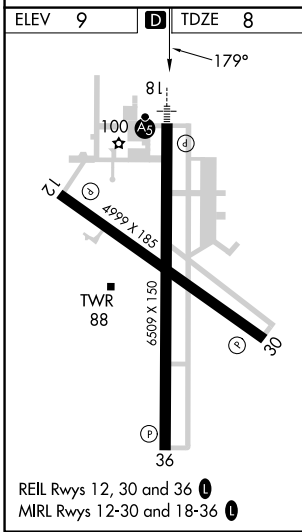
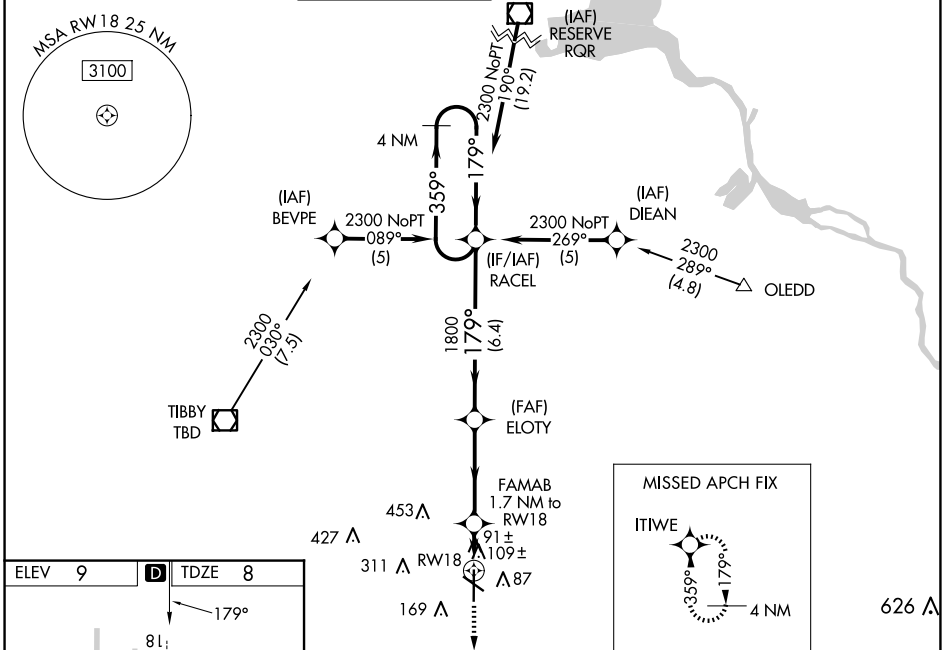
⚠ Baro-VNAV NA when using Louis Armstrong New Orleans Intl altimeter setting. For uncompensated Baro-VNAV systems, LNAV/VNAV NA below -15°C (5°F) or above 49°C (120°F). DME/DME RNP-0.3 NA. When local altimeter setting not received, use Louis Armstrong New Orleans Intl altimeter setting: increase LPV DA to 285, increase LNAV/VNAV DA to 526 and all visibilities 1/8 SM; increase all MDAs 80 feet and visibility Cats C and D 1/4 SM. For inop ALS when using Louis Armstrong New Orleans Intl altimeter setting increase all LPV visibilities to 7/8 SM, increase all LNAV/VNAV visibilities and LNAV Cats C and D visibility to 1 1/8 SM.

MALSR



MISSED APPROACH:
Climb to 1900 direct ITIWE and hold.

ATIS 120.25	NEW ORLEANS APP CON 118.9 350.35	HOUMA TOWER ★ 125.3 (CTAF) 346.3	GND CON 123.875	CLNC DEL 118.9 (When twr closed)	UNICOM 122.95
-----------------------	--	--	---------------------------	---	-------------------------



CATEGORY	A	B	C	D
LPV DA		208-1/2	200 (200-1/2)	
LNAV/VNAV DA		449-7/8	441 (500-7/8)	
LNAV MDA	440-1/2	432 (500-1/2)	440-3/4	432 (500-3/4)
C CIRCLING	480-1	471 (500-1)	760-2/4 751 (800-2/4)	760-2/2 751 (800-2/2)